



# The Clarion



6th Edition

Tuesday, December 9, 1980

Page 1

## Is It Worth It?

by Toni Powell

On November 11th, a college student was caught shoplifting in Belk's department store in Brevard. The store policy requires prosecution of shoplifters.

What happens to a 18-19 year old person when they are prosecuted? First they are taken to the police department and fingerprinted. They will be put in jail on bond until someone can pay it. Then the person will have to go to court, paying for the court charges, and then the court decides if the person will go to

prison or not.

This affects the future as well as the present. It is hard to find employment with shoplifting charges on your permanent record. If you decide to continue your education, there will be difficulty getting enrolled into another school.

Shoplifting is just a simple word for stealing and stealing is a serious crime. So next time you decide to shoplift, stop and ask yourself, "Is it worth it?" Do you want something like this to affect you the rest of your life?

## A Traditional Christmas

by Missi Ellison

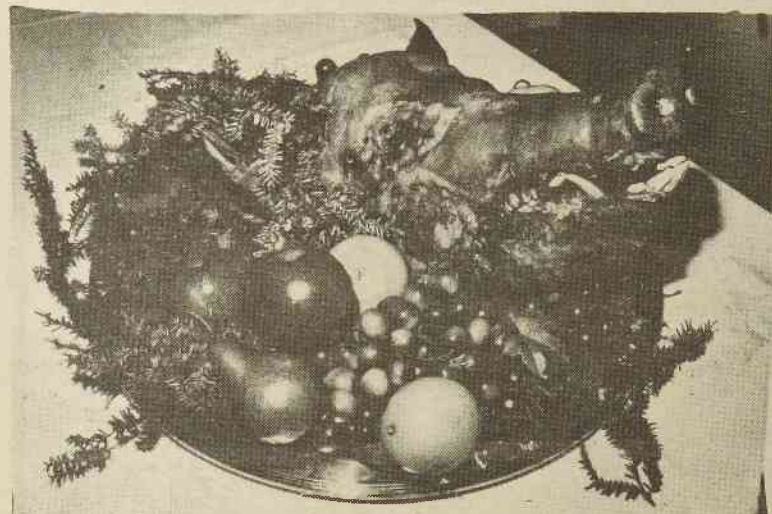
Each year, the Yule Feast is presented by the combined efforts of Brevard College and the First United Methodist Church. Students, teachers, and people within the Church all participate in this celebration of Christmas.

The Yule Feast is based upon a medieval Christmas celebration. The meal, which includes a real boar's head, wassail, and a flaming pudding plus a variety of other traditional dishes, is very popular — especially since it is accompanied by traditionally dressed Chamber Choir members who sing during the meal much the same way that minstrels did. There are even royal banners sewn in the authentic colors and patterns.

The Chamber Choir has been practicing all this semester for

the Yule Feast. Performing in various musical mides from madrigals to Gregorian chants, the Chamber Choir also subdivides into smaller groups to perform other selections. They are dressed in long, ornately decorated velvet dresses for the women and traditional tights for the men and present not only a fine sight for the audience but an admirably professional performance.

Other high points in the sold-out three-night spectacle will be traditional dances, performances on flutes, harpsichords, pianos, recorders, and other instruments, and even an appearance by the Queen (who might look hauntingly familiar to some students here on campus). If you got tickets for the Yule Feast, count your blessings; if not, buy some as soon as possible for next year's presentation.



A feast fit for a Queen is not complete without the traditional Boar's Head.



Eddie Pagan was a member of the team originally declared ineligible.

## Tornados Ruled Eligible Too Late

by Tommy Pennell

On November 24, the Brevard Tornados were ruled eligible to play in the National Tournament at Jacksonville but the soccer tournament had been completed. However, the team will not have to forfeit any of their games since the player in question has been ruled eligible.

However, the Tornados were allowed to play North Dade in a so-called scrimmage which the Tornados lost, 1-0.

When the Tornados journeyed to Jacksonville to play North Dade in the regional playoffs, the NJCAA ruled a player on the team ineligible before the game.

The Tornados final overall

record was 12-6-1. Coach Don Scarborough says he "expects next season's team to be an improvement over this year's." The key to this will be the return of 18 players. Another important note is the recruiting, Coach Scarborough stated that "we have around 200 players interested in the Brevard program."

## Our President-elect Ronald Reagan

by Richy Haymaker

As President-elect Ronald Reagan shortly takes his seat in the White House, many new problems arise with his plans and how they will work in future years.

He plans to cut personal and corporate taxes, increase defense spending and reduce federal spending. If one were to look realistically at his proposals, one might see that he is really taking from one source and adding to another.

According to Reagan's earlier campaign speeches, he plans to increase defense spending moderately through federal taxes. This alone will increase tax payments in future years.

Reagan says he will decrease federal spending, which will result in federal tax cuts. This is where increases in defense spending will alter the federal tax plan, leveling the overall balance. Only personal tax cuts will allow the overall balance to

be reduced.

In dealing with the economy though, an overall study conducted to determine the difference in unemployment and stock levels while Republican and Democratic parties have been in office shows unemployment has been down while the stock market rose during a Republican administration.

Maybe President-elect Ronald Reagan can pull the nation together again.