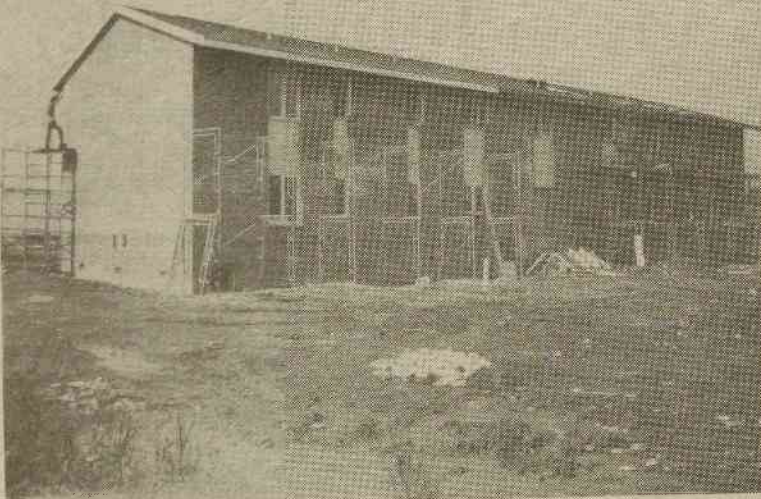


New Multi- Purposed Campus Complex Nearly Finished

The first unit in a proposed four-unit, multi-purpose apartment complex located adjacent to the faculty duplexes behind the track is nearly complete after three months of construction. Scheduled for completion on August 10, the unit is approximately 20 days behind schedule, a delay which resulted primarily because of heavy rains during the early days of construction. Residents should be able to occupy the building during the first or second week of September. The College has arranged for the twenty four students assigned to the New Complex to be housed in the Brevard Motor Lodge until the apartments are complete.

The present unit contains four apartments, and each will house six students. In each apartment are three bedrooms, two baths, and a multi-purpose area containing a kitchen, along with dining and lounge areas. The apartments will be furnished with furniture selected especially for student appeal. Washing machines and telephones will be provided.

Brevard first considered constructing a traditional residence hall to be connected to the back of



The new multi-purpose apartment complex features four apartments, each capable for housing six students.

Green Hall, and the architect's model was presented to the Board of Trustees with the recommendation that the College go the apartment route instead. Administrators feel that the apartments will have greater student appeal than a traditional residence hall, and, significantly, the same number of students can

be housed for approximately one-third as much. A residence hall for 100 students would have cost the College approximately 3 million dollars. Except for inflation, the same number of students can be housed in the New Complex for approximately 1 million. The cost of the present unit is approximately \$250,000.

There are other advantages as well. By building one unit at a time, the Office of Admissions does not face the burden of increasing enrollment by 100 students in one academic year; rather, growth can take place gradually, and this is considered to be more healthy. Furthermore, should changing demographic patterns result in a smaller enrollment, these apartments will have been constructed in such a way that they are suitable for family housing.

The need for major renovation to Ross Hall was a major factor in the minds of the trustees as they authorized this construction. Cosmetic improvements have not been made because major work is needed, and this will require that the building be vacated during the period of renovation. Along the way, the New Complex will "give us the flexibility to maintain current enrollment, and, at the same time, perform the necessary repairs on Ross," stated Frank Davis, Executive Director for Development at Brevard College.



Special
Edition

The Clarion

Sunday, August 22, 1982

Volume 50

Brevard College

Brevard, North Carolina

Number 1

Week-long Activities Inaugurate Fall Semester

By Jon Zillioux

Everything from dancing to pool parties to a Derby Day has been planned by the Social Board, an agency of the Brevard College Student Government Association, to inaugurate the 1982-83 social year.

Social aspects commence with a banana split party in the dining hall at 8 p.m. tonight (Sunday), following the first general session in Dunham Auditorium.

Immediately following the ice cream social is the showing of Warner Brothers' 1979 hit comedy *The Main Event*, starring Barbra Stresand and Ryan O'Neal. The movie begins at 10 p.m. in The Cellar (SU). It may be crowded, but don't worry. The film will be shown later this week.

Following tomorrow's orientation session in Dunham Auditorium, hit the pool. The pool party begins at 3 p.m. so bring your swim wear and get ready for a good time.

The pool party ends at six to give everyone a chance to dry off, eat dinner, and prepare themselves for the night's DJ Dance. Current Top-40 and some oldies will be aired, beginning at 9 p.m. in the gymnasium.

And if it's anything like it was last year, it's not worth missing! According to Mr. Rick Hinshaw, Associate Dean of Admissions, this dance will be presented in a "very, very professional" manner with a "complete variety of music." Mr. Hinshaw notes that DJ Chuck Miller has a top quality

sound system and a light display that's so good that *Billboard Magazine* featured his act in 1979.

Tuesday night, get set for some "Magic," a six-member band hailing from Charlotte, North Carolina. Their repertoire includes music from AC/DC, Eric Clapton, The Commodores, Foreigner, REO Speedwagon, .38 Special, Styx, Journey, Loverboy, and Lynard Skynard.

"Magic," consisting of a four-piece rhythm section, trumpet and saxophone, will start "jamming" at 9 p.m. in the gymnasium.

And in case you don't feel like dancing, *The Main Event* will be shown again Tuesday night in The Cellar, beginning at 9 p.m.

Next in line is the year's first coffee house featuring "Hot Shandy," a two-man string group from Gainesville, Florida. They will be playing "acoustic music from Ireland and America" in The Cellar (SU), beginning at 9 p.m. Wednesday and Thursday nights.

Get dressed up for dinner Wednesday evening (5:30 - 7:30). It's something special — a "night out" right on campus. There will be a special meal, and, what's more, if a panel of faculty judges considers you "dressed-up," you will receive a special treat. Moreover, those judged by the faculty panel to be "dressed-up" will be entered into a lottery, with a \$25 prize going to the lucky man and lucky woman.

The third dance of this social week is a disco in The Cellar from 9 p.m. to 1 a.m. Saturday.

Wrapping up this week's social



"Magic," a six member band from Charlotte, N.C. will be playing all the latest hits Tuesday night at 9 P.M. in the Boshamer Gymnasium.

activities is Derby Day which begins with a picnic at 12 noon on Saturday on the mall. Following the tossing of the derby will be the traditional — and very popular — BC Derby Day com-

petition which many returning sophomores consider to be the most exciting of all the events for this week.

The week's not over yet. The

1980 Warner Brothers' comedy, *Private Benjamin*, starring Goldie Hawn, will be shown in The Cellar at 8 and 10 p.m. Saturday, and again at 8:30 p.m. Sunday.

Student Orientation Schedule

MANDATORY SESSIONS FOR NEW STUDENTS				MANDATORY SESSIONS FOR RETURNING STUDENTS			
All New Students	Sun., Aug. 22	7:00 p.m.	Dunham Aud.	Registration	Wed., Aug. 25		See Panel 4
All Male Students	Mon., Aug. 23	9:00 a.m.	Dunham Aud.	All Preregistered Students	Tues., Aug. 24	1:00 p.m.	Boshamer Gym
Office Admin. Students	Mon., Aug. 23	9:00 a.m.	McLarty-Goodson 219	All Work-Study Students	Tues., Aug. 24	5:00 p.m.	Dunham Aud.
All Female Students	Mon., Aug. 23	1:00 p.m.	Dunham Aud.	All Boarding Students	Tues., Aug. 24	7:30 p.m.	See Panel 3
All Work-Study Students	Mon., Aug. 23	4:00 p.m.	Dunham Aud.	Complete Registration	Wed., Aug. 25		See Panel 4
All New Students	Mon., Aug. 23	7:00 p.m.	Dunham Aud.				
All New Students	Tues., Aug. 24	9:00 a.m.	Dunham Aud.				
Advisee Conferences	Tues., Aug. 24	9:30 a.m.	See Panel 6				
All Preregistered Students	Tues., Aug. 24	1:00 p.m.	Boshamer Gym.				
All New Students	Tues., Aug. 24	7:30 p.m.	Myers Dining Hall				

"See Panel" refers to the blue pamphlet each student received in his or hers Orientation packet.