

The Clarion

Volume 51

Brevard College

Tuesday, September 27, 1983

Number 2

Students Earn Their Tuition Through College Work-Study

By Joy Nichols

Have you ever thought about being a part of Brevard's College Work-Study Program? Do you know what it takes to become a part? According to Edwin K. Cunningham, Brevard College's financial-aid director, an individual's family circumstances "determines the feasibility of the Work-Study Grant."

If having a part-time job while attending college will not put a heavy burden upon you or upon your family, you may be considered for the CW-S program next year. A vital thing to remember is that you must fill out a Financial Aid Form (FAF) and a (financial) need must be determined from a "needs analysis" if you are to be considered.

The CW-S Grant is about \$700 per year, and about \$73,000 is budgeted for the program each year. This year the program has a little over 100 Brevard College participants. There are certain federal stipulations that the financial aid department office of

Brevard College must meet if the federally allocated program is to continue. Basically, it must estimate a student's need, and if it is decided that a student may work under the program, (s)he must be paid the minimum wage (\$3.35/hour). It is also the college's responsibility to see that a student receives his/her paycheck.

CW-S students are placed by the financial aid administrator in jobs that are compatible with, but not necessarily complementary to their studies. Most students involved feel that it is a "really good program." Jerry Quesenberry, a Brevard freshman studying mechanical engineering, says that "it's a good experience." When asked for suggestions, he said that "nothing needs changing."

Most CW-S students must deal with many people while on the job and feel that their present jobs will serve as good references or as good job experiences. Paige Benson, a freshman with a double major in dance and computer programming, loves working with other people and believes

that working as a library assistant is "most importantly a good job reference." Sophomore Genie Glover, who works in the Student Union snack bar, thinks that her job may be very helpful to her in the future. "If I ever get into a bind," she says, "I'll have a little bit of experience behind me."

The CW-S student is literally an aid to Brevard's College's regular students. Last year, Genie worked as a "student assistant to Dr. Truesdale and sometimes to Mr. Decatur, sorting and grading papers, running errands, and typing." The College Work-Study Program at Brevard has eight major divisions, the largest of which is instructional. Within that division there are five areas: 1) humanities, 2) social sciences, 3) math and science, 4) fine arts, 5) tutoring. The other seven divisions are in development and public relations, the admissions department, student affairs, the library, the athletic department, the book store, and food services (ARA). Usually, a student's past experience determines the division in which he is placed.



The New Gate at BC's main entrance

Entrance Near Completion

By Barbie Brennan

The Brevard College "facelift" is nearing completion, according to Director of Physical Operations Larry Bessette. In addition to the brick columns and grill work that have been added to the campus' main entrance, extensive landscaping is being done.

Fourteen-foot cedar and White Bradford pear trees are being added inside the main entrance. Additional pear trees will go in the median of the entranceway drive. Twelve 35-foot water oaks will be planted along both sides of the walkway. New light poles and

shrubbery are already in place.

"All trees are scheduled to be in place in approximately 60 days," Bessette stated, "depending on the weather. The overall plan is for the campus to look like a complete project instead of always looking in a state of renovation."

The purpose of the project is to make Brevard College more identifiable and attractive to passers-by and prospective students. The college Board of Trustees is backing this project which was conceived many years ago.

College Day Program Attracts 80 Schools

By Paige Dickens

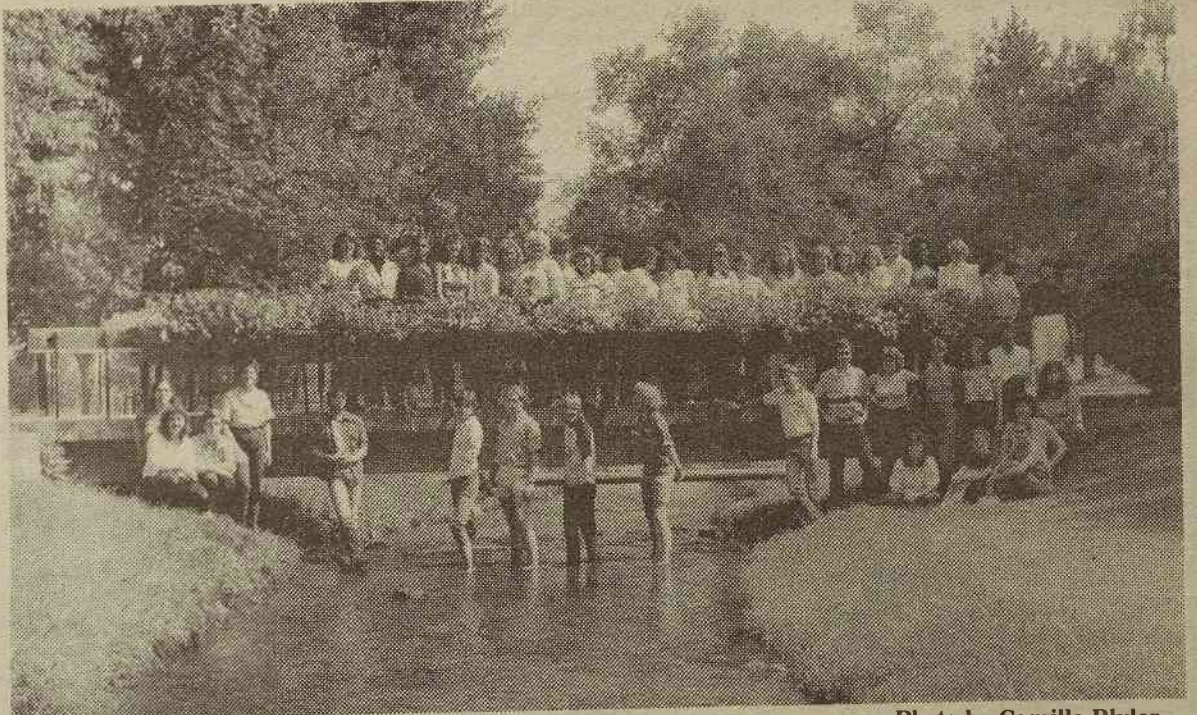
On Thursday, September 29, the Office of Admissions will host the annual Post Secondary Opportunity Session, or College Day, in Boshamer Gymnasium between 9:00 a.m. and 12:00 noon.

Over 80 two-year, four-year, technical, and nursing schools will be on campus to provide Transylvania County high school and Brevard College students with information concerning academic and transfer programs. All branches of the North Carolina University system will be represented along with major universities from South Carolina and Tennessee.

45 minutes to an hour talking to as many schools as possible. "This is an excellent opportunity for sophomores to look into transfer programs available for next year and to get first hand information concerning deadlines on scholarships, housing, financial aid, and applications," stated Nancy Witek, Associate Dean of Admissions at Brevard.

According to Mrs. Witek, sophomores should begin making transfer preparations by applying to various schools, sending transcripts, and having faculty members prepare recommendations.

As a result of the College Day on Thursday, class schedules will be switched for Wednesday and Thursday of this week only.



The 1983-84 Collegiate Singers

Photo by Camille Plyler

Collegiate Singers To Present Outdoor Concert October 2nd

Sunday, October 2, at 3:00 p.m., the Brevard College campus will resound with the heralds of voices and horns, as the Brevard Collegiate Singers present their first concert of the school year, a SINGSTUNDE (German for "sing-hour"), in conjunction with the Brevard College Brass Ensemble. The concert will be on the front lawn of President Jacob

Martinson's home on the Brevard campus. Some seating will be available, but you may wish to bring your own blanket or lawn chair. In case of rain, the program will take place in Dunham Auditorium.

The performance features sacred music of the early Moravian Church, including works by Geisler, Peter Hagen and

Herbert. There will be solos by voice faculty member Harvey Miller ("I Will Go In The Strength of The Lord"). Founded in 1457, the Moravian Church had its roots in Bohemia and Moravia, its membership being drawn from the later locale. The church was almost completely

Continued On Page Four

Sophomore participation is greatly encouraged and sophomores should spend at least