

# Getaway

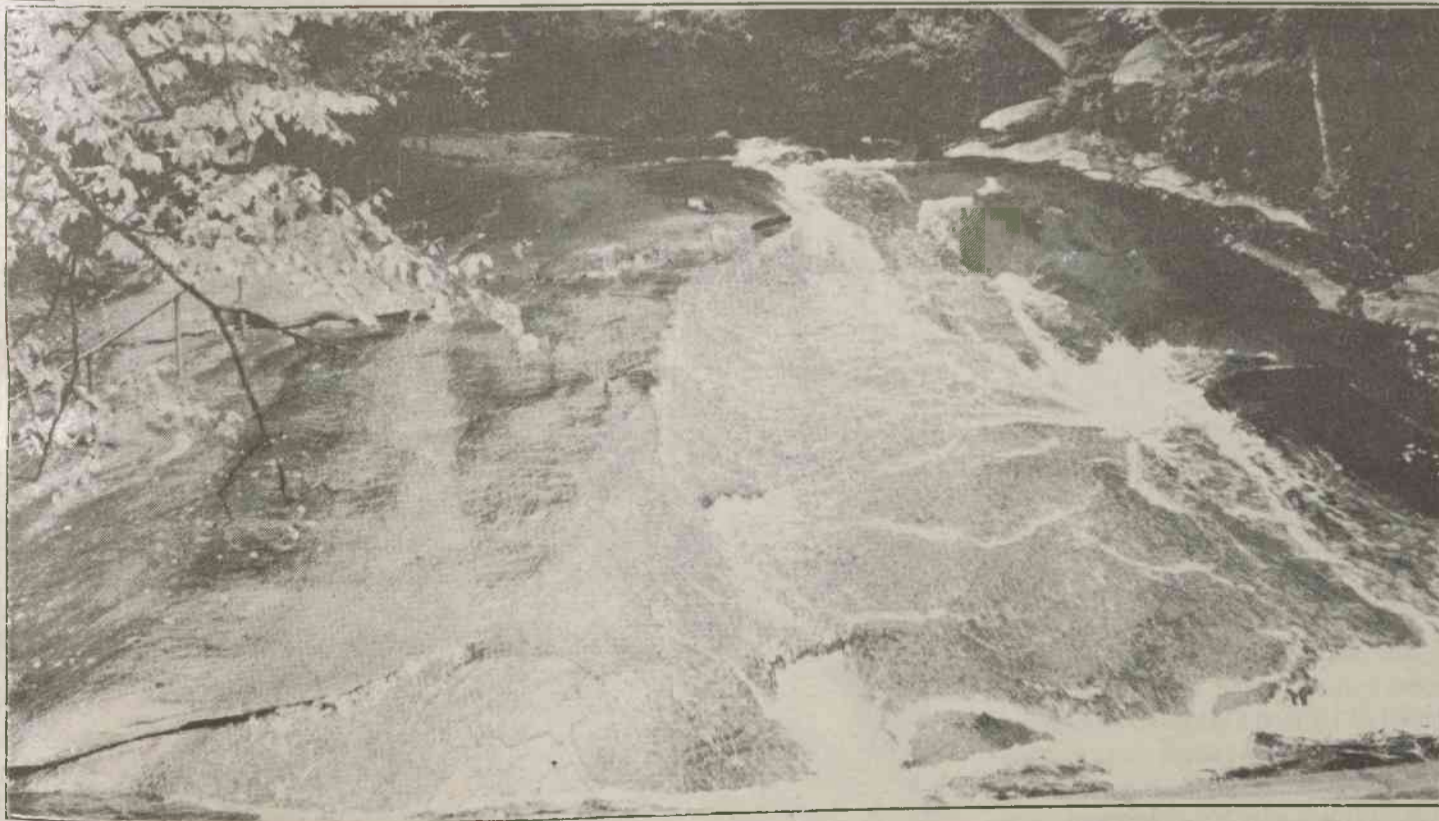
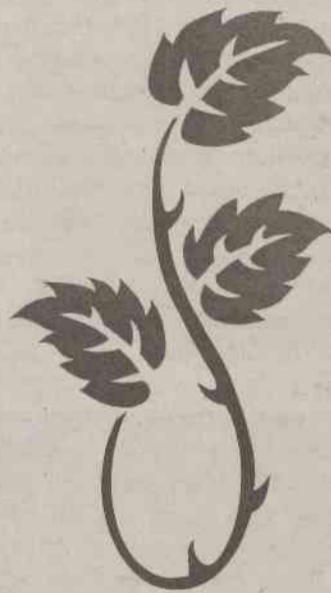
# TO THE FOREST

## at Pisgah

-  Off-road Vehicle Trails
-  Picnicking
-  Rafting
-  Restaurants Nearby
-  Rock Climbing
-  Scenic Drives
-  Snowmobiling
-  Snowshoeing
-  Swimming Beaches
-  Swimming Pool
-  Visitor Center
-  Wilderness Backpacking
-  Winter Camping
-  Wheelchair Trails



(Top) *The Cradle of Forestry has been a popular attraction for many years. It has been enjoyed by many.* (Bottom) *Sliding Rock, formed by natural means, has awed many visitors.* Clarion photo by Rhonda Parker



Forest Service has been forced to erect a fence this year so that visitors will not endanger themselves by getting too close to the 60 foot cliff. The waterfall is especially beautiful during the winter because the water seeping through the rock formation freezes, leaving many beautiful icicle forms.

The Pisgah Forest National Fish Hatchery is located about six miles

above the Ranger Station. Visitors are welcome. It is one of the largest trout hatcheries in the country.

Sliding Rock touches a little of the child within us all, to find a reasonable motive to slide down a very slippery rock into a very cold pool of mountain water. Once your motive is clear, slide until you drop.

If hiking is your thing, you can

hike until you drop on any of the hundreds of miles of trails within the forest. Many high and low impact hikes are available, but if you are unsure which is best suited for you, check the maps of trails at the Ranger Station. They will be glad to help, and they have many maps for you to look at and purchase.

Hunting and fishing are allowed in

certain parts of the forest, but those sports are regulated by the state. You will need to check with the N.C. Wildlife Resources Commission for regulations and license requirements. You may contact them at: 1-800-662-7137.

If a nice slow ride is all you want to do, there is an access to The Blue Ridge Parkway a few miles above Sliding Rock. The "Parkway" is a designated "scenic drive". There are numerous overlooks and stunning scenery to view. Around seventeen million people visit the "Parkway" each year. It is open year round, except when severe weather conditions force the closure of some sections. Most of the visitor's centers are open from April to October.

This is only a short review of the many places to go and things to do in and around the Pisgah National Forest. The area offers a nice diversion from the classroom and, of course, homework. As you enjoy the forest and its many offerings, please try to remember to pick up and throw away any trash you may be tempted to leave so the next person won't have to.

For information on this or any other National Forest or Park, write to: National Park Supervisor's Office, 160A Zillicoa Street, Asheville, N.C., 28802 or feel free to call (704) 257-4200.