

THE CLARION

Over 65 Years of Reporting

Issue 5

BREVARD COLLEGE'S STUDENT NEWSPAPER

April 14, 2000

Campus Voice Self-Esteem . . . page 3

Earth Day Events . . . page 4

Student Art Show . . . page 9

Sports . . . page 12

Earth celebrates anniversary Harvard still tops grad school ranks

BY LAURA FERRELL

Earth Week this year marks the 30th anniversary worldwide and the third year here at Brevard College. Earth Week is sponsored by a partnership of the Center for Service Learning, TWISTER Productions and the Division of Environmental Studies, Mathematics and Natural Sciences.

Three main ideas thread together this event: educating the public on environmental issues, service and celebration. The Earth Week committee consists of students, faculty and staff.

The faculty and staff include Dr. Jennifer Frick, associate professor of ecology and environmental studies; Linda Helms, director of internships and volunteer services; Curt Crowhurst, associate dean for campus life; and Beth Fisher, lab manager and instructor of biology.

Sarah Brinker, Ralphe Rathbone, Kristen Cherry, Erica Streich, Shannon Riley, Shelley Moore, Katie Smith, Lindi Lagman, Chijioke Chinaka, Anann O'Brien, Anahita Modaresi, Eric Hinson and Ike Wheelless comprise the student

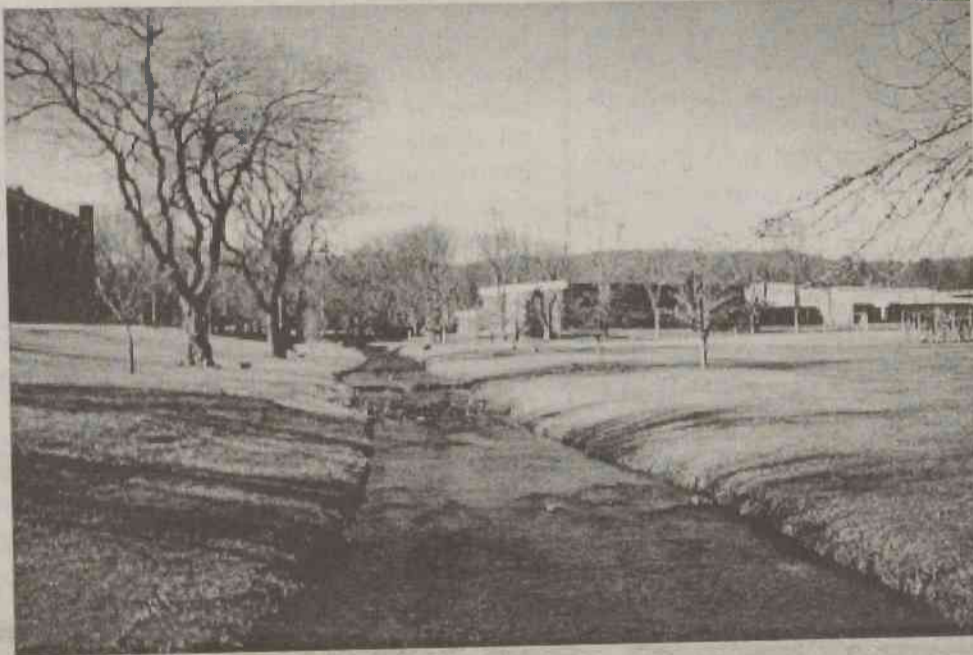


Photo by Lindi Lagman.

Many of the Earth Day events will take place along King's Creek.

volunteers. The group has been meeting every Wednesday to plan the weeklong event.

"In my fifth year of Earth Day activities things have changed with more students planning and hosting events! My hope for the future is that the entire campus will someday embrace the environmental values of

Earth Day, now in its 30th year – think GREEN!" said Crowhurst.

This year's Earth Week will kick off on Saturday, April 15 and last through Thursday, April 20.

Earth Day Events on Page 4

Bachelor auction benefits charity

BY LILLIAN SCARPINITO

Have you ever wanted a date for a good cause?

On Thursday, April 6 at 8:30 p.m. Twister Productions held a Bachelor Auction in Coltrane. A portion of the money raised went to the local Humane Society. The event did not end until all the male bachelors were sold to our charitable Brevard women! Bids started at \$3.

"This charity auction is for a good cause. That is the reason I'm doing it," one of the bachelors, An-



Photo by Lindi Lagman.

Bidding started at \$3 for the men involved in the charity auction.

draw Fort said.

The event was the brainchild of Carrie Campbell, MC for the evening. Two excited ladies commented before the show began, "I might be bidding on somebody...it will be a spur of the moment thing." "I will be bidding if

they take their clothes off!" said Aymee Prosser. Both women wound up bidding on men, despite the fact that the bachelors remained fully clothed for the entire evening.

The bachelors included Adam Murry, sold at \$3.00; Daniel Lomnitzer, sold at \$3.50; Michael McGuiness, sold at \$3.50; Durbin Davis, sold at \$3.00; Ike Wheelis, sold at \$3.00; Christian Ray, sold at \$8.00; Wes Vanasek, sold at \$5.00; Andrew Fort, sold at \$3.00; Chris Fredrickson, sold at \$4.00; Gabriel Morteza, sold at \$6.00; Chris Beaubais, sold at \$5.50; Jared MacEacheren, sold at \$5.00 and Mark Landis, sold at \$6.50.

When the event ended, the bachelors were asked to get together for a group picture.

Harvard University tops the education school rankings in the 2001 edition of the U.S. News & World Report guide to the Best Graduate Schools. The April 10 issue of U.S. News (on newsstands April 3) will contain select rankings. The guidebook, with all rankings and other features, goes on sale the same day.

The education schools in the top 25 are:

1. Harvard University (MA)
2. Stanford University (CA)
3. Teachers College, Columbia University (NY)
4. University of California-Berkeley
5. University of California-Los Angeles
6. Vanderbilt University (Peabody) (TN)
7. University of Michigan-Ann Arbor
8. Ohio State University-Columbus
9. University of Illinois-Urbana-Champaign
9. University of Wisconsin-Madison
11. University of Pennsylvania
12. New York University
13. University of Texas-Austin
14. Michigan State University
15. University of Minnesota-Twin Cities
16. Indiana University-Bloomington
17. Arizona State University-Main Campus
18. University of North Carolina-Chapel Hill
19. University of Virginia (Curry)
20. Northwestern University (IL)
21. Temple University (PA)
22. University of Oregon
23. Boston College (Lynch)
24. University of Kansas
25. University of Maryland-

Continued On Page 5