

THE LANCE STAFF

ED BUTTERWORTH Editor-in-Chief
 LINDA SUSONG Associate Editor
 MARGARET PARRISH Associate Editor
 JOE JUNOD Sports Editor
 PAUL SHANE Business Manager
 JIM NEAL Assistant Business Manager
 PHOTOGRAPHERS Pete Cook, Sandy Harris
 PEGGY GAMBLE Student Association
 DEBBIE HARPER Administration
 JIM SIRBAUGH Dormitory
 JOE MITCHELL Drama
 CARLEEN STRAYER Music
 LINDA CURTIS Academic News
 BUSINESS STAFF: Charma Walker, Todd White, Susie Simpson, June Stockbridge
 Contributors: Warren Mosley, Ray Higgins, Carolyn Caldwell, Bob Devlin, Linda Curtis, Ellen Moss, and H. B. Stubbs

Delayed Christmas

Christmas is a very special time of year. It is a time for love and friendship. It is a time to be creative, thoughtful, and ever cheerful. Christmas is also a spirit. It is a feeling, intangible, undefined, something inside a person that is just there.

The impact of such spirit is felt the world over. Even during world chaos, peace is declared to respect this most honored occasion. The spirit of Christmas is displayed far in advance by the world of business. Stores are decked with lights and ornaments soon after Thanksgiving and remain intact until mid January post-Christmas sales are completed.

Accompanying the spirit of Christmas, the coldness of winter sets in. Children can everywhere be seen on Santa's knee and people rush about in a last minute frenzy.

As a rule, Christmas and the accompanying facets that each of us are used to attributing to its spirit come early. But not this year for St. Andrews students. Everywhere on campus there are sure signs of the approaching season, but few students are aware that elsewhere Christmas preparations are in full swing. As final exams begin, Christmas is but 11 days away.

Although there is a lack of spirit on campus, this is only natural, for who can be but so concerned such an academically strategic time.

Although Christmas and the connotations that we personally attribute to it may come late this year, they will indeed come prior to that sacred date. Let us be thankful for the opportunity to be home once again this year for Christmas, an opportunity that some are not privileged to have.

THE EDITORIAL STAFF OF THE LANCE WISEHESEVERYONE
 A VERY MERRY CHRISTMAS AND A HAPPY NEW YEAR.

Stargazer

by Dudley

We've got a topnotch motion picture drama on campus this time, and it's not difficult to see from it how the cinematic theater has been given its stature in the current decade. Obviously the most significant and influential hand in the medium is that of the late Eugene O'Neill; the proof is the film version of one of his last plays, perhaps his greatest, "Long Day's Journey into Night."

Although it has been cut from its original four-hour stage form, this drama still contains every drop of the genius and the horror that O'Neill had visualized in its conception. The story is one of love, hate, desperation and destruction; it is a tale of a hell on earth created by a family whose members are destroyed and yet, curiously, fascinated by each other's hands and tongues.

The artistry of the production is superb; the acting is none but the best; Motley's costumes and the dingy settings by Richard Stylbert add their fair share to the hideous cheerlessness of the plot; and, of course, the drama itself is classic in its own way, something like a sophisticated Albee creation. The beat of the story is powerful, constant, thunderous and hypnotizing; this is life, one thinks, but only life lived beyond the point of apathy, and into inhuman pseudo-emotion.

There is no need to look for surface symbolism in this tragedy, for O'Neill has disclosed the meaning. It is, in a sense, autobiographical; the events were taken from a day in 1912 when O'Neill and his family were living at their summer house in New London, Connecticut. The characters are all drawn from life, though individual traits and specific actions were altered to better suit the story.

The father (Richard Richardson) is a bully, sharp-tongued and impulsive, yet with a hidden humility that he allows to show only in a few instances. The mother (Kathryn Hepburn) is a sick woman, a morphine addict, whose pathetic temperament runs the full gamut from tenderness to cruel violence.

And their two sons are of precisely opposite character. The older (Jason Robards) is a forceful, yet compassionate, ruffian when he is sober, perhaps a bit afraid or ashamed of reality, but nonetheless acutely aware of it. On the other hand, the younger (Dean Stockwell) is a winning and honest fellow, just-turned-man, who is suffering from tuberculosis, but who might love life, could he escape his wretched family. It is he who represents the author.

The film speaks bluntly on these people's problems, and by the time the journey into night is ended, the viewer knows them as well as he does himself. It's a long day and a long journey, but worth every minute for its tremendous insight into human nature.

Student Poll

Drinking Issues Expose Student Views

This poll was conducted by the Social Welfare Committee of the Senate in order to learn student opinion with regards to the present drinking issue. 91.9% of the Student Body participated in this survey. Individual tallies by dorms are available upon request. Campus-wide and percentage totals for each of the questions are as follows:

1. 74.6% of the people polled drink alcoholic beverages.
- 20.2% of the people polled do not drink alcoholic beverages and don't mind others drinking around them.
- 4.5% of the people polled do not drink alcoholic beverages and do not mind others drinking around them.
- .5% of the people polled were undecided.
2. 19.4% of the people polled believe that the present drinking regulations at St. Andrews are adequate and reasonable.
- 77.6% of the people polled believe that the present drinking regulations at St. Andrews should be changed to allow drinking on campus.
- 2.8% of the people polled were undecided.
3. 63.0% of the people polled are allowed by their parents to drink at home.
- 33.4% of the people polled are not allowed by their parents to drink at home.
- 3.4% of the people polled gave no comment.
4. 50.3% of the people polled have in the past violated the drinking rule or do so presently.
- 49.2% of the people polled have never violated the drinking rule.
- .4% of the people polled gave no comment.
5. 64.0% of the people polled think that adoption of a regulation which would allow stu-

dents to engage in social drinking on campus would improve the social life at St. Andrews. 32.5% of the people polled think that adoption of a regulation which would allow students to engage in social drinking on campus would not improve the social life at St. Andrews. 3.3% of the people polled were undecided.

6. 56.7% of the people polled believed that if there were a chance that St. Andrews would suffer financially or reputation-wise, if the rule were changed, to allow drinking on campus, this would be a valid reason for not changing the present rule. 39.1% of the people polled believe that this is not a valid reason.

4.0% of the people polled were undecided.

7. 74.6% of the people polled think that some form of education in responsible drinking should be instituted if the present drinking were changed to allow drinking on campus.

22.6% of the people polled do not think that some form of education in responsible drinking should be instituted if the present drinking rule were changed to allow drinking on campus.

2.6% of the people polled were undecided.

8. Percentages on this question were computed using as a divider the number of persons who answered that they favored a change in the present drinking policy. The portion of this group which supported the reason is indicated by the percentage. Out of the 578 people who were in favor of drinking on campus the following reasons were given:

- a. 48.7% of the people polled believe that time and expense would be saved by not having

to go to drinking places off campus.

b. 55.8% of the people polled would prefer the atmosphere and privacy of their own room to an off-campus bar.

c. 81.6% of the people polled would enjoy the freedom of being able to drink with their friends in a social situation on campus.

d. 69.8% of the people polled believe that the students at St. Andrews can handle the responsibility that drinking on campus requires.

e. 45.1% of the people polled believe that the new rule would be enforced more effectively than the old rule.

f. 93.4% of the people polled feel that the freedom to drink or not to drink, as one chooses, should be the right of all students at St. Andrews.

9. Percentages on this question were computed using as a divider the number of persons who answered that they were NOT in favor of a change in the present drinking policy. Out of the 145 people who were not in favor of drinking on campus the following reasons were given:

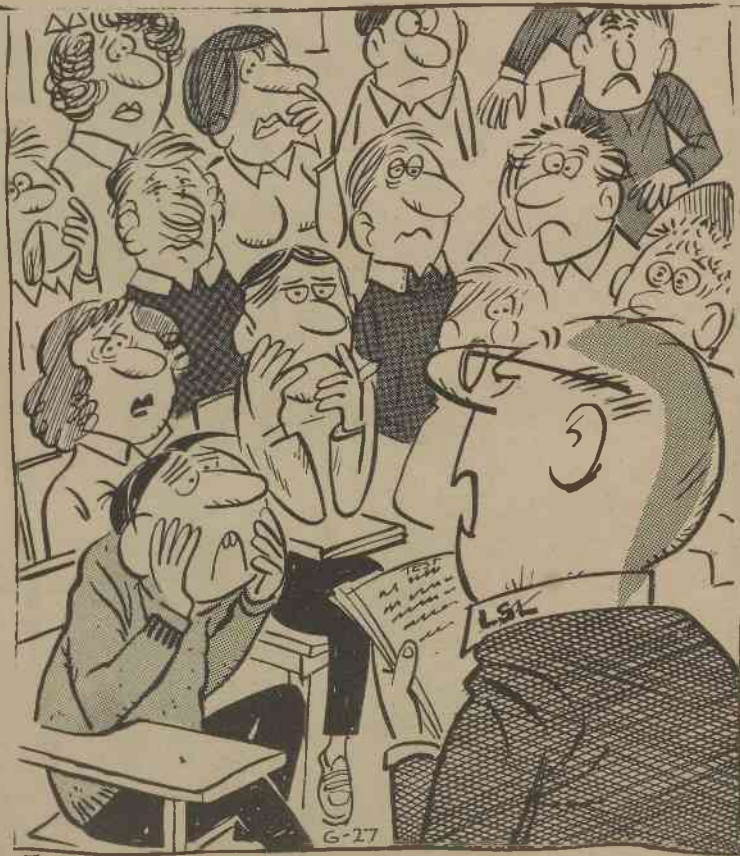
- a. 53.1% of the people polled believe that drinking on campus is dangerous because it would tend to encourage those on campus who don't drink to drink.
- b. 55.1% of the people polled believe that allowing drinking on campus would tend to infringe on the rights of non-drinkers.
- c. 83.4% of the people polled believe that drinking on campus would tend to make maintaining of quiet and general order in the suites very difficult.
- d. 48.9% of the people polled believe the drinking bill allowing drinking on campus, if passed, would be unenforceable.
- e. 5.5% of the people polled believe that drinking is immoral, unchristian.
- f. 33.1% of the people polled believe that students at St. Andrews are not responsible enough in terms of maturity and age to handle the responsibility of drinking on campus.
- g. 54.4% of the people polled believe that if people want to drink, it isn't that much trouble for them to go off campus to do so.

Christmas Formal

The Student Center Board sponsored the annual formal Christmas dance last Saturday night. Silver and blue were the colors used in transforming the cafeteria into a Christmas wonderland. Mary Battle Higgins was in charge of the fascinating decorations, which included a manger scene, a Christmas tree, Stars of David and a "Mitzah Bar." Music was provided by an Atlanta Orchestra, The Martiniques.

Volunteers?

The Tri-County Community Action Program is looking for persons interested in serving as volunteers in its various projects in Scotland, Richmond and Robeson counties. If you have interests in spending volunteer hours in consumer education, cooking and sewing instruction, nursing, basic education, etc., contact Martha James, ext. 284, box 394; or fill out a volunteer services application in the College Pastor's office.



"I WON'T HOLD YOU TO TH' TEXT ON THIS EXAM — ONLY MY INTERPRETATION OF IT."

Hunters to Take Safety Course

The first NRA Hunter Safety Course will be given on Dec. 9 for 1:00 to 5:00 p.m. All members of the Gun Club are required to take the course sometime this year. Dues must be paid before taking the course, which will be limited to 30 people.

Anyone interested in becoming an instructor should take the first course. There will be a

charge of 50¢ per person to cover the materials used.

In the near future the administration will require anyone who wants to have a gun on campus to take the hunter's safety course.

The test will be held in room 119 in the L.A. Mike McCord will sign up those interested in taking the course.