

Challenge grant received for library computerization

Chowan College has been notified that the trustees of the George I. Alden Trust of Worcester, Mass., are providing a 3:1 challenge grant of \$50,000 to be used for the computerization of Whitaker Library.

Francis H. Dewey III, chairman of the Alden trustees, said that the grant was being made to "encourage the addition of many moderate-sized gifts from new sources." The challenge is based upon the college raising an additional \$150,000 by June 30, 1998.

Whitaker Library is being computerized to provide electronic resources such as computerized databases and Internet/World Wide Web access to the academic community and citizens of the region. The system will also digitally link the library's cataloging, search, circulation, acquisition and serials processing operations.

E. Vincent Tilson, vice president for development, said "the computerization of the library is imperative since Chowan is now a four-year, fully accredited institution where students must negotiate a vast amount of information available to them as they research their class projects and prepare course studies."

"Teaching students this technology and having it available in the library for their daily use will prepare them for doing well after graduation in jobs which so often now require computer research skills," he added.

In responding to the grant, President Stanley G. Lott said "I am deeply grateful for the confidence and generosity of the trustees of the George I. Alden Trust. We will, indeed, be good stewards of the funds received and strive to use the monies in such a way as to achieve the greatest financial mileage."

The Alden Trust was established by Mr. George I. Alden, who was educated at Harvard's Lawrence School of Science and taught mechanical engineering for almost three decades at Worcester Polytechnic Institute, on August 24, 1926. He invented a dynamometer for measuring the power of all kinds of machines and also the hydraulic elevator.

Among the purposes for establishing the trust, Alden stated that he wished to "promote education in schools, college or other educational institutions, with a preference for industrial, vocational, or professional education."

Graduation

Continued from Page 1

experience. Reach out to those in need. Stand up for what you believe in. Take part in community affairs, be a volunteer." Quoting Dr. Henry Foster, Kirk told the audience, "Making a living is about what you make. Making a life is about what you give."

B. Franklin Lowe, Jr., vice president for academic affairs, presented the Senior Scholastic Award for highest academic honors in the class to co-recipients Evelyn Michelle Copeland, a business administration major from Windsor, N.C. and Angela M. Lowery, an English major from Prince George, Va.

The 1997 Excellence in Teaching Award was bestowed by Lowe on Richard R. Gay, associate professor of English. Gay, who began teaching at Chowan in 1991, was chosen for the award by his faculty colleagues. In addition to a cash award and framed certificate, the honor elects him to serve as faculty marshal for the 1997-98 academic year.

In a special tribute, an engraved plaque was awarded to James M. Chamblee, retiring chair of fine arts. Vice President Lowe described Chamblee's outstanding service, "He has served with distinction in his role as a teacher, as head of the Division of Music and as chair of the Department of Fine Arts." Chamblee, who began teaching at Chowan in 1959, provided leadership as chair of the music department for 32 years.

Alden Trust provides 3:1 challenge grant of \$50,000

Professor Richard Gay receives Excellence in Teaching Award

Hundreds of cyclists coast onto Chowan's campus for MS benefit

Collecting more than \$140,500 for the Hampton Roads Chapter of the Multiple Sclerosis Society, over 450 cyclists and 150 volunteers descended on Chowan's campus June 1 for the annual fundraising tour. Michelle Covey, National M.S. Society Program Manager from Virginia Beach, reports that, "while the average cyclist raises around \$300, twenty-one individuals in this tour raised pledges in excess of \$1,000 each."

Joining more than 150 MS Society tours around the U.S., the Hampton Roads group consists of more than 50 teams. Team membership ranges from bicycle associations to circles of friends. Although this year's tour originated and ended at the Suffolk, Va. airport, regional riders have cycled various 150-mile routes throughout their 17-year history. Tending to cyclists ranging in age from 16 to 76, volunteers provide rest stops every ten miles along the route with Emergency Medical Technicians at each stop for medical support. Ten to fifteen bicycle shops provide mechanical support along with two roving vehicles and a roving cyclist.

Watching their arrival was fascinating. As

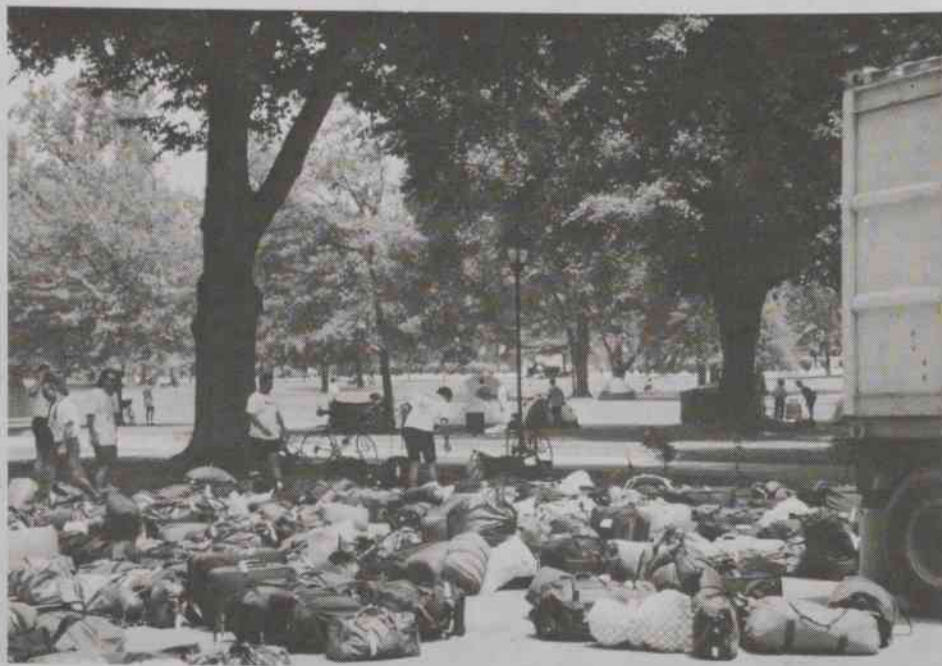
clusters of brilliant riders, outfitted in the latest biking attire and safety helmets, reached Jones Drive after a grueling one-day 70-mile trip, applause and cheers greeted them at the gate. Cyclists peddled their way around Squirrel Park to a kaleidoscopic sea of luggage stretching from the rear of a tractor-trailer rig across the full width of a parking lot.

At the suggestion of an alumnus, the colorful group has utilized the indoor and outdoor facilities of Chowan during their overnight stop for six years. Some cyclists treat sore muscles to a massage, provided by volunteers under subdued lighting in the Braves Den, while others relax under trees on the green or go for a swim in the pool. Although riders are offered the comfort of beds in residence halls, many enjoy the simplicity of a tent on the green under the stars. Dinner and breakfast are served for the group in Thomas Cafeteria.

Information may be obtained for next year's ride by calling the MS Hampton Roads Chapter office at (757) 490-9627.



More than 450 cyclists peddled onto the campus during their tour to raise funds for the Multiple Sclerosis Society.



Sleeping bags and other gear, unloaded from a tractor-trailer rig, await the arrival of the cyclists to the campus.