



PUNCH IS SERVED FOLLOWING ORIENTATION PROGRAM

Freshmen Give Reporter First Impressions Of Wesleyan

It is always interesting to know the freshman's first impression of the college. Here are a few:

- Sandy Shipley—Everything but a gym.
- Shere Leslie—It was love at first sight.
- Edna Langston—Liked very much and thought it was pretty.
- Jim Pratt—Enjoys the lovely coeds.
- Cathy Shaw—Stupefaction.
- Tom Dew—Frats needed badly.
- Carolyn Parker—uhmm!
- Joe Boling—A gym needed with a wrestling room.
- Martha Brackett—Kind of way out, but very favorable.
- Janet Surratt—Just wonderful.
- Mary Jo Edwards—Felt completely at ease.
- John Lane—Have you come up with anything yet?

College's Week Of Orientation Features Luau

Highlighting Orientation Week was the Luau, last Thursday evening at Pearl's Pond. The Luau was planned under the direction of Mrs. Thomas Collins, chairman of the Luau Committee. Approximately 200 students attended the event.

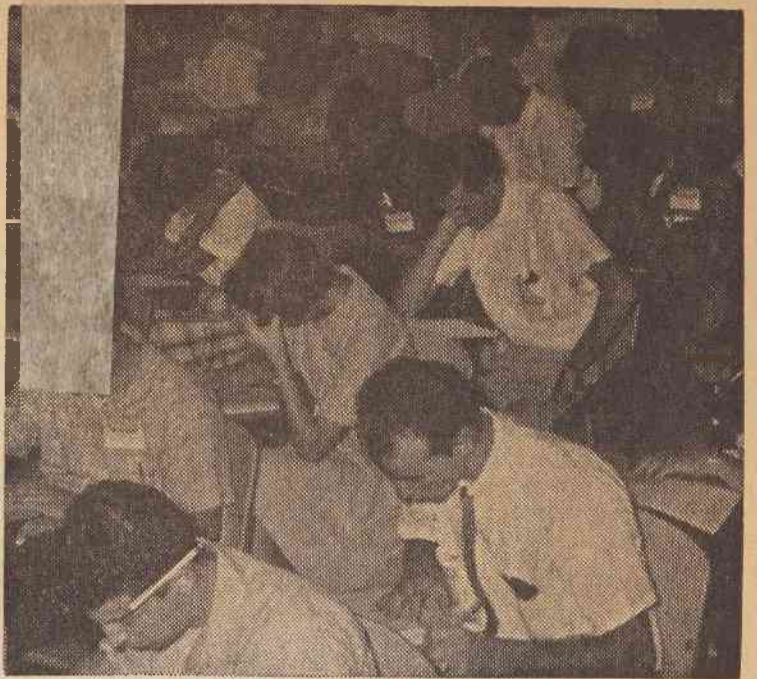
Unusual talent was found in the entertainment of the evening, as four male students, dressed as Hawaiian girls, calling themselves the Torch Lighters, danced for the group. Members of the Torch Lighters were John Bandy, Ed Vann, Larry Post, and Don Everette.

Two freshman students, Joe Boling, from Granby High School, Virginia, and John Lane of Wakefield, Virginia, gave a wrestling exhibition. Boling is a state wrestling champion of two years.

Jackie Nunan and Cathy Shaw then did the Limbo.

In keeping with the theme, refreshments were served from tables decorated with flowers and Tiki Lamps. Members of the food committee prepared fruit balls, served in watermelon shells, and various dips, along with Hawaiian punch.

Susan Black, chairman of the Orientation Committee, was head of the week of orientation.



STUDENTS PONDER ANSWERS FOR ORIENTATION TESTS

Students Receive Wesleyan Awards

Brenda Ezzell of Rocky Mount, Nelda Holder of Garner, Charles Price of Rocky Mount, John W. Gillis of Wingate and Guy Turner of Wilmington have been named freshman winners of Wesleyan Award Scholarships, according to President Thomas A. Collins. The scholarships are applicable up to \$1800 per student, or \$450 each year.

The Wesleyan Awards are given on a competitive basis and depend upon scholastic ability, leadership capacity and financial need. More than 200 students were competing for the Awards.

New Courses

Along with new students and new faculty members, new courses are being offered to students this year. In the Humanities Division, World Literature, Creative Writing, Shakespeare, and the Romantic Movement are being offered. In the same area, the music department is offering instruction in piano, voice, band, and organ. Courses will also be available in Speech, Theatre, and Drama.

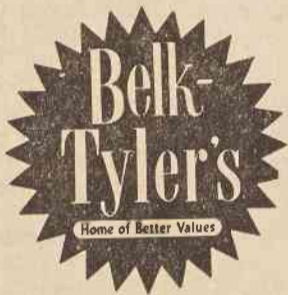
In the Social Sciences, General and Child Psychology, as well as the History of Latin America are scheduled.

Under the Division of Sciences, there are Mechanics and Optics. This is under the general classification of physics.

All of the new courses are of interest to each student. They point the way in which Wesleyan is progressing. Wesleyan is endeavoring to offer to its students the ultimate in opportunity for development.

BEST WISHES . . .

from



"Rocky Mount's LARGEST Department Store"

BUNTING, HARDY & MINGES

MEN'S CLOTHING AND FURNISHINGS

"FORMAL WEAR RENTALS"

ROCKY MOUNT, N. C.



CAROLINA
OFFICE EQUIPMENT CO.
SINCE 1921

FOR STUDENT AND FACULTY SCHOOL AND OFFICE SUPPLIES
147 S. Main St.

fashions for CAMPUS

Everything for your Back-To-School Wardrobe

- PEPPERMINT STRIPE OXFORD Shirts by SERO
- LORD JEFF, BYFORD and DAVID CHURCH SWEATERS for every mood!
- LONDON FOG COATS & JACKETS
- MADRAS Sportshirts Belts & Wallets
- NATURAL SHOULDER Suits & Sport Coats



The Young Man's Corner

Bank at the . . .

Bank Of Rocky Mount

"Your Friendly Bank . . .
... With You In Mind"

Member Federal Deposit Insurance Corporation

SUBSCRIPTION BLANK

This is a free issue to parents of Wesleyan students. SUBSCRIBE NOW for the next 15 issues for ONLY \$2.00. Checks payable to The Wesleyan Decree. Send name and address to:

The Wesleyan Decree
N. C. Wesleyan College
Rocky Mount, N. C.

Name

Address



Recommended by—

HANDMACHER

WORSTED-TEX

JONATHAN LOGAN

BOTANY 500

Bishop Laundry Co.

Pickups Monday, Wednesday, Friday

See your dormitory representative

PEOPLES

BANK AND TRUST COMPANY

Extends Best Wishes To North Carolina Wesleyan College
And Its Administration, Faculty, Staff and Students.