

built on campus, and generated the electricity that powered the college for 20 years. With the introduction of more efficient energy sources, the college converted the building into a maintenance storage area, but the construction of a new storage facility some years ago left the historic site vacant.

The Everett Gymnasium will welcome a 28,000 square foot extension to its north side.

The extension will offer offices, ball courts, an aerobics facility, and an enlarged weight room. All of these facilities will be for the use of the general student population. The interior design will be more modern and will include things like glass walls. The outside will have a covered patio space, as well as a paved area for rollerblading and street hockey.

The largest area in the building will be a multi-purpose room which can be converted from two basketball courts to a volleyball court. The multi-purpose room will also serve as a large dining space for parties of 500 or more.

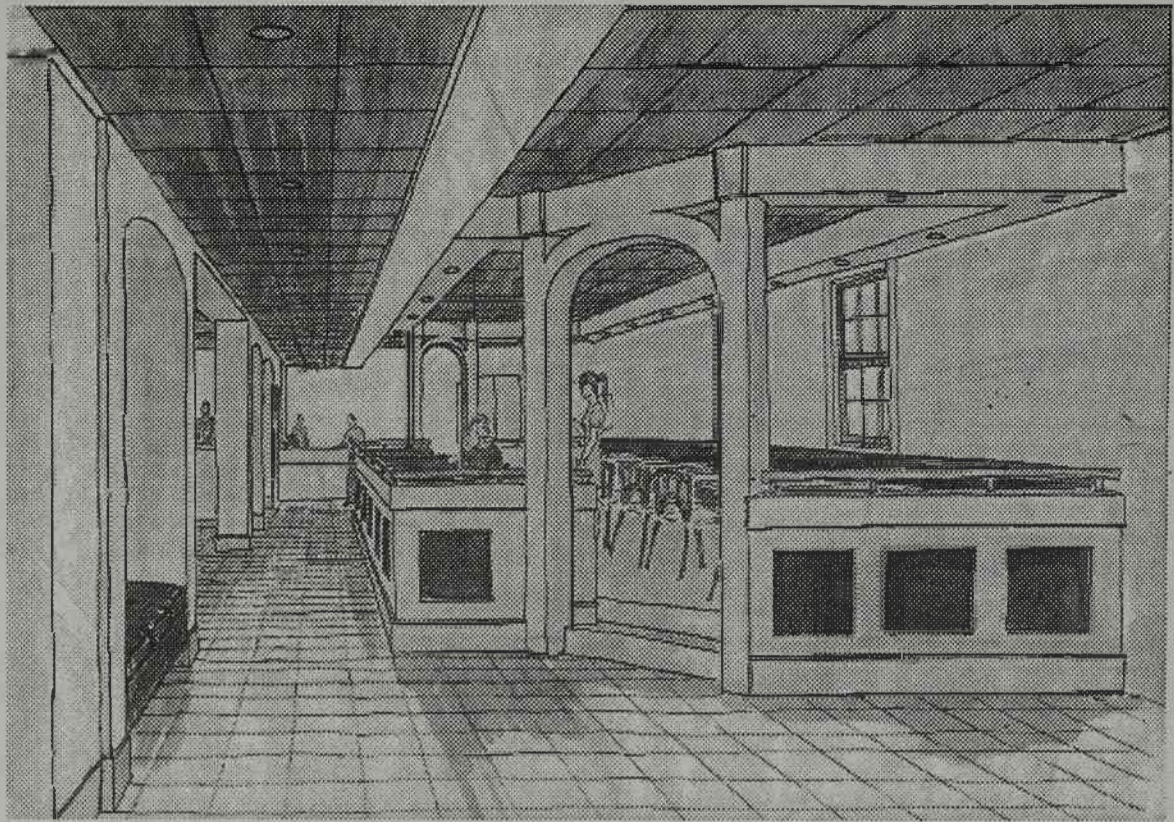
In 1998 the Student Activity Center (SAC) will begin its renovation process and be used as a fine arts center.

It will be used to display portions of the college's three collections: the Robert M. Lynch Collection of Outsider Art, lithographs and other artwork from the library of Black Mountain College, and the college's collection of pre-Columbian art.

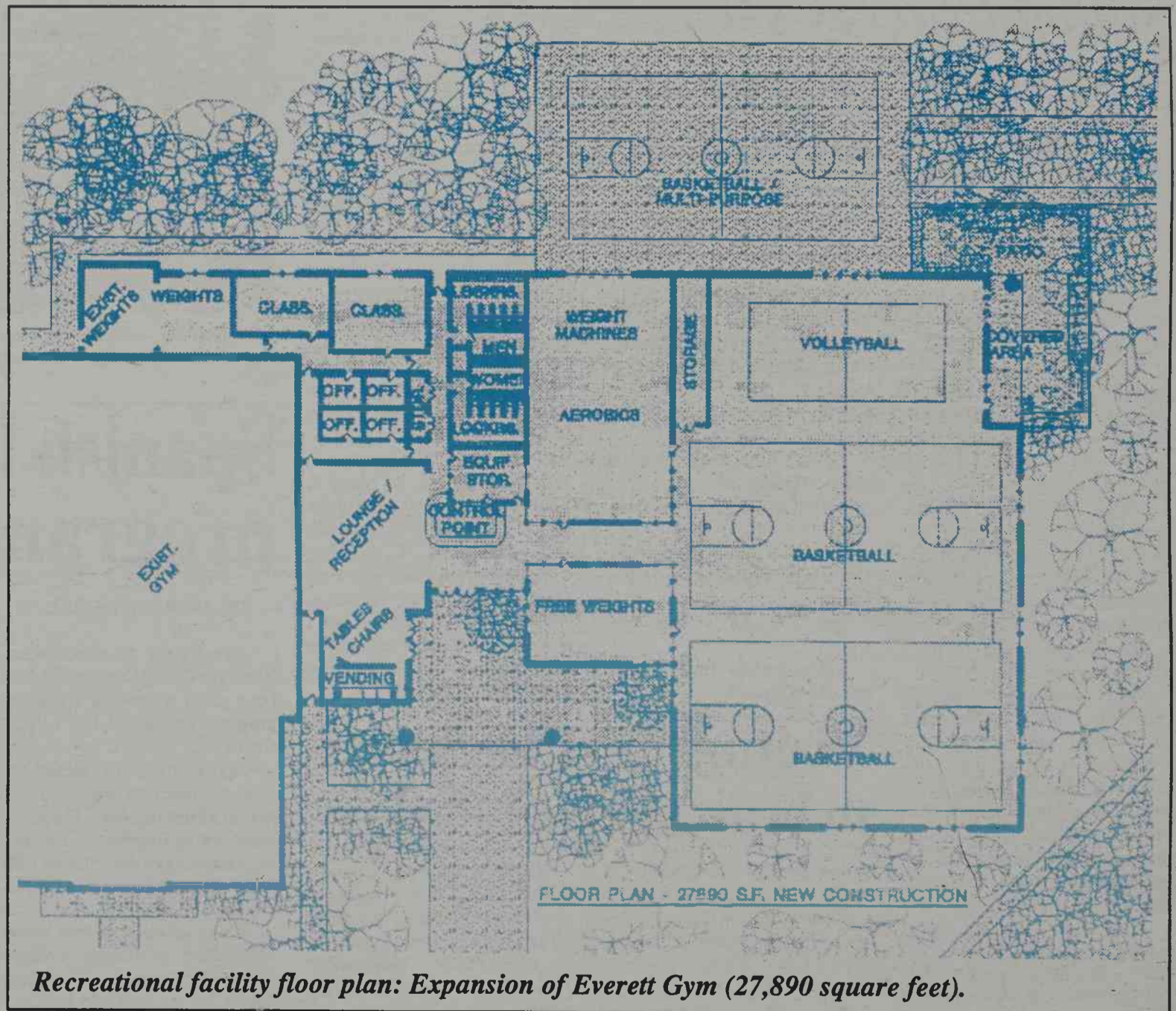
Due to be completed by the end of this fall semester are the six new tennis courts located next to Collins Hall.

This project is being completely funded by alumni, and will bring back the much missed conference play Wesleyan once enjoyed. The final dollar amount for the overall campaign has yet to be determined, but all the planning has been completed.

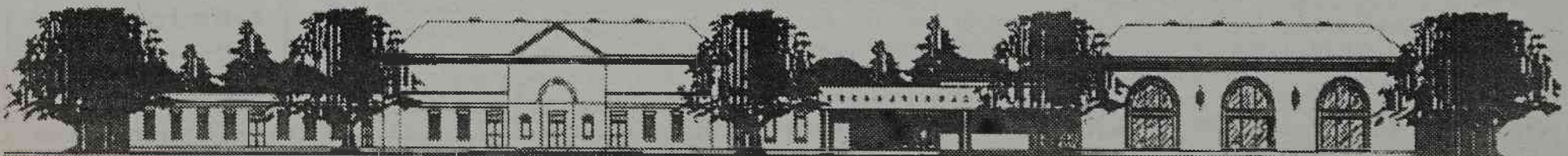
The college decided that renovating the standing brick buildings is the most cost effective way to improve the quality of life on the Wesleyan campus.



*Food court, in the one-story annex, will be open at later hours.*



*Recreational facility floor plan: Expansion of Everett Gym (27,890 square feet).*



*Recreational Facility, composite front elevation, the addition on right.*