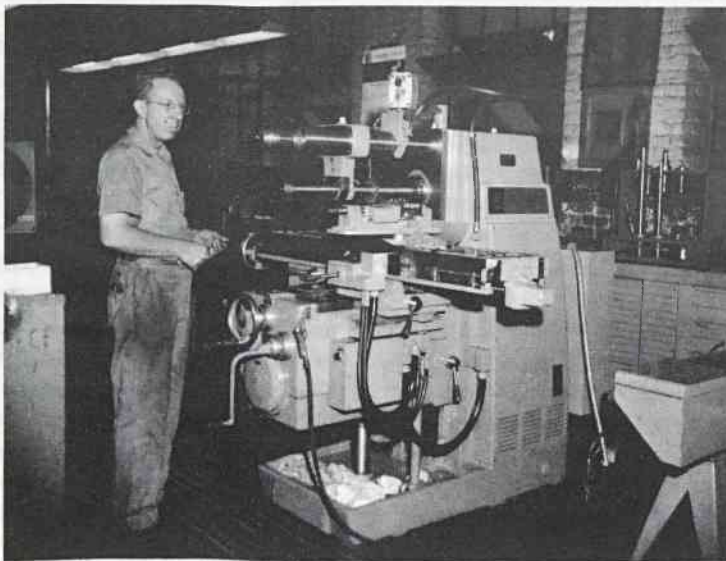


Chester Fraley operates the Brown and Sharpe hydraulic surface grinder, which will bring steel of any thickness to any tolerance (within 1/10 of 1/1000 of an inch) that prints or samples may require. Its variable holding chuck allows the close tolerance work required for parts in the tape division.



Neal Pierce stands by the new K & T horizontal milling machine. This hydraulically fed machine is automatic cycling and can produce any part in the milling machine line. It is considered the Cadillac in its field.

Other new shop equipment includes a 17" cut-off saw (which will cut a part as large as 17" in diameter), an electric furnace and cyanide gas bath for tempering parts.