

Aunt
Matilda's
Corner



Howdy!

This month, we are indebted to Ruth Peeples, Plant #4, for our recipe. It sounds delicious--but probably has a million calories.

Southern Sweet Chocolate Pie
1 Package (4 oz.) sweet chocolate
1/2 Cup butter
1 2/3 Cups (14 1/2 oz. can) evaporated milk
1 1/2 Cups sugar
3 Tablespoons cornstarch (level)
1/8 Teaspoon salt
2 Eggs
1 Teaspoon vanilla flavoring
1 Unbaked 9-inch pie shell
1 Can Angel Flake coconut
1/2 Cup chopped pecans.

Melt chocolate with butter in a saucepan over low heat, stirring until blended. Remove from heat and gradually add evaporated milk.

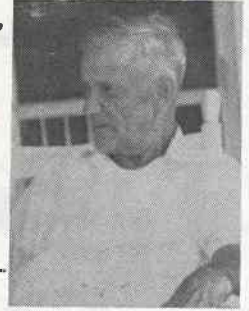
Mix sugar, cornstarch and salt thoroughly and beat in eggs and vanilla. Gradually blend in the chocolate mixture. Pour into pie shell

Combine coconut and nuts and sprinkle over filling. Bake at 375° for 50 minutes. Let cool before cutting.

'Bye, now!

In the last issue of AMCO NEWS, we were in error in identifying Thurman Miller as head fixer at Plant #2. He is employed in the Sample Department.

Mote S. Winfree, retired employee of Plant #4, died in a Winston-Salem hospital on September 7, 1965. He retired May 16, 1952, with nineteen years of service with the company.



Survivors include a daughter, Mrs. Susie Nokovich of Winston-Salem.

Mote Winfree

IN MEMORIAM

Mrs. Nancy L. Cook
Mother of Carl Cook, Machine Shop.

W. T. Jones
Father of W. G. Jones and J. O. Jones,
Machine Shop.

Mrs. Pauline D. Cleveland
Mother of David Cleveland, Machine Shop.

Baby Winters
Infant son of Wiley W. Winters, Technician, Plant #8.

Mrs. Maude Finney
Mother of Carleen King, turner, Greige Goods Department, Plant #1.

Otis Lloyd Taylor
Father of Mary Ruth Culler, Knitting Department, Plant #1.

Charlie Ledbetter
Father of Frances Horne, Knitting Department, Plant #1.

Henry Bellamy
Brother of John Bellamy, Fixer, Plant #1.

George W. Collins
Father of Carney Penny, Knitting Department, Plant #1.