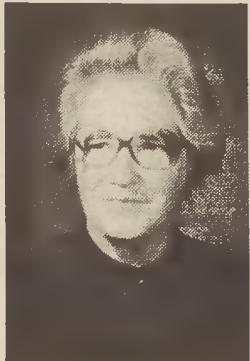


Special Anniversaries With Corporation

Forty Years

Years' Service



Kathryn Albert
Plant 3

Betty Johnson
Plant 3

Nellie Ray
Plant 3

Helen Rierson
Plant 3



Earle Hedrick
Plant 7

Nancy Tilley
Plant 11

Dolores Lambeth
Plant 20

Dale Denny
Administrative Office

Years' Service



Zulene Luck
Plant 7

Claude Eddinger
Plant 7

Daphne Hensley
Administrative Office

Frances Smith
Administrative Office

Service



Mary Motsinger
Plant 3

Charles Oakes
Administrative Office



John Stilwell
Machine Shop

Employees Receive Continued

Five years' service: James E. Baldwin, Susan Penley, Michael Watkins and Yvonne Williams, Plant 1; Raymond Smith, Steven Arnder, Catherine Jackson, Myrtle Johnson, Pauline Johnson, Vonna Easter, Shirley McMahan, Ida Rogers, Mattiarea Holder, Lorene Tolbert, Rachel Wright, Billie Martin and Mary Lowe, Plant 2; Janie Blackburn, Pamela Blaylock, Mary Bryant, Linda Corns, Myrl Dockery, Kathy Eastridge, Dennis Lovings, Douglas Pike and Harvey Stack, Plant 4; Mary Cook, and Elizabeth Taylor, Plant 6; Jacqueline Cobb, Bettye S. Curtis, Roy Edwards, Walton Hodge, Barbara Kinley, Cathy Crawford, Mary McInnis and Karen Pugh, Plant 7; Walter Hayes and Barbara Jackson, Plant 8; Brenda M. King, Christine B. Stewart, W. Ray White, Rebecca S. York, Ronald Rogers and Linda Ramey, Plant 11; Sally Clark and Connie Stingley, Plant 19; Carl Stiles and Edwin Wade, Machine Shop; Geraldine Creasey, Sample Department; Georgia Kuykendall and John McKinnon, Plant 20; Emma Carpenter, David Davis, Mary H. Shaw, Gail Suitt and Mary H. White, Plant 22; Dorothy Alford, Linda Baker, Charles Bean, Hazel Bowman, Mattie Caudill, Elaine Davis, Ida Eaton, Taheedah El Amin, Gwendolyn Flood, Pat Harris, Brenda Martin, Shirley McKnight, Robert Meredith, Peggy Miller, Jewel Payne, Patricia Shelton, Steffni Westmoreland and Frances Whicker, Plant 3; and Beverly Cranford, Gerald Reeve, James H. Millis, Jr., R. Terry Kerr, James Halvorsen, David Ensley and Ronald Stroup, Administrative Office.

Social Security Increases

Effective January 1, 1982, the social security tax (FICA) went from 6.65% of wages to 6.70% of wages and the wage base maximum increased from \$29,700 to \$32,400. If your earnings are \$10,000 a year, for example, you will pay \$5.00 more in social security taxes than you did in 1981. That's about 10¢ more a week. Adams-Millis will, of course, match dollar for dollar the social security taxes you pay. Also this year, you can work and earn more without losing social security benefits. If you are now under age 65, you may earn \$4,440 without losing benefits. (Last year's maximum was \$4,080.) If you are between the ages of 65 and 72, your maximum without loss of benefits is \$6,000 in 1982 (as opposed to \$5,500 in 1981). Beneficiaries who are age 72 and over may earn any amount without losing benefits. The year 1982 also will see changes in Medicare coverages. The hospital deductible increases from \$204 in 1981 to \$260 in 1982, and the annual doctor's deductible amount increases from \$60 in 1981 to \$75 in 1982. The "deductible" amount is the cost of covered services in each benefit period not covered by Medicare. If you have questions concerning your social security or Medicare coverage, contact your personnel manager or your local social security office. (Remember, too, to call or visit your social security office at least three months before you plan to retire.)

PLANT LOCATIONS	Machine Shop High Point	Sample Department High Point	
Plant 1 High Point	Plant 4 Kernersville	Administrative Office High Point	Plant 19 Edmond, Oklahoma
Plant 2 Mt. Airy	Plant 6 Hickory	Plant 8 Franklinton	Plant 20 Archdale
Plant 3 Kernersville	Plant 7 High Point	Plant 11 Mt. Airy	Plant 22 Raeford