

Taste-Test

(Continued from page 1)

this group.

But another factor appears to be involved in the obese group's unenthusiastic response to the foods in the experiment.

Dr. Gerard J. Musante surveyed patients from the Dietary Rehabilitation Clinic and found that they get less pleasure and enjoyment out of most activities in life than people of normal weight. This included everything from sports and reading to eating.

Musante, assistant professor of community health sciences, and Dr. Schiffman recently presented a paper on their work with the diet clinic at a meeting of the Association for the Advancement of Behavior Therapy in Miami.

Musante began his behavior therapy work with the clinic in July, 1972.

He said that instead of telling overweight people they should have self-control and self-discipline, the behavior therapy groups try to teach the patients how to get more enjoyment out of life. Musante points out that frustration and boredom and lack of planning and goal-setting have something to do with overeating.

"We don't talk about cheating on the diet. That implies immorality. We talk about unstructured eating. People eat this way because they haven't planned their day. They have free time and are bored, so they eat," he said.

Besides teaching them to structure their time, Musante said he tries to teach them to deal with their frustrations, to become more assertive.

Cards on the tables where the dieters eat remind them "One minute, Utensils down, Slow down, 20 minutes." The idea is to teach them new eating behavior, he said. Wait a minute before starting, don't dive in to your food. Put your fork down between mouthfuls, don't keep shoveling it in. Try to take 20 minutes to finish a meal so that your body will have a chance to feel satiated.

McLeod Leaves Duke

Donald C. McLeod, assistant director of pharmacy, has left Duke to assume the position of director and assistant professor of pharmacy at Buffalo General Hospital in New York.

A native of Norman, N.C., McLeod came to Duke in 1971 as assistant director of the department. For the past two-and-one-half years he has been responsible for the management of all education and drug information activities. He has also been instrumental in establishing the new program of unit dose dispensing in the hospital.

In 1972 the pharmacy department underwent major administrative changes and appointed a second assistant director, Clyde Buchanan, to take charge of central dispensing, pharmacy purchasing, pharmacy production, intravenous admixtures, and the unit dose drug distribution system.

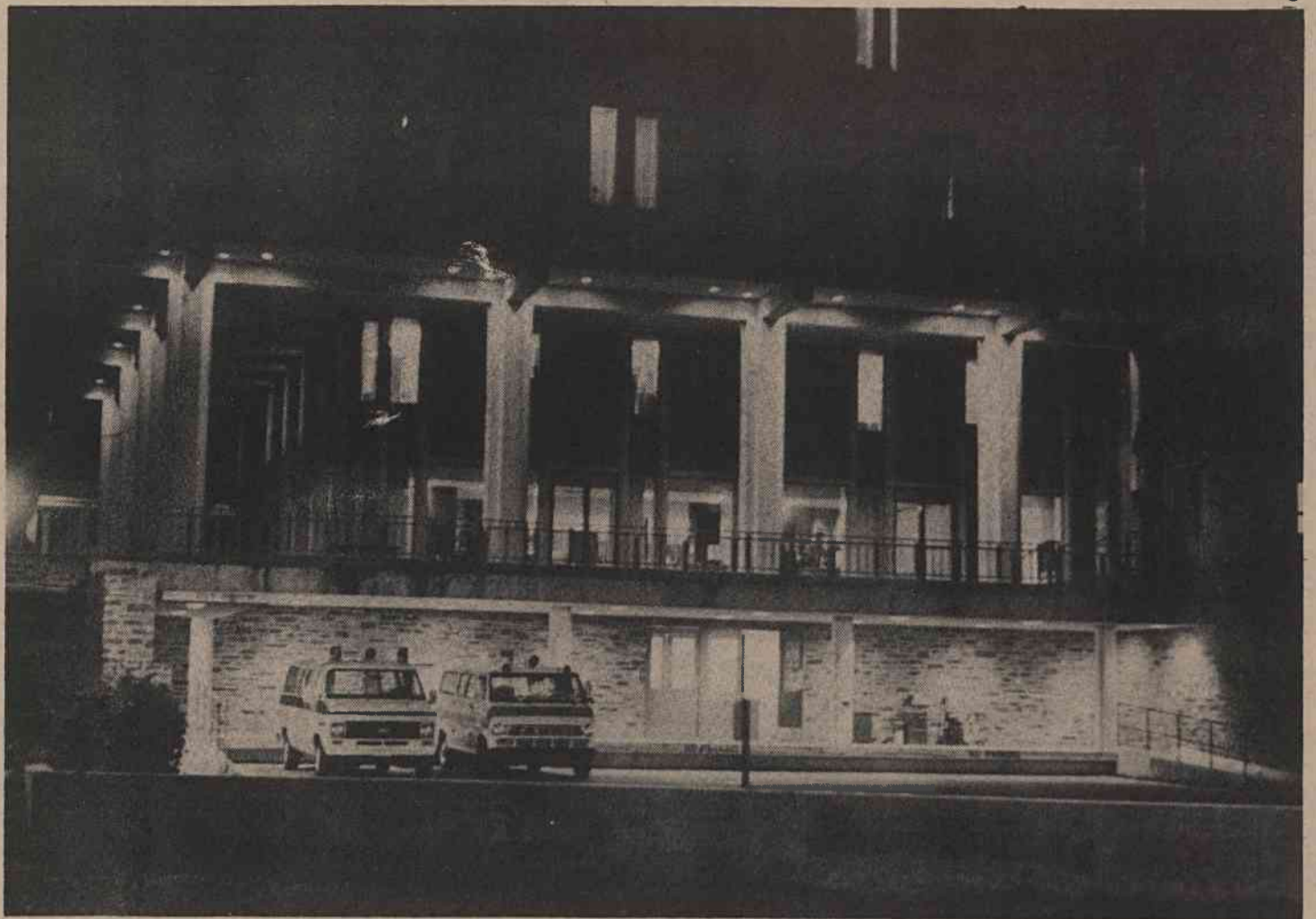
MAGIC KINGDOM CLUB

The 1974 membership cards for Walt Disney's Magic Kingdom Club are now available.

Membership in the Club provides substantial savings on ticket books, hotel accommodations, vacation cruises, and Hertz rental cars. The membership card is honored at both Disneyland in California and Disney World in Florida.

Cards and brochures, which detail scheduled events for the year, may be obtained at the Employee Relations Offices; 2106 Campus Drive, Ext. 6513 or the Employee Relations trailer, next to the Hyperbaric Chamber, Ext. 6037.

There are no fees or charges for membership.



IT'S 3 A.M., AND ALL'S WELL—The medical center's Emergency Room is where the action is at Duke in the middle of the night. On the evening this photograph was taken all was quiet, and the hospital was but a shadow of its daytime self. But while Durham and most medical center employees slept, a number of "night people" were at their posts as they are every evening, caring for patients and standing ready for service as the need arose. Next week the INTERCOM will recognize these people by publishing photos of them while they work. (Photo by David Williamson)

DUKE STUDIO THEATRE

The Duke Studio Theatre Workshop will present "Zoo Story" and "Snowangel" Feb. 8, 9, and 10 at 8:15 p.m. in Branson Theatre. Ken Blumenthal, who graduated from Duke last December, is directing "Zoo Story."

Written by Pulitzer Prize-winner Edward Albee ("Who's Afraid of Virginia Woolf?"), the play has received wide critical acclaim as a masterpiece of its time. It is a gripping study of the isolation of one man from society. Featured actors are freshman Richard Poole as Jerry and sophomore Jack Sirica as Peter.

Greg Rowe, a December graduate in drama of North Carolina Central University, is directing Lewis J. Carlino's play, "Snowangel." It is a moving story about a prostitute and a man who meet and share experiences by acting out their lovers' lives. In the cast are seniors Rich Ravits and Wendy Bartel.

For both "Zoo Story" and "Snowangel" the stage manager is Chris Carlson from Carrboro.

Ticket reservations may be made in person at Branson Theatre or by calling Ext. 3181.

Honorary Received

Dr. David C. Sabiston Jr., chairman of the Department of Surgery, has received an honorary Doctor of Science degree from the Hahnemann Medical Center and Hospital of Philadelphia.

The degree was conferred during an academic convocation there Jan. 25.

Sabiston also served as a visiting professor there, speaking on "The Coronary Circulation."

Lectured

Dr. John W. Everett, professor of anatomy, lectured at the University of Arkansas Medical Center under the sponsorship of the Department of Anatomy in their Distinguished Scientist-Lecturer Series.

The subject of his lecture, delivered on Jan. 17, was "Brain Mechanisms and the Ovarian Cycle."

Griffith, Danielson

Two Join Nursing Service

A new assistant director of Inservice Education and a new professional administrative assistant to the director of Nursing Service have been appointed at the medical center.

Ethel Griffith is new assistant director of Inservice Education, and Dorothy Danielson has joined Nursing Service Director Wilma Minniear in the professional administrative assistant post.

Ms. Griffith's responsibilities will include identifying areas of need for professional growth on the nursing staff and helping to keep nurses abreast of new developments in nursing techniques, in addition to assisting with the administrative duties of the division.

Ms. Danielson has begun working to set up a quality assurance program for nurses who are directly involved in patient care. This program should allow nurses to measure more accurately the quality of the services they are providing.

After receiving her B.S. in nursing from the University of North Carolina in

1965, Ms. Griffith worked as a charge nurse at naval hospitals in Newport, R.I. and Albany, Ga. and head nurse on the Intensive Care Unit at Alameda Hospital in Alameda, Calif. She returned to UNC to earn an M.S.N. in 1971 and for the past two years she has taught in the undergraduate nursing program at Carolina.

Mrs. Danielson received a nursing diploma from the Swedish Covenant Hospital in Chicago, the B.S.N. degree from Boston University and an M.S.N. in 1959 from Columbia University in New York.

After serving as staff nurse at various hospitals in Chicago, she worked as director of nursing at Evanston Hospital in Evanston, Ill., special assistant to the director of nursing at Johns Hopkins University in Baltimore, Md. and, prior to coming to Duke, director of the continuing education program in nursing at UNC in Chapel Hill.

Professional News

Attend Meetings

The following members of the Hematology Division, Department of Medicine attended the American Society of Hematology Meeting in Chicago on December 1-4, 1973; Drs. Wayne Rundles, Harold Silberman, Donald Miller, Walter Davis, Harvey Cohen, Wendell Rosse, John Laszlo, William Kremer, Andrew Huang, Michael Entmacher and Thomas Hauch.

Dr. Donald S. Miller and collaborators and Dr. Andrew Huang and collaborators presented papers.

Dr. Rundles also attended the National Conference on Virology and Immunology in Human Cancer on November 29-30 and December 1, 1973 as chairman of the Program Committee.

President Elect

Dr. E. Everett Anderson, professor of urology, has been chosen president-elect of the Carolinas Urological Association. The election took place at the association's annual meeting in Pinehurst.

The association membership is made up of 157 urologic physicians in North and South

Carolina. Dr. James F. Glenn, chief of urologic surgery, noted that Anderson "is one of the younger members of the group and his election attests to the confidence and high esteem or our urologic friends."

Comments

Inservice Education

Don and Cynthia McCaskill announce the birth of a son, Craig Douglas, on Jan. 15.

Reporter: Mary Ann Dell

Speech and Hearing

Born to Mr. and Mrs. Kerry Sipe, Tavis Winton, on Sept. 13, Mrs. Sipe is an audiologist. . . .New faces are secretary Jean Holliday, registrar Viola Pearson and audiologist Linda Sipe. . . .Helen Hall is the new office manager, Kathy Kirkman is the new appointment and file secretary and Nicki Mulford resigned to take a position in Kalamazoo, Michigan.

Reporter: Mary Painter

