

New depths to be explored

(Continued from page 1)

Information gathered from the study and those that will follow it is essential for diver safety as the search for undersea oil intensifies, he added.

Wet and dry

Divers will be able to pass back and forth between wet and dry environments because only the cylindrical portion of the new chamber — known as the "wet pot" — will contain water.

Dr. Sigfred Linderoth, professor emeritus of mechanical engineering at Duke and a consultant to the laboratory, made the initial design of the unit.

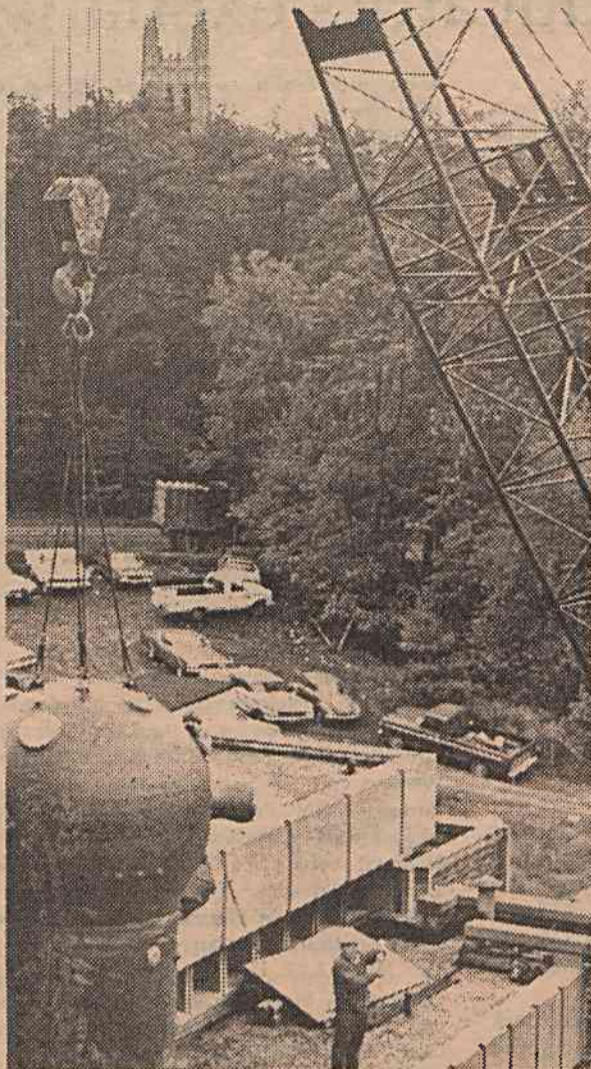
He said the Southwest Research Institute of San Antonio, Tex., completed the final design and welded and tested the chamber over the past 12 months. The Lukens Steel Co. of Coatesville, Pa., fabricated individual steel components.

Expandable

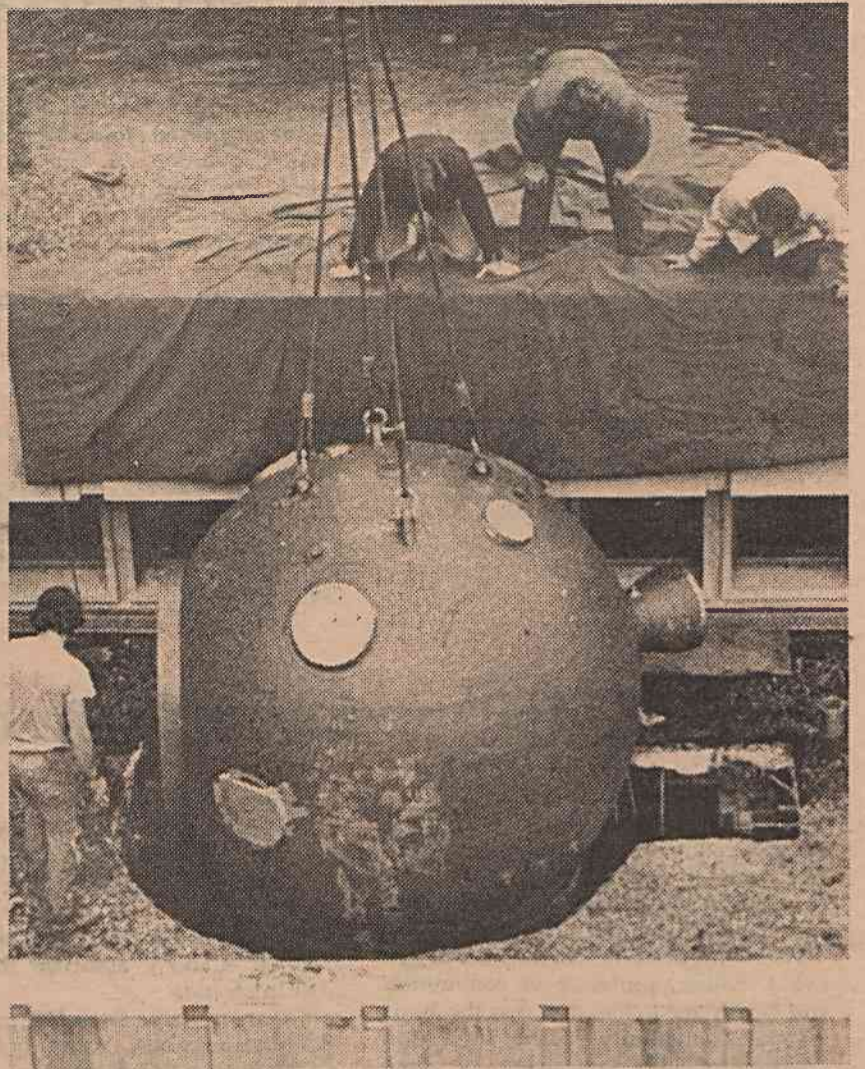
Because the chamber will expand under pressures of up to 1,600 pounds per square inch, it had to be mounted on steel rails so that it can move slightly, Linderoth explained.

The total cost of the project is \$340,000. The Department of the Navy, the Richard King Mellon Foundation and the National Oceanic and Atmospheric Agency have committed \$150,000, \$100,000 and \$50,000 to it, respectively.

Bennett said commercial diving companies and other sources have contributed the remaining \$40,000.



TIGHT SQUEEZE—Dr. Sigfred Linderoth demonstrated the benefits of careful measurement and mathematics as the chamber cleared a lip on the laboratory's upper roof with less than an inch to spare and fit



perfectly through a keyhole shaped opening. A lingering rain that had postponed installation for two days failed to dampen the appreciation of those who watched those who worked.

TV show postponed

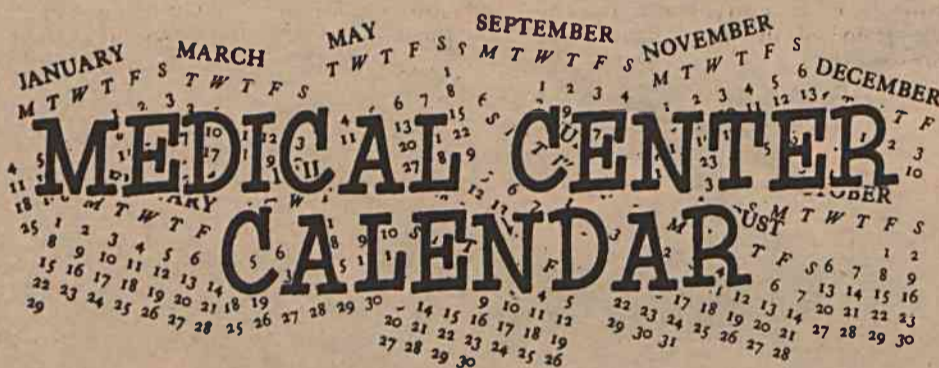
The one-hour TV special on breast cancer featuring 11 Duke people, which was to have been shown this past Monday was postponed because of a network special.

It has been rescheduled for this Monday, Oct. 31, 10 p.m. on WTVD (Channel 11).

Time to turn back sands of time

"Fall back, spring forward" is the formula given for remembering the changes between daylight time and standard time.

Translated into practical terms, this means that you will get an extra hour to sleep tomorrow night, since the nation changes back to standard time Sunday morning when 2 a.m. becomes 1 a.m.



October 28-November 4, 1977

The Medical Center Calendar lists lectures, symposia and other medical center activities. Notices should be sent to Box 3354, Hospital, no later than one week prior to publication. If last minute scheduling makes it impossible to send a written notice in time, please call 684-4148.

Friday, October 28

- 12:30 p.m. Biochemistry Seminar. Dr. M. Daniel Lane, Dept. of Physiological Chemistry, Johns Hopkins University, "Hormonal Control of Fatty Acid and Lipoprotein Synthesis by Liver Cells in Culture," Rm 147, Nanaline H. Duke Bldg. Coffee at 12:15 in the lobby.
- 1 p.m. Network for Continuing Medical Education (NCME). Programs on "Six Problems in Sexually Transmitted Diseases," "Defining the Standard of Care" and "Pregnancy and Diabetes: A Team Approach for a Viable Neonate." View in Rms M405 and 2031 at Duke and Rms D3008, C6002 and C7002 and Bldg 16 at the VA Hospital.

Saturday, October 29

- 10 a.m. "The Making of the Family Physician," sponsored by the Forum for Primary Care and the Duke Family Practice Club. Durham County General Hospital aud.

Monday, October 31

- 12 noon Pathology Research Conference. Dr. D.B. Hackel, professor of pathology, "Studies of Cardiovascular Disease in Myocardial Infarction," Rm M204.

Tuesday, November 1

- 9 a.m. U.S.-Poland Symposium on Medical Education, Medical Center Board Rm. Continues through Sat. See article beginning page one for complete schedule.
- 4 p.m. Durham Advisory Board to the hospital, Admin. Conf. Rm.

Wednesday, November 2

- 1 p.m. NCME. Two part presentation on "A Clinical Approach to the Major Motor Disorder of the Esophagus." Part 1, "Gastroesophageal Reflux: Symptomatology and Investigation;" part 2, "Gastroesophageal Reflux: Medical and Surgical Management." Also, program on "Informed Consent: Malignant or Benign." See Fri., Oct. 28, for viewing areas.
- 7:30 p.m. Issues in Health Care. Dr. Allen Dyer, assistant professor of psychiatry and community and family medicine, "A Psychiatrist Looks at the Physician," Amin. Conf. Rm.

Thursday, November 3

- 8 p.m. Trent Society. Dr. Sally Smith Hughes, "The Virus: A History of the Concept," History of Medicine Reading Rm, Sealey G. Mudd Bldg. Please call 684-3325 if you plan to attend.
- 8:15 p.m. Roundtable on Science and Public Affairs. Rep. Ray Thornton (D-Ark.), "The Congressional Dilemma — Promoting Free Scientific Inquiry while Protecting Public Interest," Gross Chem. aud.

VA line discontinued

The tie-line between Duke and the VA Hospital will be discontinued Tuesday (Nov. 1) because new equipment makes the line unnecessary.

"The tie-line extension, 684-2441, was established to provide assured access to the VA hospital switchboard during a time when both Duke and the VA switchboards were obsolete or overloaded," according to Kenneth E. Wheeler, assistant administrative director of the hospital.

"Since this time, Tel-Com has installed a new, technically advanced main switching station and other Federal agencies have been removed from the VA switchboard," Wheeler noted. "Thus, the technical need for the tie-line no longer exists."

Callers may reach the same switchboard by calling the main VA Hospital number, 286-0411.

Playwright's story told in photo exhibit

The first part of a photographic exhibit on Bertolt Brecht is on display in the gallery of Perkins Library through Monday. Part two will be displayed Nov. 1-11.

The exhibit is sponsored by the Department of Germanic Languages and Literature in cooperation with the Goethe Institute of Atlanta.