

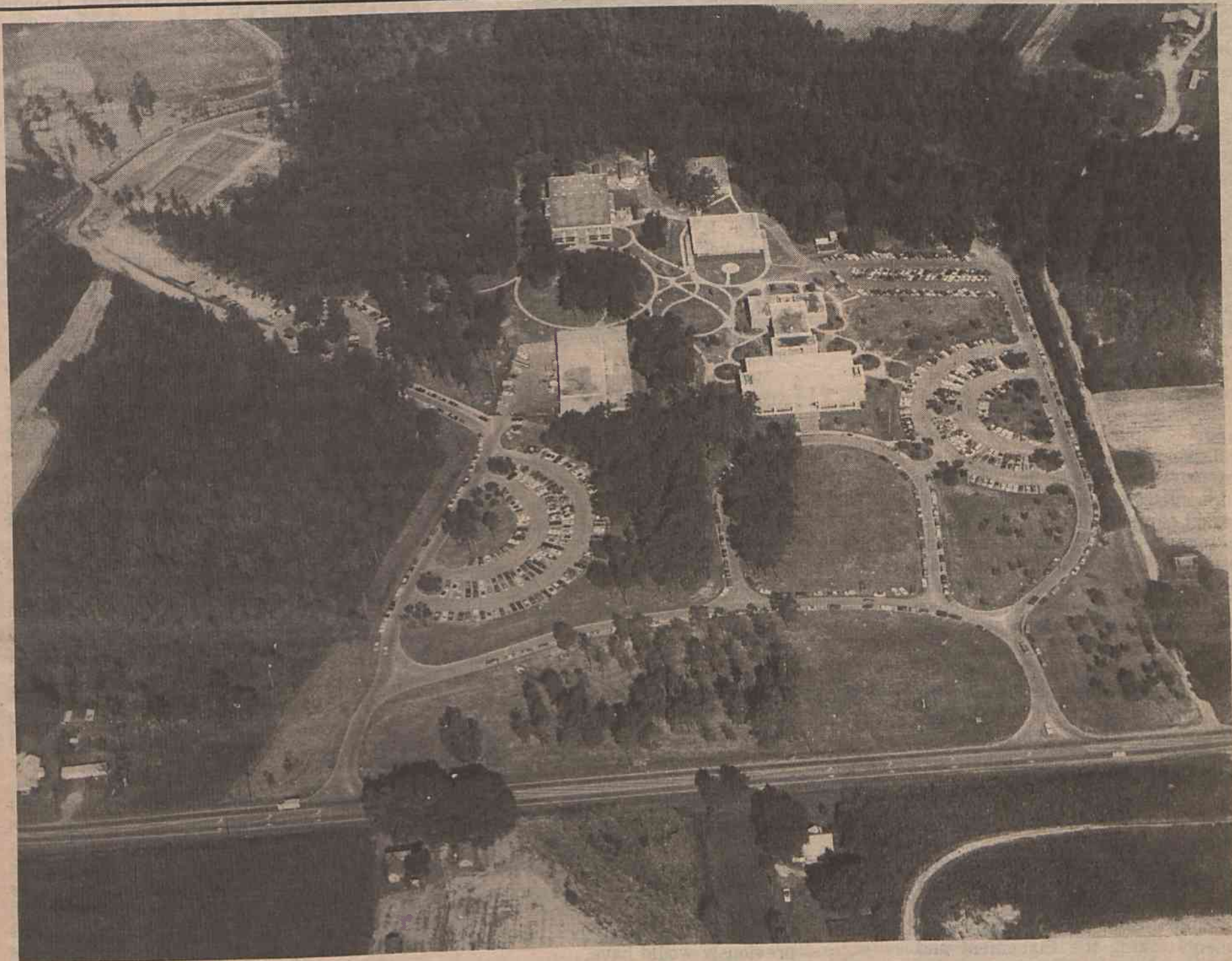
RAM'S HORN



VOL. II NO. 2

SOUTHEASTERN COMMUNITY COLLEGE

NOVEMBER 20, 1975



Larger Enrollment Causes Problems

This year SCC had a 28 percent enrollment increase. There are 1,709 freshman attending SCC and only 424 sophomores. These 2,133 students have found themselves on a

campus that is not totally prepared for them. There are several major problems concerning enrollment that effect not only students, but faculty also. The instructors in

the college parallel and technical programs have freshman overloads that are crippling their teaching time and the student's privilege of having special attention. Southeastern prides itself in having a terrific student - faculty relationship, but if this situation continues this specialty may slowly diminish.

Another problem is parking. The students and faculty can help this situation by forming car pools. New parking lots are in the planning stage now, but do not look for any assistance from this

Continued on page 4

Smile - Gotcha!

Be prepared. As you go through the registration line on Tuesday, December 2, 1975, you will find a spot to sit down and rest a minute. But don't close your eyes! Say cheese, and before you know it you'll have your picture taken. These pictures will be used in the 1975 - 76 edition of Ramblings, the yearbook here at SCC. Each student will also be able to purchase color prints of his or

her pictures at a very reasonable price. For those students who pre - registered, but have to go pay fees on December 2, the photographer will be near the place to pay. For those who have already pre - registered and paid fees, the photographer will be on campus again on Wednesday, December 3, 1975 - the first day of classes. Watch the Ram - o - gram for further details.

SCC Goes To Jail

S.C.C. has been actively working with the Brunswick Correctional Unit in support of a physical fitness program for the inmates. There are 164 inmates out of which 78 have signed up for the program. The units schedule has seven P.E. classes each week. Harry Foley, Southeastern P.E.D. instructor teaches all the P.E. courses, and he also teaches a health course (2008) on personal hygiene taught twice a week.

The P.E.D. classes give the inmates an opportunity to let out their frustrations. This really shows in their use of the equipment, which is worn, not broken. The inmates usually repair the equipment when it is broken. Most of the inmates show a lot of interest in the program, which in turn gives them some experience in teamwork. Mr. Foley feels that teaching them the rules of the

game and working together as a team will help them in their return to society.

To encourage the inmates, Mr. Foley has set up championships matches which are held each quarter. The winners are awarded a trophy.

S.C.C. has supplied the unit with 400 lbs. of weights, one dozen badminton rackets, a half dozen softball bats, 3 pingpong tables, and 3 volleyballs. S.C.C. has supplied the furnishings for a classroom trailer and plans to provide the labor to wire the unit's new vocational building. The new building will house a number of programs, including ceramics and small engine repairs.

The units are scheduled also to include Pre. Voc. courses I and II taught by Raymond Best. There is a G.E.D. and A.B.E. program taught by James Prevatte and James Davis.

Wayne Bowen