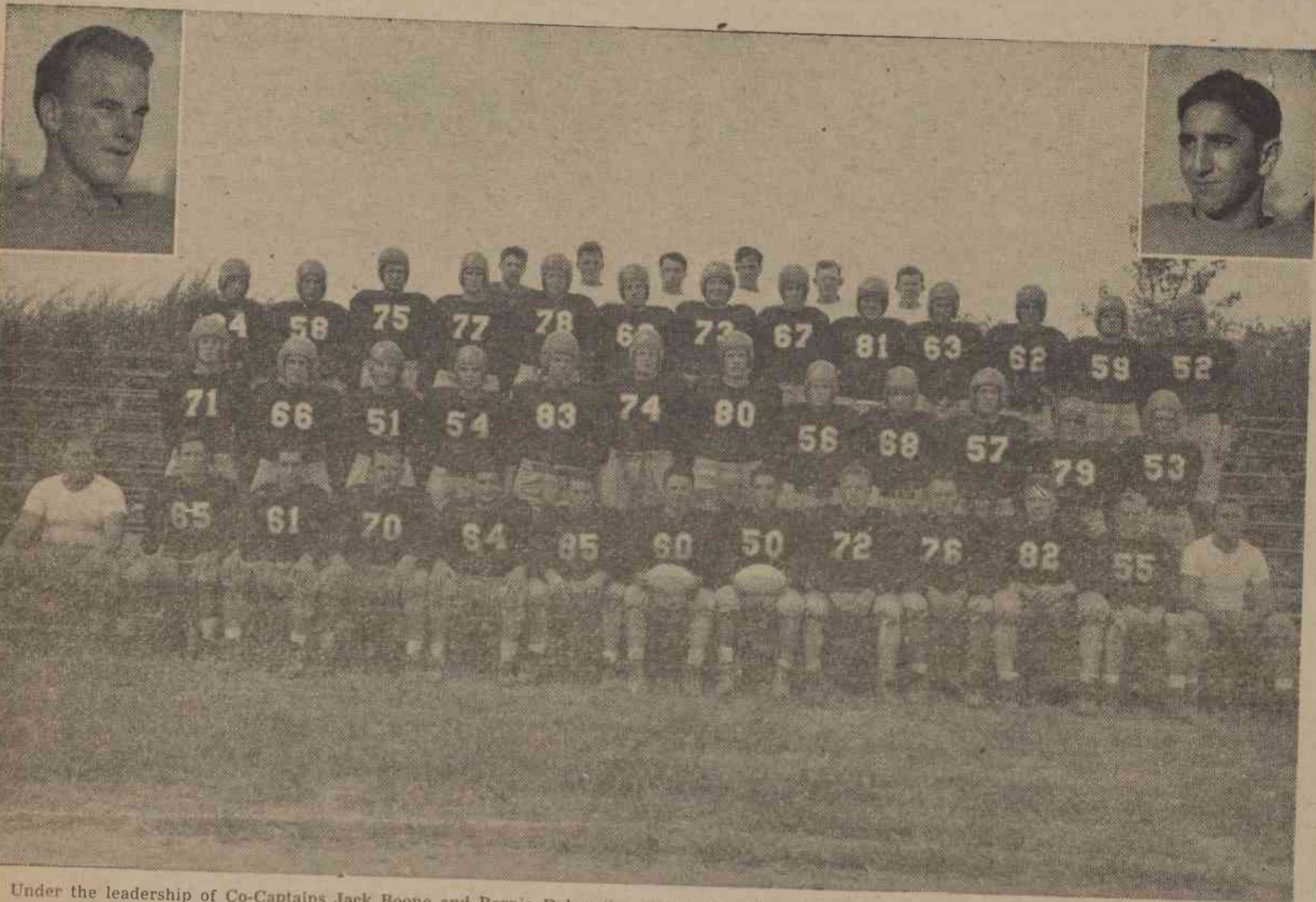


HIGHLIGHTS OF THE ELON YEAR IN PICTURES



Under the leadership of Co-Captains Jack Boone and Bernie Daher (in sets) the Christian Cannonade marched through North State Conference competition with an unblemished record. The climax of the season came when the boys trampled Catawba, 8-7, for the championship.



With the opening of school in September, the freshman class officers were elected. Shown above are Charlie Jones, President; Harpo Withers, Vice-President; Jeanne Hook, Secretary; and Tex "B.D." Lisman, Treasurer.



Despite the loss of two of its mainstays, Jack Gardner and Preston Towns, the basketball team, under the leadership of Captain W. L. Hobson, was a strong contender for the North State Conference Crown. Its record includes wins over every team in the conference, one of them being High Point's only defeat of the season.



Greatest surprise of the year was the resignation of Coach 'Horse' Hendrickson in February. Hendrickson left after four and one half years on the Elon campus to take a position on the coaching staff of the University of Pennsylvania.



Shown above in the library stacks during the first practice air raid drill are a group of Elon students. Under the direction of Dr. Collins, the Air Raid Organization did much toward making the campus a safer place to live.



Greatest bereavement of the year was the death of Dr. John Urquart Newman. Dr. Newman had been a member of the Elon faculty for fifty-one years.



With the lowering of the draft age came the registration of practically all of Elon's stronger sex. Led by the President of the Student Body, Kenneth Utt, a group is shown above putting their name on the dotted line. Standing, left to right, they are Fred Gilliam, Tex Lisman, Roy Mansfield, Royall Spence, Howard Culbreth, and Joe Tom Stevens.



Best strategist in the spring elections turned out to be John Pollard, whose "Honest John, the voter's friend" slogan netted three offices. Editor's note: (Picture printed because Pepsi-Cola ad did not arrive.)