


Christians Tackle Lenoir Rhyne At Hickory Saturday Night

FRESHMAN STANDS TALL AS FLANKER



Tony Carcaterra, a towering freshman from Inwood, Long Island, N.Y., stands taller and taller out on the left flank of the Elon line as the season nears its end. The big 6-foot 4-inch youngster, who tips the scales at a rugged 200 pounds, really hit his stride against the Apprentice School eleven last weekend when he grabbed three forward passes for a total of 33 yards. One of the three catches came in the end zone to complete an 18-yard touchdown play. The big freshman also contributed a brilliant diving catch in Elon's 19-6 victory over Western Carolina the preceding week.



Walking The Chalk-Lines

By BILL WALKER

Never let it be said that this year's Fighting Christian football team is one to break a tradition, the tradition of winning the Elon Homecoming game. Certainly the Christians showed no symptoms of such a thing, for they started from the opening moments of the Homecoming battle to capitalize on every "break," and they did just that all night as they moved almost at will against the Western Carolina team.

Richard Bradham seemingly found himself at quarterback and teamed with his brother Whitney, and with Tom Shepperson, Kerry Richards and Sonny Martin to put on as fine a backfield performance as Elon fans can remember in many a day.

The Elon line, which saw three new starters against the Catamounts, played its best game in keeping the Cat backfield in check most of the night. Only exception was for a few moments in the second quarter when Western Carolina pulled a double reverse that caught the entire Christian squad off guard. The play carried twenty-one yards to set up the Catamount touchdown.

Myron Winslow, who left Elon to enter naval air training, has recently qualified as carrier pilot upon completion of a specified quota of take-offs and landings on one of the big Navy flat-tops.

Elon Eleven Is Winner Over Western Carolina

By BILL WALKER

After going winless in their first six starts, Elon's Fighting Christians came out of their slumber and out of the North State Conference cellar all in one motion as they rumped to a decisive 19 to 6 victory over the Catamounts of Western Carolina before 1,500 Homecoming fans in Burlington Memorial Stadium on Saturday night, October 29th.

The Christians, who have seldom if ever lost a Homecoming game in the modern era, were a determined crew as they lined up to face the Catamounts. They were determined to keep the winning tradition alive.

Richard Bradham, regaining the firm he displayed at The Citadel earlier in the season, guided and paced the Christians to victory. He quarterbacked what seemed to be a perfect game, scored two of

Elon's touchdowns and handed off to Kerry Richards for the final and clinching tally.

Elon threatened from almost the initial play of the game as the Western Carolinians fumbled on the first play from scrimmage. Glenn Varney recovered for the Christians on the Catamount thirty-two, and Elon drove to the one-foot line before losing the ball on downs.

HOW IT HAPPENED

Elon	Western Carolina
10	7
217	158
10	10
207	14
3	2
2	0
39	0
246	149
1	1
4	5
28.5	33.2
116	52
1	3
49	60

SCORING SUMMARY

Elon	7	6	0	6-19
W. Carolina	0	6	0	6-6

Elon Touchdowns — R. Bradham 2, Richards. Points After — Kinsley (placement), Western Carolina Touchdown — Poindexter.

Girls' Teams Seek Volley Ball Honors

Five teams are battling for honors in the girls' volleyball tournament, now being sponsored by the Women's Athletic Association, with Second Floor West gaining an early lead in the round-robin play. The final honors will be settled in a single-elimination tournament, which is under the management of Janet Crabtree.

Officials for the games in tournament play include Betty DeLancey, Shirley Presnell, Margaret Stafford, Elizabeth Shoffner, Marquita Robertson, Mary Ann Turner, Faye Weaver and Doris Gaddis. The participating teams and their players are listed below:

THIRD FLOOR WEST — Doris Gaddis, captain, Kathryn Lambert, Sara Shelton, Dot Mauldin, Norie Luce, Elizabeth Goodway, Mary Ann Turner, Marquita Robertson, Nancy Williamson and Faye Weaver.

SECOND FLOOR WEST — Mary Wade Smith, captain, Joyce Myers, Ruth Lloyd, Nell Clark, Ruth Hicks, Pat Coghill, Jean Coghill, Helen Blanchard, Martha Langley, Lannie Wright and Marie Stone.

LADIES HALL — Louan Lambeth, captain, Betty Flynn, Barbara Pond, Ruth Douglass, Charlotte Williamson, Mary Hawkins, Shirley Womack, Bobbie McBane and Betty Boswell.

DAY STUDENTS — Polly Payne, captain, Katrina Frye, Onita Frye, Betsy Watson, Betty Hedgepeth, Joyce Askew, Rosalind Toney, Dorothy Whitson and Barbara Spinks.

DELTA UPSILON KAPPA — Joyce Perry, captain, Janet Crabtree, Carolyn Abernathy, Frances Knight, Ann Dula, Evelyn Fritts, Sis Beckwith, Betty Franks, Betty Sue Ammons, Pat Chrismon, Betty DeLancey and Jackie Williamson.

tween two of the Christians who have stood out in backfield play all season . . . Whitney Bradham and Sonny Martin. Whitney ran back a punt 50 yards in the second quarter that eventually set up an Elon score, quite definitely the finest run of the year for the Christians. With good blocking and a lot of shiftness and drive, for which Whit has been known this year, he appeared a sure bet to go all the way until he slipped and fell while evading a would-be tackler. Sonny rates for his fine all-round offensive and defensive work in the backfield throughout the Western Carolina game, and more especially for the 14-yard gallop which set up Elon's "insurance touchdown" in the final quarter. On this run six of the Catamounts had their hands on him at one time, but they could never bring him down until he reached the two-yard line and set up the score.

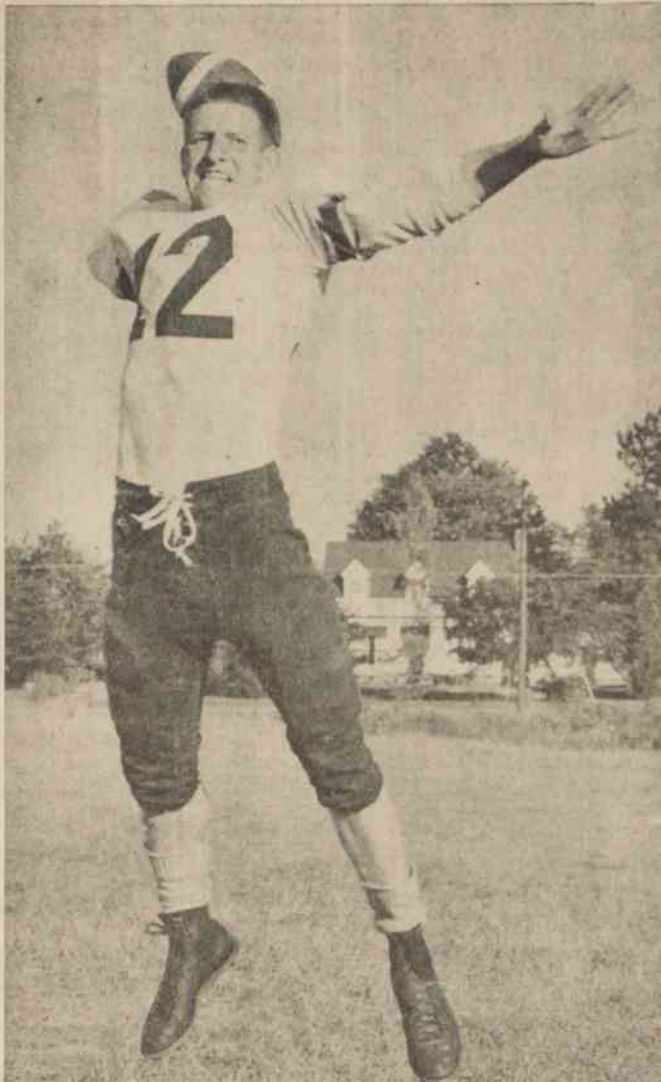
Women's Sports Council Formed

The council of the Women's Athletic Association, which assists Mrs. Jeanne Griffin in direction of the girls' athletic program on the campus, is composed of representatives from each of the four sororities, members from both West Dorm and Ladies Hall and a member for the Day Students.

Representatives who make up the 1955-56 council are Shirley Presnell, Tau Zeta Phi; Frances Knight, Delta Upsilon Kappa; Ruth Lloyd, Beta Omicron Beta; Polly Payne, Pi Kappa Tau; Jane Driver, Ladies Hall; Kathryn Lambert, Third Floor West; Martha Langley, Second Floor West; and Betsy Watson, Day Students.

It was a well-played game for the Christians, who featured the Bradham brothers, along with Sonny Martin, Kerry Richards and Tom Shepperson in the backfield, and the play of J. B. Vaughn, Pat Cafasso, Tony Carcaterra and Glenn Varney in the line, along with the linebacking of Lynn Newcomb and Home Hobgood.

QUARTERBACK IS MUCH IMPROVED



Richard Bradham, sophomore quarterback from Sumter, S.C., has seemingly hit full stride in the Christians' two most recent games, which netted decisive victories over the Western Carolina Catamounts and the Apprentice School Shipbuilders. The younger of the two Bradham brothers found the magic touch with his passing in those two games and used a whip-lash arm to roll up more passing yardage in the two contests alone than in all of six preceding games this season. Against the Catamounts and Shipbuilders he completed 9 out of 15 passes for 158 yards, two of the tosses against Apprentice School being good for touchdowns. In six earlier games he had completed only 11 of 42 passes for 140 yards. The Elon quarterback also plunged for two TDs against Western Carolina on keep plays.

Sigma Phi Sweeps Honors In Intramural Track Meet

The Sigma Phi Beta tracksters made a runaway affair of the annual Fall Quarter intramural track meet, which was held on Monday afternoon, October 24th, with Dick

Elon Football

Elon 0, Miss. Southern 39.
Elon 18, The Citadel 26.
Elon 0, Appalachian 19.
Elon 0, East Carolina 13.
Elon 6, Newberry 19.
Elon 0, Catawba 19.
Elon 19, Western Carolina 6.
Elon 51, Apprentice School 7.

(Remaining Games)

Nov. 12—Lenoir Rhyne, away.

Nov. 19—Guilford, away.

Hargrave Downs Jay-Vee Eleven

The Hargrave Military Academy grid squad turned back the Elon junior varsity gridgers by a 25 to 0 margin in a game played on the Hargrave field last Saturday afternoon, November 5th. The defeat was the third in succession for the Elon youngsters, who fought Guilford to a scoreless tie in the opening game of the season.

The Elon Jay-vees, who found themselves stripped in mid-season when injuries forced wholesale promotions to the Christian varsity, were never able to muster any real offensive threat against the strong Virginia prep school outfit. Several of the players who participated in this game returned in time to play with the varsity in its sweeping 51-7 victory over Apprentice School that night.

Elon Seeks Upset Win Over Bears

Riding a two-game winning streak and beginning to look like the grid power that the Christians were supposed to be this season, Elon's grid squad will swing into the west on Saturday to battle the Lenoir Rhyne Bears in their twenty-seventh annual football game.

The Christians will have to enter the game as underdogs to the Bears, who are currently leading the North State Conference race and boasting a mark of six wins and a tie for the season, but the Maroon and Gold gridgers remember that they defeated the same Bear eleven last year and believe they can do it again.

The comparative scores made by Elon and Lenoir Rhyne against the same opponents this fall, generally favor the Bears, but the Christians rolled for a bigger margin over Apprentice School last week than did the Lenoir Rhyne outfit in its early-season game with the Shipbuilders.

PAST BRUIN SCORES

1921—Elon 39, Lenoir Rhyne 0.
1926—Elon 28, Lenoir Rhyne 6.
1927—Elon 7, Lenoir Rhyne 6.
1928—Elon 26, Lenoir Rhyne 6.
1929—Elon 13, Lenoir Rhyne 7.
1930—Elon 20, Lenoir Rhyne 7.
1931—Lenoir Rhyne won, score not recorded.
1932—Elon 7, Lenoir Rhyne 12.
1933—Elon 7, Lenoir Rhyne 0.
1934—Elon 13, Lenoir Rhyne 6.
1935—Elon 20, Lenoir Rhyne 0.
1936—Elon 38, Lenoir Rhyne 0.
1937—Elon 27, Lenoir Rhyne 6.
1938—Elon 14, Lenoir Rhyne 6.
1939—Elon 0, Lenoir Rhyne 10.
1940—Elon 8, Lenoir Rhyne 6.
1941—Elon 13, Lenoir Rhyne 0.
1946—Elon 13, Lenoir Rhyne 14.
1947—Elon 0, Lenoir Rhyne 13.
1948—Elon 0, Lenoir Rhyne 13.
1949—Elon 7, Lenoir Rhyne 19.
1950—Elon 13, Lenoir Rhyne 42.
1951—Elon 14, Lenoir Rhyne 48.
1952—Elon 7, Lenoir Rhyne 59.
1953—Elon 13, Lenoir Rhyne 27.
1954—Elon 14, Lenoir Rhyne 6.

The Christians hold an edge over Lenoir Rhyne in the over-all series, which dates back more than 30 years. The two teams met first in 1921, when Elon won 39 to 0, and the Christians continued to roll for victories through six consecutive games. Lenoir Rhyne finally broke through for wins in 1931 and 1932, but Elon claimed six more wins in a row before the Bears slipped in another victory in 1939.

The pre-war series closed out in 1941 with Elon holding a margin of 14 wins in 17 tries, but Lenoir Rhyne turned the table after World War II, beginning in 1946 and chalking eight straight wins. The Christians finally broke through for a 14 to 6 triumph last fall, and they will be going all out to repeat that win this weekend.

Quaker Contest Ends Grid Year

The annual Elon-Guilford grid battle, long scheduled as a Turkey Day classic, will be played on Hobbs Field at Guilford College on Saturday afternoon before Thanksgiving, bringing to a close the Christians' 1955 football campaign.

This 1955 battle, the thirty-third in a series that started back in 1919, renews one of the oldest small-college rivalries in all of Dixie, and Coach Varney's Maroon and Gold warriors will be seeking their twentieth victory of the series.

The records thus far show Elon with 19 wins, Guilford with 10 wins and three games that have ended in ties. The Christians won last year's game by a 20 to 13 margin in a thrilling battle staged in Burlington Stadium.