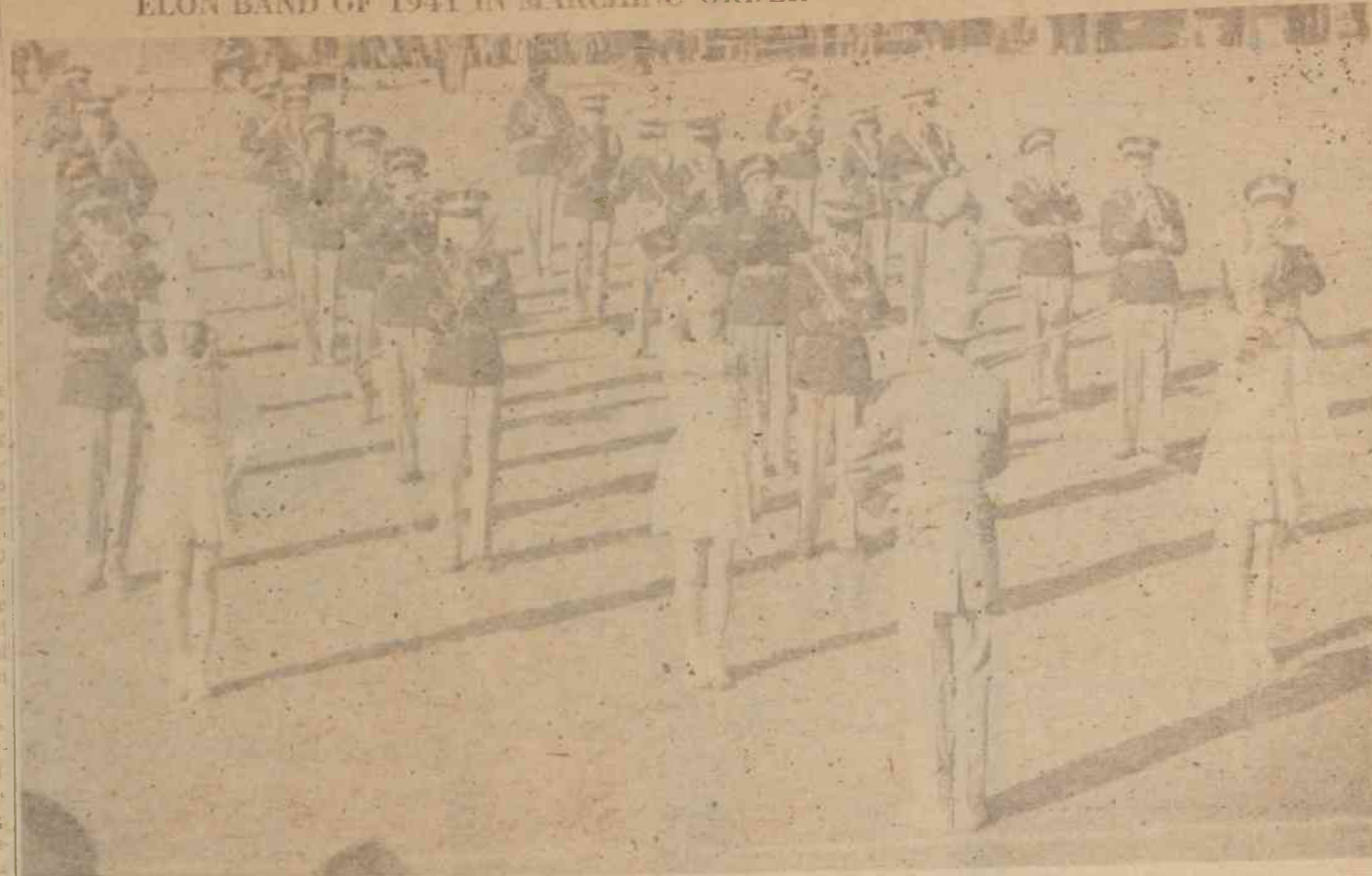


ELON BAND OF 1941 IN MARCHING ORDER AT CHRISTIAN GRID GAME



Indicative of the growth of the Elon College marching band in recent years is the above photo of the 1941 musical group, snapped by the roving photographer while lined up at the half-time of a Christian grid game that season. It is interesting to note that the picture was taken at the Elon Ball Park, where the football games were played that season. The park is now used only for baseball games. A brief count reveals that the band that fall included twenty-four musicians, plus the three majorettes and the drum major. Individual identification was possible only for Drum Major Ed Robertson, now with the Army Air Forces in England; and the three majorettes. Left to right, they were Millicent Brittain, who hailed from Asheboro, Emogene Thomas, of Burlington, and Carolyn McClenny, of Durham. All are reported to be married, but their present names are not known.

Elon Band Has Been Active Group

(Continued from Page Two)

pus. James White, Oliver Cook and Alfred Nelson were the only members whose names were available.

Walker also directed during the 1937 and 1938 years. The band made several trips with athletic teams, and this was the first period in which an Elon band was pictured in uniforms. Concerts were given frequently, but the outstanding concert of the season was rendered on the program of the Phi Psi's Annual Varsity Show. Names for the most part were not available, but George Cameron and Harold Hilburn were known members of this band.

The Maroon and Gold band of 1939 named Charles Hamrick as student director. Led by drum major Evelyn Lilley, the Elon musicians made a striking picture during the half-time periods of the ball games. They performed during the basketball and baseball games as well as at football games and gave several concerts during the year.

Something entirely new made a very favorable impression on the Elon campus during that year also. A college orchestra, under the direction of Charlie Hamrick, began playing for the fraternity and sorority parties and also for outside engagements. Included in the group were Howard Brown, Louis Hubbard, Tommy Heritage, Jimmy Parker, Ben Stevenson, Jimmy Lightbourne, Buddy Hayden, Charlie Hamrick, Bob Truitt, John Pollard, Al Mastrobatisto and Fred Gilliam.

The band of 1940 was directed by Howard Brown, student director, and led by Ed Roberson, drum major, and Evelyn Lilley, majorette. This band also played at varsity athletic contests, special campus functions and regularly scheduled concerts.

Another student group, the Collegiate, under the direction of Louis Hubbard, played for social functions on the campus and elsewhere throughout the state. The players were selected for their musical ability and for their love for modern music. This combo received much praise for its smooth performances and became known as one of the best college orchestras in this locality. This was entirely a student organization and was not connected with the regular music department of the college. Members of that group included Louis Hubbard, director, Howard Brown, Billy White, George Bullard, Bob Truitt, Fred Gilliam, Buddy Hayden, Farvis

Herring, Ben Stevenson, Joseph Hamrick and John Pollard.

Elbert F. Rhodes, director in 1928 and 1929, returned to the Elon campus to direct the Maroon and Gold musicians in 1941, and he was the first professional band director in several years. This band formulated many new and novel drill formations which were new to this particular area.

Rhodes was considered an excellent director, having turned out good bands at Burlington High School. Schools under his direction had received wide acclaim at such appearances as the National Tobacco Festival at South Boston, Va., the Tobacco Festival at Wilson, and at numerous State Music Contests and American Legion Conventions.

The band accompanied the football teams to Lenoir-Rhyne, High Point, Catawba and Guilford games which were played away from the Elon campus that year. The marching band was under the direction of drum major Ed Robertson, his third year in this capacity. Drum majorettes were

Carolyn McClenny, of Durham, Millicent Brittain, of Asheboro and Emogene Thomas, of Burlington.

(To be continued)

A.A.C. GAME

(Continued From Page Three)

the Christians were able to slash the spread to three points.

Crump was top man for the Elon cagers with 21 points, including eight field goals and five for six from the free throw line. This ran Crump's free-throw mark to 66 of 71 for the year. Pushing Crump for Elon honors were Atkinson with 20 and Juratic with 19 points.

The line-ups: Pos.—Elon (77) A. C. C. (81) F.—Atkinson 20 Widgeon 26 F.—DeRita 11 Whaley 9 C.—Juratic 19 Marley 9 G.—Crump 21 Williams 8 G.—Stout 4 Underwood 23

Half-time A. C. C. 46, Elon 36. Elon subs — Stone 2, Turner, Bulla, Rickover, A. C. C. subs — Ward 2, Hutchins 2, Hester 2, Baker.

FFV's And Day Students Lead In Girls' Cage Race

Large Group Is Initiated In Sigma Mu

Those murderous looking paddles circulating about the campus last week were evidence of the Sigma Mu Sigma initiation, which was then in progress, ceremonies which will end with full membership for eleven new Sigma Mu Sigmas on February 5th.

The fraternal group, which has had an active chapter on the Elon campus for the past eight years, is affiliated with the Masonic Order. It is a service group in purpose, but it also offers social activities for its members.

Those now going through the ceremonies are Prof. John Graves, of the Elon College religious faculty; James Curles, of Roxboro; Franklin Dover, of Burlington; Alfred Roberson, of New Bern; James McCauley, of Burlington; Wynn Riley, of Columbia, S. C.; Mackie McLaughlin, of Burlington; Linwood Hurd, of New Britain, Conn.; Mack Oakley, of Burlington; Charles Howell, of Townsend; and Bill Oliver, of Burlington.

ATKINSON RECORD

(Continued From Page Three)

against A. C. C. and to set a new total game mark against Hampden Sidney on Friday. He will then set a new mark each game he plays after that time.

Two others of Elon's individual career marks belong to Kendall, one for a career total of 1,653 points and another for 644 field goals in four seasons. Don Hathcox has the single season scoring mark of 607 points and for 248 field goals in a single season. Atkinson already holds the single season mark of 161 free throws, the single game point record of 29 points and the mark of 18 field goals in a single game. That mark of 18 field goals in a single game is also the Conference mark, shared by Atkinson and Lenoir-Rhyne's Raeford Wells.

The Elon team records in scoring are 2,869 total points for a single season, a mark of 1,060 field goals in a single season, a record of 749 free throws in a season, a mark of 124 points in a single game, one of 44 field goals in a single game and one of 36 free throws in a single game.

In the thick of the best girls' basketball race of recent years, the FFV's (First Floor of Virginia) and the Day Student lassies were breezing along undefeated at the head of the pack last weekend. Only two days of play remained this week before the titular tournament.

The FFV's held half a game margin on the Day Students as this final week started, showing a 4-0 mark while the Day Students had a 2-0 mark. The two teams had not met prior to this week, and the title promised to ride on their meeting. Delta U was riding in third place with a 3-1 mark, trailed by the White Socks with 3-2, while the Married Mamas from Vet's Apartments and the Western Ladies of West Durham each had 0-4 records.

The program, directed by Mrs. Jeanne Griffin, head of girls' physical education, has drawn participation by more than 70 girls this season, by far the largest group to play in recent years. The rosters of the six teams follow, teams being listed in order of the standings:

FFV's — Marlon Glasgow, Katie Langley, Lannie Wright, Carolyn Adams, Carol Cox, Patsy Waller, Lib Shoffner, Betty Flynn and Betty Lou Booth.

DAY STUDENTS—Shirley Turner, Onelta Frye, Katrine Frye, Pam Dofflemeyer, Dot Keck, Peggy Allen, Kay Hughes, Linde Simpson, Dottie Neal and Betty Fogleman.

DELTAT U — Frances Carver, Joyce Perry, Norie Luce, Martha Rohart, Marquita Robertson, Evelyn Fritts, Pat Chrismon, Jackie Williamson, Janet Crabtree, Vivian Franks, Faye Weaver, Dot Perkins, Shirley Sorrell and Jean Cannady.

WHITE SOCKS — Martha Langley, Louann Lambeth, Lena Brame, Betty Jean Roberts, Donnie Holmes, Pat Coghill, Carol Earle, Jean Coghill, Sara Shelton, Doris Gaddis, Retta Godwin, Ruth Geary, Billy Faye Barrett, Ann Tart and Becky Murdock.

MARRIED MAMAS — Mona Atkinson, Phyllis Gibson, Mary Sherrard, Pat King, Penny Urdyke, Nancy Gough, Hallie Hall, Betty Crockett, Annie Maynard, Lucy Beamer, Elsie Thomas, Ethel Kendall, Jeannette Crutchfield and Donna Murrell.

WESTERN LADIES — Nell O'Connell, Sylvia O'Connell, Jane Burgess, Nancy Perry, Bobby Jo Everett, Pat Andrews, Angie Kelly, Ann Minter, Nancy Green, Mary Lou Overman and Lois Grizzard.

Two Unbeaten Fives In Boys Cage Leagues

Intramural basketball reached the end of the first half of the last week, with the Veterans and the Footbrawlers remaining undefeated giants in their respective leagues, but second half action should bring quite a bit of competition as teams in both leagues continue to reveal their talent.

In the Fraternity League the Veterans have compiled a 2-0 record as Mr. Bearsh and Mr. Hester have set the pace through the first half of play. Chief competition in that first half came from a fine Tidewater team and the rascals of Sigma Mu Sigma, along with an utterly unpredictable ITK squad which is capable of upsetting any team that has defeated it. Sigma Phi Beta and Kappa Psi Nu also possess talent capable of upsetting any of the higher ranked squads.

In the Dormitory League the Footbrawlers have continued to roll over all competition, with no signs of slowing up in the immediate future. Led by J. B. Vaughn and Harry Faust, the grid men promise to continue their domination of the league through the remainder of the season. Their best competition promises to come from Carlton House and North Dorm.

The league standings through last weekend are as follows:

FRATERNITY LEAGUE

Table with columns for Fraternity (W, I, A), Vets (5, 0, 100), Tidewater (4, 1, 100), ITK (3, 3, 100), Sigma Mu (2, 3, 100), Sigma Phi (2, 4, 100), Kappa Psi (0, 5, 100)

DORMITORY LEAGUE

Table with columns for Dormitory (W, I, A), Footbrawlers (5, 0, 100), Carlton House (5, 1, 100), North-Dorm (4, 2, 100), Carolina Hall (2, 4, 100), East Dorm (1, 5, 100), Day Students (0, 5, 100)

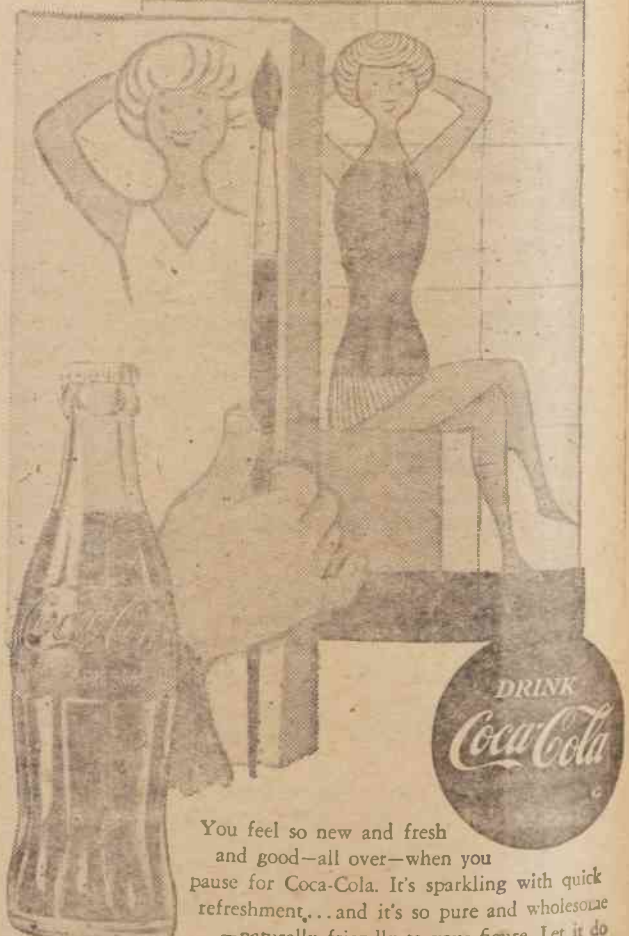
Scoring Figures For Cage Squad

Fourteen different players have figured in the scoring for the Elon Christians this season, according to figures compiled after last Saturday's victory over the Western Carolina Catamounts, with four of the players averaging 10 points or better in 15 games. The individual scoring records follow:

Table with columns for Player, g, fg, ft, tp. Includes Atkinson (15, 113, 89, 315), Crump (15, 99, 82, 230), Juratic (15, 84, 49, 217), DeRita (15, 39, 63, 14), Stone (15, 40, 35, 11), Turner (15, 11, 19, 4), Bulla (15, 10, 6, 2), Stout (11, 6, 13, 25), Carcaterra (12, 9, 6, 2), Rickover (7, 4, 2, 10), Way (5, 4, 0, 5), Hargrove (4, 2, 2, 0), Watts (3, 1, 3, 5), Robertson (3, 2, 1, 5), Other Players (3, 0, 0, 0)

ELON TOTALS 15 422 349 1213, OPPONENTS 15 369 306 1050

"Coca-Cola does something for you, doesn't it."



You feel so new and fresh and good—all over—when you pause for Coca-Cola. It's sparkling with quick refreshment...and it's so pure and wholesome—naturally friendly to your figure. Let it do things—good things—for you.

BURLINGTON COCA-COLA BOTTLING COMPANY "Coke" is a registered trade-mark. © 1956, THE COCA-COLA COMPANY

Advertisement for Circle G Drive-In Theatre. Program for 2 weeks from Jan. 30. Shows include 'The She Creature', 'It Conquered the World', 'Woman They Almost Lynched', 'Walk The Proud Land', 'Gentlemen Marry Brunettes', 'Ride The Man Down', 'Love Gun', and 'Coroners Creek'. Also mentions 'You'll Love Banko' every Saturday and Sunday.

Advertisement for Ford Florist. Spring Street next to Sellars, Burlington, N. C. C. L. "Red" Ford. Day Phone 6-1053, Night Phone 6-2043.

Advertisement for College Bookstore. 'GET the BOOKSTORE Habit'. Souvenirs, Dancing, College Jewelry, Refreshments.

Advertisement for Sellars Department Store. Headquarters for Elon Students, Burlington Owned, Burlington Managed.