



When WBBB broadcasts the next Elon College basketball game, a pretty little lady of the Whistler's Mother stripe will be in her rocker close by her set at Graham.

Mrs. C. L. Ezell, an animated 21, and her daughter, Mrs. Clara Steele, a former textile employee, keep up with the Fighting Christians with unexpected fervor. Mrs. Ezell is not much for studying her scores, but she reads the story in the Times-News.

Dee Atkinson is one of her all-time favorites. She might miss quoting his 18 field goals and 39 points in a single game against Western Carolina back in '35 as a mark that stood until the thunderbolt from Snow Camp, Jesse Branson, got to working on the record with 44 against Wofford this year, but she knows Dee to borrow the vernacular, scored a mess of points.

"Dawey Andrew was right good from last year," opines Mrs. Steele of another Snow Camper.

Mrs. Steele is partial to the home county players.

"Several of the boys on this year's team are from Alamance County, but some of them don't play much," Mrs. Steele says.

The distaff fans say with assurance that "the first five or six players on this year's team are all good," capable enough to hold their attention — and when you say ACC around Mrs. Ezell and Mrs. Steele, you'd best be speaking of Atlantic Christian College. They don't recognize that other league similarly initiated and operating subordinately to the Carolinas Conference.

Names do bother Mrs. Ezell a mite. She wishes she could remember more of the older Elon stars. A few names with Elon affiliation are no trouble at all for her.

Lacey Ezell, a son now in government service at Durham, attended Elon.

Lonnie Ezell, another son, went to Elon in preparing to be a ranking educator at the University of Texas.

A third son, Tom Ezell, just retired from government service in Washington, spent some time at Elon — "catching a few dates," as he recalls of his younger days. Howard Ezell, yet another son, was well known on the Elon campus, too. The late John Ezell, former sheriff at Graham, won a Cadillac at a drawing in an Elon football game some years ago.

Mrs. Ezell's granddaughter, Mrs. Gin Reid, a medical researcher in Norfolk, made the collegiate Who's Who at Elon.

There's one more Elon affiliation for Mrs. Ezell. Her grandson-in-law went there, too.

He is me.

Catawba Five Downs Elon By 68 To 59

The Fighting Christians hit possibly their lowest point of the entire season last Saturday night when they dropped a 73 to 53 decision to the Catawba Indians at Salisbury, which provided a split in the two basketball engagements between the Christians and Indians for the season.

With the Indians massing their defense tight, Elon was never able to get any effective attack going. Jesse Branson and Bill Morningstar, each with 14 points, were the top scorers for Elon in the battle.

Pos. Elon (53) Catawba (73)
F—Branson (14) Pope (29)
F—Davis (6) Rhodes (8)
C—Smith (6) Garrison (24)
G—Atkins (6) Childress (2)
G—Morningstar (14) Smith (23)
Half-time: Catawba 42, Elon 33.
Elon subs — Andrews 2, Denhart 1, Winfrey 4, Hall, Catwba subs — Johnson 2, Boyd 2, Ruth, Hackett, Sessions.

Elon Quintet Tops Indians In Tilt Here

Brilliant outside shooting by Roland Miller and great rebounding by jumping Jesse Branson featured the Fighting Christian play as the Elon eagles launched a strong second-half attack to trample the Catawba Indians 71 to 46 in a Carolinas Conference cage battle here on Saturday night, January 17th.

The Catawba eagles pushed the Elon outfit close through most of the first half, and the intermission found the Indians trailing the Christians by barely two points at 35 to 33. The Christian cage fans were anxious at that point in the game, but the Elon netters came loose with a tremendous attack and an iron-clad defense in the second half.

With Roland Miller dropping the ball into the net from all points and all ranges and with the towering Branson sweeping the backboard as clean as a boarding-house wash plate, the Christians jumped to a quick lead after the half-time and widened the gap steadily until the final whistle.

The Christian defense was also a thing of beauty in that final period, for the Indians only got five points in the first ten minutes after intermission, and the Catawba shooter were able to hit on field goals only three times in the final half.

Coach Bill Miller, commenting on the Elon play after the game, declared, "Our defense in that second half was tremendous. Jesse Branson did not get many rebounds in the first half, but he started getting them all in that final twenty minutes of play. Then Roland Miller started hitting from outside and ruined the Catawba zone."

It was the sharpshooting Miller who paced the Elon attack for the night, for he hit 21 points, most of them from long range. Others in double figures were Bill Morningstar with 14, Branson with 13 and Edward Andrew with 10 points.
Pos. Elon (71) Catawba (46)
F—Branson (13) Pope (12)
F—Davis (4) Rhodes (8)
C—Andrew (10) Garrison (14)
C—Miller (21) Johnson (5)
C—Morningstar (14) Childress (2)
Half-time: Elon 35, Catawba 33.
Elon subs — Smith 2, Winfrey 3, Bowman 2, Atkins 2, Such, Hughes, Hall, Denhart, Catawba subs — Sessions 5, Robbins, Ruth, Boyd, Hackett, Smith.

Spotlighting The Christians

(Continued From Page Three)

resulted in a major riot and the removal of Coach Quinn from the scene of this earth. With 2:50 to go and Elon down by seven, Coach Quinn walked over to the Elon bench and attempted to shake hands with Coach Miller, an act which was most unsportsmanlike and totally in bad taste. Had not Coach Miller used self-control, Coach Quinn might have a flat place where his nose ought to be.

After losing this big game, the Fighting Christians were quite naturally let down, and this was quite evident in the team performance against Belmont Abbey two nights later. As a result they were far from normal at the gym last week, and to add to the general situation and feeling, both Roland Miller and Dave Winfrey were sidelined with leg injuries.

Concerning the team's outlook for the future, Jerry Osborne, who keeps in close touch with the inside, still felt that "we have a real good chance to win the rest of our games. To do this, we must play good defense and good ball on the end. All the rest of our games will be tough, for we are still the same to beat."

Coach Miller wished me to express his personal thanks and the thanks of the team for the fine report which has been given this season by the student body and the people of Elon College, Burlington and the surrounding areas. This brings me to the point I wish to make. It is true that the report of the basketball teams this season has been truly great. However, it is always easy to support a winner. Although we are not by

OUTSTANDING FOOTBALL PLAYERS SHOWN WITH HONOR AWARDS



The recipients of awards at the annual Elon College football banquet, which was held Thursday, January 16th, are shown above. Those pictured left to right are Alex Burnett, of Buffalo Junction, Va., the "Most Improved" player on the Christian squad; Dan Kiley, of Darlington, S. C., who received the sportsmanship trophy for the third straight year; Cameron Little, of Roanoke Rapids, Va., honored as the outstanding lineman; Coach George Tucker, who holds the Fighting Christians' trophy as co-champions of the Carolinas Conference; Willie Tart, of Dunn, honored as the most outstanding backfield man; and Joe Berdosh, of Manay City, Pa., who received the "SPARC" award that recognizes sacrifice, pride, aggressiveness, respect and courage. All of the above played outstanding roles in bringing Elon her share of the Carolinas Conference championship in 1935.

Of Players And Playmaking At Elon

(Continued From Page Two)

Four Plays In 1925
Four plays were presented during the 1924-25 college year. "Come Out of the Kitchen," was given by the Psi-Phi Entertainers; "The Charm School," a delightful comedy, was presented by the Psycholons; "Dulcy," a three act comedy, was given by Philologist Society; and "A Regular Scream," was the offering by Clio. It is interesting to note that William B. Terrell, later an editor of the Maroon and Gold and present-day secretary of the General Alumni Association, was a member of the "Dulcy."

Sydelines

(Continued From Page Two)

Professor Gerald Wolfe, who joined the Elon geography faculty only this year, has informed me that he is amazed at the ignorance of Elon College students in regard to certain phases of world affairs. He said that only one person in the geography section could locate Cambodia on a world map, and further that three fourths of the students could tell within five thousand miles of where it was.

He found that more than 100 students could not identify forty states on a blank map of the United States, and one wonders how Elon students can talk or read intelligently of world affairs if they do not know where the events are happening. No person is expected to be familiar with the entire world, but it is our duty as Americans to stay informed.

The season of 1925-26 brought our additional plays, all by the literary societies. The Philologist gave "A Marriage of Convenience," on November 26, 1925; the Psycholons presented "The Whole Town's Talking," a three-act farce, on January 19, 1926; the Clios gave a drama, "The Dust of the Earth," on February 26, 1926; and the Psi-Phi presented "The New Poor," a three-act farce, on April 3, 1926.

During the 1926-27 term the four literary groups gave programs, but there was no record of real dramatic offerings. The Maroon and Gold for that period reveals that the Dramatic Expression Department, under the direction of Miss Emily Johnston, took over the stage activities, and partial files reveal that the only plays given were "The Patsy," presented on December 9, 1927, and "Second Childhood," presented May 23, 1928 to a large crowd.

The records for the seasons of 1929, 1930, 1931 and 1932 are scarce, and there is no definite record of student stage work, although there is a mention in the Maroon and Gold of the presentation of "Boomerang" by the Expression Department on March 1, 1929.

Dramatic Organizations
A newly organized dramatic club, the Playmakers of Elon College, made its appearance in 1932 and on December 6th of that year the group presented "You and I," a comedy in three acts, as its initial performance. This was under the direction of Miss Virginia Fitzhugh. Other offerings by the Playmakers that year included three one-act plays, "The Delicate Child," "Lima Beans," and "The Return of Buck Garvin." Also given that year was "Polly With A Past," but complete data was lacking.

The Playmakers failed to remain active for long, and the Maroon and Gold in the fall of 1934 carried a story of a reorganization for dramatic activities. The story stated that "realizing the need of an active dramatic organization on the campus, a group of students under the direction of Miss Floyd Childs met in September, 1934, to reorganize the inactive Playmakers of Elon College."

The story stated that "at the first meeting the name was changed to the Elon Players." First officers of the new Elon Players included Rebecca Smith, daughter of Dr. Leona E. Smith, who was named the first president of the group. Other officers of the Players that

first year were Dick Kimball, of Mansion, and Marcell Ackenhansen of Cincinnati, Ohio.

On November 22nd that year the Elon Players gave their first performance. It was "Her Husband's Wife," which was presented in the Play Auditorium. The second performance of 1934-35 came on March 21, 1935, when a bill of three one-act plays was presented. The bill included Christopher Morley's "Thursday Evening," Susan and "The Valiant," great one-act tragedy by Hall and Middlemass. The Players also gave a commencement play in 1935, choosing Sidney Howard's famous comedy "The Late Christopher Bean."

Ibsen Play Presented
The Players were once more under the direction of Miss Childs for 1935-36, and they chose Ibsen's "A Doll House" for their first show of the year. Outstanding in the cast was Sara Virginia Hook, daughter of Prof. A. L. Hook, who was listed as "heading the cast for the play." The Maroon and Gold recalled that she had taken the lead in previous performances of "Polly With A Past" and "Peg O' My Heart" and that she had a prominent part in "The Late Christopher Bean."

It seemed that dramatics at Elon at that time were a cooperative project, for the stories stated that costumes for "A Doll House" had been made by the Home Economics Department, which was directed at that time by Miss Laura Howard. A complete new set of scenery had been made for the play by the Players themselves, with the help of Alfred Apple, then the superintendent of buildings.

The review of "A Doll's House" in the Maroon and Gold spoke with praise of the work of two youngsters in the play, paying tribute to "Patricia Hook, eight-year-old daughter of Prof. and Mrs. A. L. Hook."

On March 19, 1936, in Whitley Auditorium, the Players presented two one-act plays entitled "Joint Owners in Spain" and "Finders, Keepers," which were given favorable reviews and described as characteristic of the fine work of the group. Miss Floyd Childs was still directing the Players that year.

During the school year of 1936-37, there were few records available, but Dr. Fletcher Collins took over as director in 1937. One of the offerings that year was "The Taming of the Shrew," given by the Shakespeare class.

View From Oak

(Pictures On Page Two)

The charges are read, and the student points out that no rule covers these offenses. So is the student going to be fined or will he get off?

If he is fined, he is getting a hard deal in my opinion because here are no rules covering these charges. But if he gets off, the other car operators are losing in the long run.

At the meeting yesterday, it was probably suggested to the Student Affairs Committee that the whole parking system be revised; that a new type of registration form be utilized, new sticker numbering be used, new tickets be printed, and above all, new rules be established that will provide concrete grounds for charges, centralization, and order instead of chaos.

Elon Caegrs Defeat Lions By 86 To 52

The Christians were far from hot in their play, but they used superior height and a tight defense to turn back the Frederick Lions 86 to 52 in a non-conference battle on the Elon court here on Thursday night, January 30th.

Jesse Branson, Elon's 6-7 scorer, scored 32 points and pulled down 21 rebounds as he led the team to an easy triumph over the visitors from the Virginia Tidewater. The Elon quint had also defeated Frederick by a decisive margin on the Lion court in early season.

The towering Branson received able aid from his mates, for three other Elon players were in double digits for the night. Bobby Atkins, freshman guard, who started due to the injury of Roland Miller and Dave Winfrey, turned in a fine game and counted 12 points.

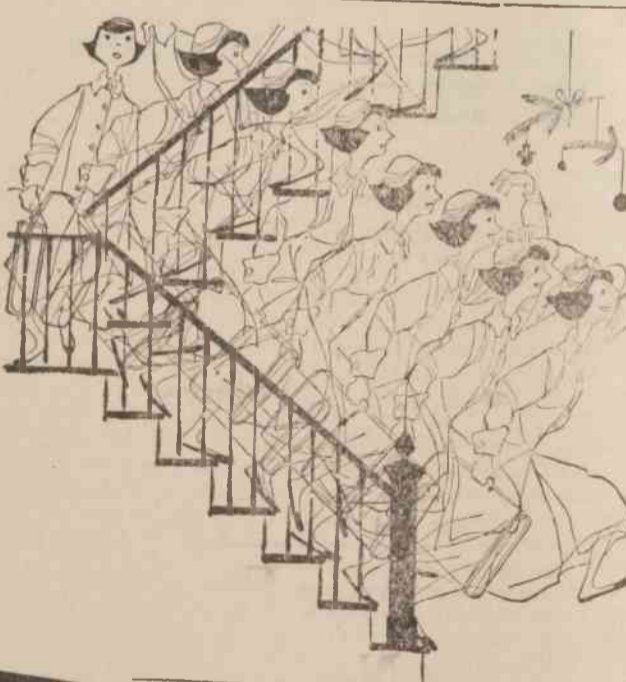
Pos. Elon (86) Frederick (52)
F—Branson (32) Watkins (21)
F—Davis (6) Flynn (20)
C—Smith (10) Gavin (18)
C—Atkins (12) Murray (12)
G—Morningstar (10) Edwards (9)
Half-time: Elon 37, Frederick 23.
Elon subs — Andrew 5, Bowman 5, Such 2, Hall 2, Denhart 1, Hughes. Frederick subs — Shell 5, Hodges 2, Sanford 2, Joseph 1, Cottrill 1, Hodge 2, Hemphill.

Grid Schedule

(Continued From Page Three)

Carolina date, Coach Tucker would like to have a home game. However, as the schedule now stands, the first home games will be with Carson-Newman and Catawba on the third and fourth weekends in October. The late season shows home games with Newberry and Lenoir Rhyne and battles away with Western Carolina and Frederick.

The winter workouts, which were slated to get underway on Tuesday of this week, are expected to continue throughout February and through at least the first week in March. The closing date will probably be decided by how much winter weather interferes with the off-season drills. Tentative plans call for scrimmage battles with Catawba and Guilford to close out the winter practices.



When you pause... make it count... have a Coke



BOTTLED UNDER AUTHORITY OF THE COCA-COLA COMPANY BY BURLINGTON COCA-COLA BOTTLING COMPANY
"Coke" is a registered trade-mark. © 1935, THE COCA-COLA COMPANY

(Continued Next Issue)