



# The Cougar Cry

THE VOICE OF WILKES COMMUNITY COLLEGE



VOLUME 18, NUMBER 1

WILKESBORO, NORTH CAROLINA

AUGUST 28, 1987

## Welcome To W.C.C.



Dr. David E. Daniel  
President

### President's Message

Welcome to Wilkes Community College! We are pleased to see so many new faces, as well as familiar ones. I know you are as eager to experience life at WCC and the many services we have to offer as we are to serve you.

There is much for you to do at WCC, and we hope that you will take advantage of the opportunities that the college has to offer. Our commitment to education is foremost, however, that's only a part of what makes up college life. WCC provides a variety of clubs and organizations which we encourage you to take part in. For the athlete, there are numerous sports events which take place throughout the year; the newest addition is the WCC Wrestling Team. If music or drama is your interest, then take part in the WCC Jazz Ensemble, WCC Symphony, or the college theatre.

In between studies, take time to tour our beautiful gardens, walk the native trail, enjoy a game of tennis, or spend your lunch outdoors in our new picnic areas. Whether you need to be alone to study, or enjoy fellowship with friends, our campus can provide the perfect atmosphere.

Feel free to visit my office anytime during the year. We at WCC are here for you. It is our privilege to serve you.

### Auditions For "Death Of A Salesman"

Auditions for the College Theatre's Fall production "Death of a Salesman" will be held at 7:00 PM on Wednesday, September 9 and Thursday, September 10 in

"The Pit" Auditorium, Thompson Hall. The actual production will be October 29, 30, 31 and November 1 at the Walker Community Center.

Auditions are open to anyone from the college or community. Scripts for "Death of a Salesman" are on reserve in the library or may be found in many anthologies of American theatre literature. There are eight men's roles and five women's roles. No advance preparation is necessary for the auditions.

The show will be directed by Bud Mayes. He can be contacted at the Walker Community Center at (919) 667-0319.

### The American Red Cross Blood Mobile

The American Red Cross needs donors at Wilkes Community College to give the gift of life. Good turnouts in the past proved time well spent at WCC for the Blood Mobile, due to the students and faculty members who gave the precious gift of life. However, since supplies do run short after a time, more blood will be needed! On September 30, 1987, the Blood Mobile will be stopping by the campus in hopes that many donors will show up and donate blood for a good cause. Please stop by, you'll be glad you did.

Reggie Wiles

### Question of the Month

If kindness were a crime, could enough evidence be found to arrest you?

### Our Campus

"The flower gardens are beautiful and makes the morning bright as we walk in. They certainly are worth the time coming to view," said Shelby Ball, a sophomore.

"The gardens are very well kept, and on the first appearance are so pleasing to the eye. They are quite miraculous and gives the college a different look from other schools. This college is one that made it possible for me to get an education. The whole place is beautiful," said Mike Johnson.

As the summer passes, Wilkes Community College continues to be a thriving source of education and beauty. In addition to the many varieties of gardens, we welcome the addition of two new gardens; the Vernon Deal Native Garden, and the McNeil Perennial Garden.

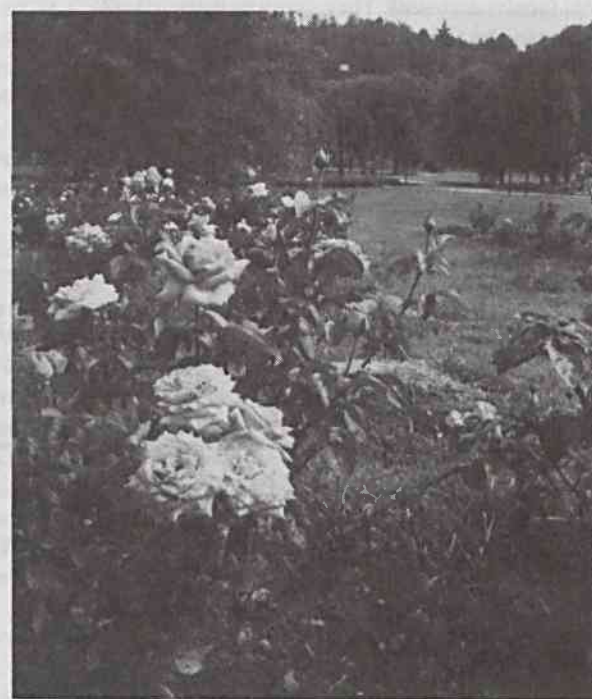
The Vernon Deal Native Garden is located on the East side of the campus behind the student parking lot and includes many varieties of wildflowers, as well as native plants of the Northwest Region. Extending along a one mile trail the Deal Garden offers eighteen athletic stations recommended to strengthen the respiratory and circulatory system. The exercise stations and the trail are accessible to the handicapped with special exercises designed for people who require wheelchairs.

In addition to exercise, the garden offers something for all ages. As retreat from summer heat, there are newly added picnic tables and barbecue pits in a shaded segment of the trail. If you have the knack for it, you can also try your hand at horse shoe games. For those demanding a rigorous athletic workout, there is a baseball diamond, or the new tennis courts.

The Vernon Deal Garden is named for the retired President of Northwestern Bank which is now First Union Bank. Mr. Deal is responsible for the endowment to build the garden which benefits our campus as well as the community.

The Native Garden was dedicated as a conjunctive element with the Robert Hayes McNeil Memorial Garden on the south side of Lovette Hall during a ceremony honoring Mr. McNeil for his commitment to the careful planning of progressive change in Wilkes County.

Donated by the McNeil Family, the new garden contains several varieties of perennial plants. These blooms occur about once a month the whole year round and will return again for years to come. Such an assortment offers aesthetic beauty for the public year round and represents an ongoing interest



for the community and our visitors. The varieties include pink and white Begonias, yellow and orange marigolds, as well as cone flowers. The garden is designed to enhance color to what was once a drudgerious drive between lower and upper campus.

Together these gardens add a well rounded enhancement to the existing gardens on campus. Wilkes Community College Gardens are a dream come true for several hard working individuals. Most notable of all is Mr. "B" Townes who is responsible for not only overseeing horticulture projects, but, also, he is the backbone of fund raising through endowments. Mr. Townes has raised \$800,000 of his \$1.6 million goal. Such endowments have come from Holly Farms, Sarah Mills for the Japanese Garden between Hayes Hall and Thompson Hall, and Ruth Colvard for the Rose Garden. Endowments

are also responsible for maintaining the gardens year round.

In addition to Mr. Townes, hard work has been performed by volunteers in the community. Mr. James Bell has donated his time and experience in completing the Rose Garden. Together with Tray Maltby, grounds technician, volunteer work has continued the growth of the Rose Garden from 140 bushes planted by students. Currently, through volunteer work, there are 800 bushes of common as well as exotic variety. The gardens were designed by members of the Garden Committee. Terry Deal (Vernon Deal's niece), and Susan Andrews.

"Everyone is urged to take time to enjoy the gardens and share in the great progress of our community. The gardens represent growth not only outside, but also from within the halls of our campus," said Pat Nelson.

Robert Parsons

## PICTURES ARE TO BE TAKEN FOR YEARBOOK

On  
September 2, 1987  
FRESHMEN, FACULTY, and STAFF  
8:00 a.m. to 4:00 p.m.

September 9, 1987  
SOPHOMORES  
10:00 a.m. to 2:00 p.m.  
and  
6:00 p.m. to 8:00 p.m.