



The Library, King Hall, and New Garden Hall, standing at the top of the hill, that forms the west side of the quadrangle

## THE CAMPUS

THE buildings on the Guilford College campus are arranged in a large quadrangle with the main drive running through the center. The three campus pictures shown this week are all of scenes west of the main drive. East of the drive are the boys' dormitories, the gymnasium, the Hobbs Athletic Field and the Y. M. C. A. building. As can be seen from the pictures, the west campus rises gently from the drive to a higher level upon which the buildings are placed. Directly in line between Founders Hall and the Library is a natural amphitheater. Last year with a background of cedar, spruce and box and with a flowering dogwood in the foreground a beautiful May Day pageant was given. A May pole was wound and other drills were performed by gaily dressed maidens of the May. At Commencement time the senior class gave "The Forest Princess" in the same place as a part of the festivities of Commencement week.

as these die they are being replaced by others. Nothing is allowed to disturb the birds and the squirrels on the campus, and it is rarely indeed that one can at any time of year look out over the campus for even a few minutes without seeing from one to half a dozen squirrels scampering about among the trees. Shrubbery has been abundantly planted around all the buildings and so well have these been chosen that they furnish one successive mass of bloom after another. Views of the athletic fields and descriptions of the athletic activities of the college will be given in a later issue of the Guilfordian. Needless to say, these will not be descriptions of "still life studies."

The relation between a dairy herd and a college may not at first thought be apparent, but Guilford students realize it every morning at seven o'clock when hot biscuit and butter time comes. Not only do the milk and butter supplied to the dining rooms cut an important figure, but the maintenance of a herd of high grade cattle under modern methods of management furnishes a valuable object lesson to students interested in agriculture. The college farm also supplies the pork and poultry products used by the college. To an increasing extent each year the college orchard and garden are supplying the fresh fruits and vegetables for the dining rooms. During

The majority of the older trees are white oaks and



A sweep across the amphitheater where outdoor plays and pageants are given.

the summer, fruits and vegetables are canned for use the following school year.

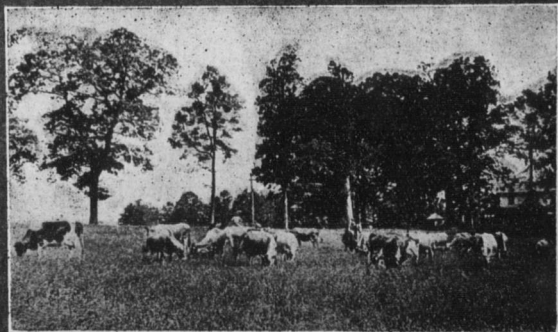
The Guilford campus furnishes a beautiful and quiet place in which to live and work. The college farm does its part to supply a wholesome physical basis for right living and effective working.

Nourished with wholesome food, and set upon a beautiful campus, the life of the student body has many charming features, as one may observe on balmy afternoons when groups of students are studying under the great trees, or after four p. m., when the boys on the Hobbs' Athletic Field, and the girls on their grounds, bordering west side of the campus, are pursuing their games of ball or tennis, or are testing their skill in other forms of recreative contests which develop vigorous bodies ready for the world's great games.

Many are the lessons of co-operative effort that are being learned in the activities of the students, as they help to preserve the beauty of their campus home, and labor together in their Christian Associations, their Literary Societies and Clubs, with the accompanying social functions, or compose and edit the weekly newspaper, or support their representatives in the intercollegiate contests in athletics, debate or oratory.

These campus activities, all of which make a wholesome contribution to the life of the community are hardly surpassed by any in the country.

With the increasing complexity of the modern life, it is more important than ever that young men and women learn how to live with their fellows. The experience of democracy gained by participation in the life at Guilford is a foundation upon which our students build habits of public service which make for progress.



Another view under the great oaks and hickories. Memorial Hall, the administration building, to the right.

The products of the college dairy and farm add much to the wholesomeness of Guilford fare.