

ELLIS STONE & COMPANY
Greensboro's Best Store
for
Women and Misses

REEVES'
Eye, Ear, Nose & Throat
INFIRMARY
Phone 30
Greensboro, N. C.

PIEDMONT SPRINGS HOTEL
for a
HEALTHFUL
SUMMER VACATION
in the
MOUNTAINS

J. Spot Taylor, Pres Danbury, N. C.

SCHOOL SUPPLIES
A full line always on hand
for your selection.
WILLS BOOK & STATIONERY
COMPANY

SMITHDEAL
REALTY
&
INSURANCE
CO.
Winston-Salem, N. C.

SCHIFFMANN'S
Leading Jewelers
Greensboro
Jewelry Gifts
Precious Stones
College Jewelry

GET
FLOWERS
from
SUTTON'S
Jefferson Bldg.
Greensboro

PENNSYLVANIA LUMBER CO.
Manufacturers of
Millwork and Framing
(Quality has no Substitute)
Phone 231
Greensboro, N. C.,

Thomas & Howard
Wholesale Grocers
Greensboro, N. C.,

Brown & Ruce
Agents for
LUCAS RROS.
Cleaning and Pressing

GREENSBORO'S OLDEST AND
LARGEST SHOE STORE

DOBSON-SILLS
Shoes—Hosiery "Too"
Greensboro, N. C.,

GUILFORD LOSES FRIST
HOME GAME TO ELON BY
ONE LONE TOUCHDOWN

(Continued from page 1.)
Guilford's 10 yard line. Kimrey plunged three times for 1st down. Roberson lost 2 yards, on a line buck. McBane made 6 yards on an end run. Kimrey made 14 yards thru the line. Guilford seemed to be marching steadily toward Elon's goal, but the next play resulted in a loss of 5 yards. The next brought no gain, and Hendrickson punted to Elon's 20 yard line. Kelly captured the ball, and the field seemed open for a long run. By a superb effort Captain Warrick dodged the interference and made a wonderful tackle, Kelly making only about 3 yards. Elon then made 21 yards by plunging and end runs by Kelly, Harrell and Kirkland. Guilford off side, penalized 5 yards. A reverse play three plunges and another off side, won 18 yards for Elon. Ball rested in Elon's possession on Guilford's 35 yard line.

FOURTH QUARTER
Guilford off side, penalized 5 yards. Elon penalized 15 yards for holding. Hyatt went in for Brawley. Kelly made 6 yards on an end run. Harrell kicked to Guilford's 15 yard line. Kimrey made 6 yards on an off tackle play. No gain was made in a line plunge that followed. Kimrey kicked to Guilford's 45 yard line. On a line plunge, Lindley, of Guilford, started with a quick plunge and tackle, causing Kelly to lose 2 yards. Guilford off-side penalties, each caused by Captain Warrick, are the only real blunders of the game, and the only things that mar "Chunk's" glory. Bock made 5 yards thru the line, making first down. 32 yards to go for touchdown. Coggins made 2 yards on a line buck, Guilford off-side penalized 5 yards. Bock to Kelly, reverse play, gained 2 yards. Bock made 2 yards thru the line. Coggins, Kelly, and Harrell made line plunges, netting 9% yards. Bock made one yard, making 1st down. Harrell made 5 yards on three plunges. Things stood: Elon's ball on Guilford's 5 yard line, 4th down, 5 to go. The ball was snapped. After a moment of hesitation, Bock passed to Kelly, who galloped across for a touchdown. Richardson failed to kick goal. There were five minutes left. Jones kicked to Hendrickson on Guilford's 15 yard line, but the ball was run back to the 27 yard line. On the second of two attempted passes, Raub, of Elon, intercepted and took the ball back to Guilford's 20 yard line. By series of line bucks, in which Raub was particularly good, Elon made 15 yards, once more being encamped upon Guilford's 5 yard line. Raub lost 1 yard. In the midst of the suspense, the final whistle blew.

The lineup and summary follow:
Guilford college Position E. college
Whitele Brown
Lindleylt Brown
Hoylelg "Red" Jones
Warrickc MacAuley
Harrellrg Foster
Tewrt Cox
Parrishre Byerly
Kimreyq Kirkland
Robertsonhb Coggins
Hendricksonhb Harrell
McBanef Kelly

Score by quarters:
Guilford 0 0 0 0-0
Elon 0 0 0 6-6

Officials—Referee, Henderson, of Graham; Umpire, Parker, of Springfield; Headlinesman, Yorks, of University of North Carolina. Attendance 100.

DRINKWATER TO GIVE ADDRESS
(Continued from page 1.)
to say that, "It took a great Englishman to write an adequate characterization of Lincoln."

This is Mr. Drinkwater's second tour of this country, and it is predicted that he will receive the most enthusiastic reception ever accorded a visiting English author.

Guilford is unusually fortunate in securing Mr. Drinkwater's on this year's lyceum course. He will also deliver a lecture at N. C. C. W. in Greensboro, following the one here.

THE PERISCOPE

By Beulah Allen

All students at the University of Oregon who fail to pass an entrance examination in English are required to take a course in English usage, without credit, until excused by the instructor.—*Salemite*.

Miss Martha Andrews, of Raleigh, is the first co-ed to be registered in a regular undergraduate course at State College since 1923. In that year Miss Lucille Thompson, of Wilmington, graduated in Electrical Engineering. Miss Andrews is registered as an irregular sophomore in Ceramic Engineering.

Miss Andrews came to State College from Meredith where this year she was a to have entered the Junior Class. She is especially interested in art, and after receiving her degree in engineering intends to enter decorative pottery work. She has recently studied under Gutzum Borglum and has done some very artistic modeling.

As far as is known, Miss Andrews is the first woman to register in any college in ceramic engineering. A number of others have taken work in are pottery but not in engineering.—*The Technician*

Adhesive type, 26 miles of it in 12-inch rolls, and 20 miles of muslin for bandages have been supplied by the University Health Service to the athletic training department at Purdue University.—*The Technician*



National Underwear
for
Men and Boys

Ribbed and Athletic Styles which have every wear-resisting and comfort giving feature

P. H. HANES KNITTING CO.

Winston-Salem, N. C.

QUALITY JEWELRY

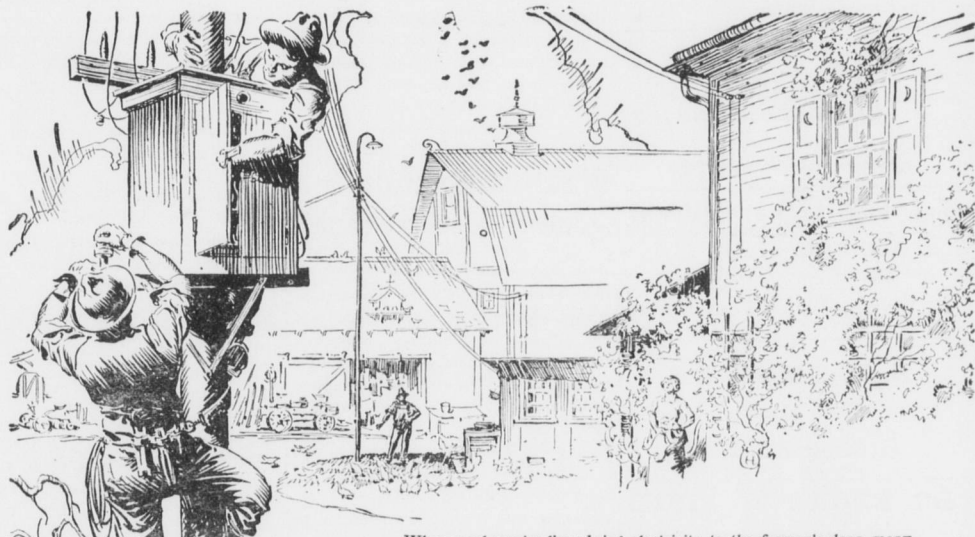
LOW PRICES

Greensboro Jewelry
& OPTICAL CO.

Inquire about our Time Payment Plan

345 SOUTH ELM ST.

GREENSBORO, N. C.



When rural service lines bring electricity to the farmer's door, many of his labor troubles are at an end. Motors, large and small, will do the many chores of farm and farm house for a few cents per day.

The Farm Electrical

Of the six and a half million farm homes in this country, only half a million have electricity.

Still, the advantages of electricity are widely known. But there is more to farm electrification than the installation of motors, lights and heaters. Current must be brought to the farm, and that means many miles of transmission line, supporting poles, transformers, and adequate generating equipment.

Slowly but surely the electrification of American farms is taking place. As farmers learn how to use electricity, rural service lines reach out farther and farther into open country.

Six million farms to be electrified! Here is a vast and virgin field for the application of electricity, with countless opportunities for college-trained men in the technical and commercial phases of this undertaking. And for the agricultural college student and others planning a future life in rural sections, it means a better, bigger, happier life-time now in the making.



Since its inception the General Electric Company has pioneered in the various fields of applied electricity. Today G-E engineers are co-operating with various State agricultural committees in the study of farm and rural electrification. These committees include members of the agricultural college faculties.

A new series of G-E advertisements showing what electricity is doing in many fields will be sent on request. Ask for Booklet GEK-1.

GENERAL ELECTRIC
GENERAL ELECTRIC COMPANY, SCHENECTADY, NEW YORK