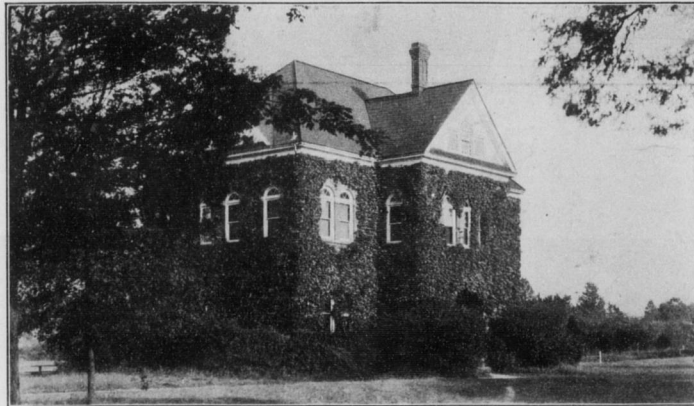
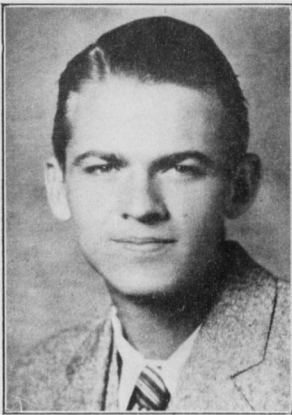


## OUR CAMPUS LIFE

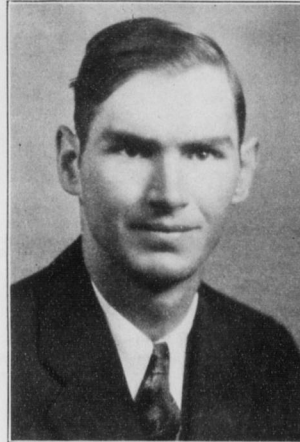
A haven for the musical—voice, piano, orchestra, and choir singing are taught. And our A Capella Choir spends many hours here making ready for their concerts which are rapidly growing more popular.



Standing in a mass of shrubbery and overlooking Hobbs Field, the Music Building, with its ivy-covered walls, blends in with the natural beauty of the college campus.



David Parsons was chosen editor of the *Quaker*, the College yearbook which is published by the students in May. His co-worker, the managing editor, is Billy Edgerton.



Curtis and Ethel Swain have charge of the Christian Associations' Activities next year.

Edith Cooke, house president of New Garden Hall, represents the Women's Student Government Council. Jewell Conrad who is also choir soloist, heads this organization with Mildred Conrad as house president of Founder's Hall.



Samra Smith, as Managing Editor, and George Greene, as Editor-in-Chief, will be in charge of the College newspaper for the coming year, with Bob Jamieson heading the business staff.



Rachel Beasley—laughing, vivacious Rachel, will be Maid of Honor to the May Queen.



Sophie Cathey, of blonde stately beauty, will be crowned queen of the campus on May 2.



A GROUP PICTURE OF THE GUILFORD COLLEGE STUDENT BODY FOR THE YEAR 1931-32