



# THE GUILFORDIAN



VOLUME XXVIII

GUILFORD COLLEGE, N. C., DECEMBER 13, 1941

NUMBER 6

## Guilford To Give Annual Charter Day Program, Jan. 13

### Guilford Student Will Represent Y At National Assembly

Ann Schneider has been chosen to represent the Y.W.C.A. of Guilford college at the National assembly of Student Christian associations which will convene at Miami university, Oxford, Ohio, from December 27, 1941 to January 3, 1942.

The Y.M.C.A. of Guilford college will not send a representative.

The National assembly is a part of the regular program of the National Intercollegiate Christian council, a representative council authorized by the National board of the Y.W.C.A., the National Council of Student Y.M.C.A., and by the Regional Student Christian movements. The assembly meets once every four years.

The theme of the meeting will be "Christian Faith and Social Reconstruction."

Speaking at the Assembly will be Gregory Vlastos, professor of philosophy at Queens university; T. Z. Koo, secretary of the World's Student Christian federation in China; Malcolm S. McLean, president of Hampton institute; and Homer Brown of the Pennsylvania legislature.

Corporate worship will begin each day of the Assembly meetings. Seminar groups will meet twice a day—in the morning to consider Christian faith and the afternoon to work on social analysis. Questions to be discussed will pertain to the typical problems

(Continued on Page Three)

### Dr. Milner Addresses Club On International Relations

Dr. Clyde A. Milner will speak on "The World We Live in and a World We Want to Build—a Philosophy of International Relations" at the first meeting of the International Relations club which will take place Monday evening, December 15, at 8 o'clock in the Hut.

Dr. Algie L. Newlin will make a brief talk on the purpose of the club, and Austin Scott will present several flute solos of various countries.

Members of the committee working on plans for the first meeting are Gerhard Friedrich, Margaret Jones, Claus Victorius, Hudson Bowne, Marjorie Lee Browne, and Roy Lenke.

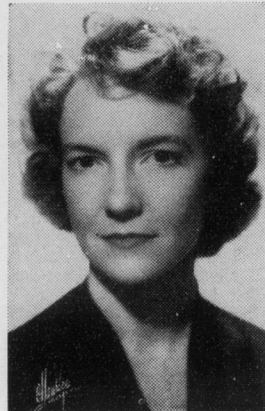
## Machine Reveals Emotional Upsets in Laboratory Tests

By SARAH GRAY

It's amazing! Sees all, knows all, and tells more—it's the psycho-galvanometer that was used in the psychology lab, last week.

The unwilling subject goes to the laboratory and reluctantly allows Dr. Purdom, assisted by Helen van Achterberg and Elfried Pennekamp, to tie him up to this discloser of his innermost secrets—that is, if his best friends know the key words. It works something like this: the guinea pig's hands are connected via electrodes to a sensitive (and we do mean sensitive) galvanometer. When he is emotionally upset, the machine causes a light to

### "Messiah Soloists . . .



. . . for the 15th annual presentation of Handel's oratorio at Guilford college, to be given in Memorial hall tomorrow afternoon at 3 o'clock, are Carl G. N. Cronstedt, basso, director of music in High Point public schools; Miss Martha Kasey, contralto, member of the Greensboro college music faculty; and Frederick Ludwig, tenor, member of the faculty of Elon college. Mrs. William B. Edgerton, Guilford graduate and wife of W. B. Edgerton of the Modern Language department here, will carry the soprano solo.

### German Club To Give Xmas Play, Dec. 15

Dr. M. Huth Directs; Mr. Daryl Kent Will Read Nativity Story

Final plans for a German Christmas play by Hans Sachs, to be presented by the German club, were made at a meeting of the club on Thursday, December 4. The play will be given on Monday, December 15, at 7:15 p.m. in Memorial hall.

Mr. E. Daryl Kent will read the nativity story as found in Luke 2:1-14. Members of the cast are: Edith Swisher, who will take the part of Maria; John Hobby, Joseph; Dick Taylor, Archangel; Mason Krenn, inn-keeper; Gerda Ungar, inn-keeper's wife; Reed Landis, Jim Lehr, and Nathan Cohen, shepherds; Raoul Kann, Claus Victorius, and David Spiegel, the three kings.

Hella Meyer, Jim Lehr, Dick Taylor, and Mason Krenn are in charge of the stage. Toni and Gerda Ungar will have charge of make-up. Hella Meyer will be at the book.

The play is under the direction of Dr. Mari Luise Huth, assistant professor of German and faculty adviser of the German club.

### Sophomores To Give Sadie Hawkins Dance Tonight

The sophomore class will give a Sadie Hawkins dance this evening in the basement of the gymnasium at 7:30.

Arrangements for the dance are being made by the class social committee, headed by Margaret Ellison. The committee has asked that everyone wear old clothes.

This is a girl-ask-boy party, but boys and girls are urged to come stag if they prefer.

Tickets for couple or stag are 25 cents and will be sold at the door. There will be refreshments.

### A. Crawford, Secretary Of Hartford, Visits Here

Mr. A. Crawford, financial secretary of Hartford Seminary Foundation visited Guilford college on December 4. Faculty members and a small group of students met him at 4 o'clock tea at the home of Mr. and Mrs. Daryl Kent. They discussed informally Hartford Seminary and religious education in general.

Hartford, a non-sectarian seminary with more than 250 students, has had several Guilford graduates in attendance there, among whom are Harold Sharp, '38, and Floyd Moore, '39. Marjorie Faw, '35, was a student at the

(Continued on Page Four)

### Fine Arts Club Has Party

The Christmas party of the Fine Arts club was held on Wednesday, December 10, in the Music building.

With the help of Mr. E. Daryl Kent, the following students made recordings: Barbara Anderson, Barbara Clark, Marie Craven, Darrell Durham, Henry Lane, Una Seal McBane, Joan Ripperger, and Austin Scott.

After the performance, gifts were exchanged among the club members and refreshments were served.

Besides the student members of the club, Dr. and Mrs. Ezra H. F. Weis, Mr. and Mrs. Kent, and Miss Rossie Andrews were present at the party.

### A Cappella Choir Will Sing On WBIG, Dec. 18

Presents Annual Christmas Program, Including Carols, Choruses From "Messiah"

The Guilford College A Cappella Choir, under the direction of Dr. Ezra H. F. Weis, will present its annual Christmas program over WBIG on Thursday, December 18.

The program will be in two parts. The first will consist of choruses from Handel's "Messiah." The second will be a group of Christmas songs from various countries. It will include *Hark! Bethlehem*, a Polish carol; *Harken, Harken, Mother dear!*, a Czech carol; *Angels we have heard on high*, a French carol; *Hark! in the darkness*, a Polish carol; *The Hushing Carol*, *The Holly and the Ivy*, and *The Carol of the Bells*.

The choir members will be the guests of Dr. and Mrs. Weis at a Christmas party on Tuesday, December 16, at 7:30. There will be informal games and singing.

The A Cappella choir will sing a group of Christmas numbers in chapel on Friday, December 19.

### Dr. Elbert Russell, Of Duke University, Will Speak At 10:30

Dr. Elbert Russell of Duke University will be the principal speaker at Charter day to be held at Guilford college January 13, 1942. His speech on "The Interrelation of North Carolina Yearly Meeting and Guilford College" will be delivered in Memorial hall at 10:30 at the close of the fourth period class.

Following this talk, the choir will present a 30 minute program and then our guests will engage in panel discussions for the duration of the morning.

Lunch will be served at Founders hall at 1 o'clock, and at 2:15 there will be a period of general discussion in the auditorium, at which time a pageant written by Miss Dorothy L. Gilbert will be given. Movies will also be shown, depicting life on the Guilford college, campus, and carrying out the theme of the interrelation of our school and the North Carolina Yearly Meeting.

At 3:30 the group will meet for tea in the Parker Room.

Mr. Augustine W. Blair of High Point, in cooperation with the Educational committee of the North Carolina Yearly meeting, has arranged the program, which is modeled on a conference basis. Each monthly meeting has been invited to select one or more representatives interested in education and leadership training to attend the Charter day sessions. It is suggested that these representatives be persons who have children nearing the college age.

Newspapers will carry publicity for this program, and there will also be special announcements made in the meetings, and personal invitations sent by mail.

### Faculty Members Meet With Philosophical Society

Mrs. Ernestine C. Milner and Dr. Paul E. Williams represented Guilford college at the annual fall meeting of the North Carolina state Philosophical society, held Saturday, December 6, at the home of Professor Bowden of Elon college.

Dr. Taube of Duke was the principal speaker. He read a paper on "Space

(Continued on Page Four)

## Printer Recalls Former Days in Guilfordian History

By BETTE BAILEY

Clicking linotype machines, hot lead, humming presses, smooth white paper smelling of fresh black ink—this is the atmosphere of the printer's shop and out of it emerge those singular individuals whose work it is to print your Guilfordians week after week.

Foremost of the characters behind the scenes at McCulloch & Swain Printing office is L. D. Ledbetter, known to us as "Dees." When I told him that I wanted a story about his recollections of former Guilfordian editors, he scratched his head thoughtfully, and with the deliberate precision of one about to divulge some important information, began reviewing the years since

1926 when McCulloch and Swain printed our paper for the first time.

Milton Anderson, editor of the Guilfordian during the year '36 and '37 used to astound the printers by his slight-of-hand acts, such as extracting football stories out of seemingly thin air in much the same manner that a magician pulls rabbits out of top hats. But Milton's stories were probably "up his sleeve" before he began pounding the typewriter keys. He was always enthusiastic, assured Dees. Wind and snow, rain or sleet never curtailed Milton's weekly journey to the printers. Often on dark nights he could be seen striding briskly along Asheboro street,

(Continued on Page Four)