

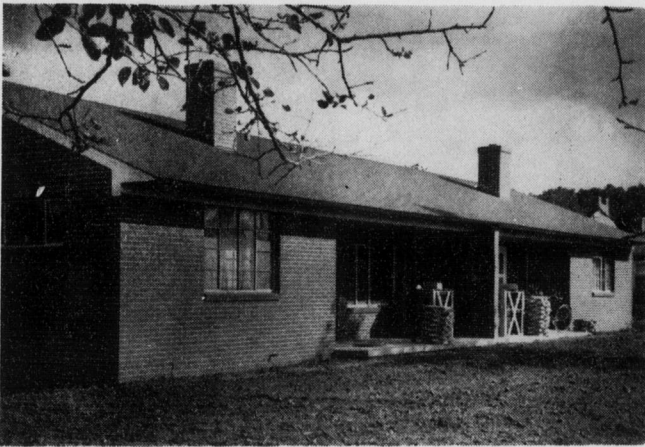
# The Guilfordian

VOL. XXXXI

GUILFORD COLLEGE, N. C., OCTOBER 8, 1954

NUMBER 1

## Frazier Gives New Student Apartments



The front of one of the six completed duplex units. When completed, the Apartments will consist of seven of this type and two with four apartments.

### New Cheerleaders Are Chosen

Six regular cheerleaders and three alternates have recently been elected to complete the 1954-55 squad. These include Bill Michael, who cheered for the Quakers year before last, Lila Tice, Allen Fry, and Jim Tunstall, all from Greensboro. The other two regulars are Carolyn Newlin of Burlington, and Bill Polley, a member of Reynolds' cheerleading team in Winston-Salem last year.

The alternates are Lois Sykes, of Wallace; Earline Ingram of Kernersville, and Bob Iskowitz.

Emily Warrick, head cheerleader; Betsy Marklin, and Ann Rae Thomas, all veteran cheerleaders from last year, complete the group.

#### NOTICE

With the beginning of this school year, the GUILFORDIAN becomes a weekly publication. A decrease in the size of the paper was necessary in order to do this, but we believe the change is a step forward. Read the news when it happens; get your GUILFORDIAN every Friday.

### Frazier Apartments Under Construction

Ten of the contemplated twenty-two units comprising the new John Gurney Frazier Apartments have been completed. The project at its completion will consist of eleven duplex buildings, which will provide for an increase of from twenty-five to thirty students annually.

The new construction will replace the "pre-fabs," and will be built of concrete and brick, with metal doors and window frames. There are two sizes being built; 4½-room apartments with two bedrooms, and 3½-room apartments with only one bedroom. The "pre-fabs" will be torn down this coming summer and the rest of the Frazier apartment built. When this is completed, the entire area will be landscaped and roads and parking spaces will be provided around the completed units.

Each apartment will have a bath tub, lavatory, and toilet; a kitchen with a large double sink; electric water heater; and in most cases, electric stoves and refrigerators. In the living room there will be furnished an oil circulator with thermostatic control and automatic blower. There is a large closet in each bedroom, a linen closet with built-in shelves at the entrance to the bath, and a coat closet in the living room. The apartments became available to the students on September 15.

By his gift, which will eventually amount to \$125,000, John Gurney Frazier has planned a memorial to his father and an honor to his son, John Gurney Frazier, Jr.

It has been explained by Dr. Milner that the John Gurney Frazier Scholarship Fund would increase gradually as the apartment project was completed, assuming that the rentals from the apartments will be devoted in great amount to the fund. Two of the what will gradually become twenty John Gurney Frazier Scholarships have been established.

### Plans For The Coming Year

From the beginning of our Freshman year we can recall hearing plans and future dreams for Guilford being outlined before us. Each year we recognize these dreams as realities.

This year, more than ever before, we see the expansion of Guilford's construction program. The new Kathrine Hine Shore Residence Hall has been completed and is housing forty-nine women students. Funds are available and plans are being developed for the completion and furnishings of the ground floor area.

Other projects to be completed during the next twelve months include: the enlargement and modernization of Founders dining hall and kitchen; a new college infirmary; a student union building; the Frazier apartments.

The renovation of Founders Hall dining room will increase it two and one-half times its present size.

Included in this addition to Founders Hall will be the college infirmary which will be located over the dining hall area.

The erection of the Student Union will be the answer to a long desired wish. Blueprints of this structure show rooms and lockers for both women and men day students, a large lobby, office rooms for the Quaker and the Guilfordian, a large conference room to serve from fifteen to fifty persons and a smaller conference room which can readily be used for personal interviews, and also to be included is a soda shop (or tea room) that opens onto a lovely terrace.

The Frazier Apartments, a project already begun, will also be completed this year.

Though this is by no means all of Guilford's plans for the future, it is an outlay of what is to be done by September of 1955.