

## Dr. Terrell, Dr. Ott Are Selected For Scholarship Grants

Dr. Edward E. Terrell has been selected by the Summer Institute Program of the National Science Foundation to study botany at the University of Indiana, Bloomington, Indiana. He will be studying botany for the six weeks period from June 22 through July 31. This course is provided for teachers of botany, and professor Ralph Cleland of the Botany Department will be doing the teaching.

Dr. Charles N. Ott has been selected by this same group to study recent developments and significant trends in organic, inorganic, physical, analytical, and biochemistry for teachers of chemistry. He will study for five weeks, from July 20 through August 21, at the Montana State College. Dr. L. O. Binder, Jr., of the Department of Chemistry will be the instructor.

The Summer Institute Program of National Science Foundation was created in recognition of the important role of high school and college teachers in developing our scientific manpower potential. Three hundred and fifty institutes are scheduled to conduct this course during the summer of 1959. Funds are available to provide financial assistance for approximately 18,000 high school and college teachers of science and mathematics.

## NEWS BRIEFS . . .

On Saturday night at 8:00, the Male Chorus of Davidson College and the Choir of Women's College will present Haydn's "Second Mass in C," with orchestra, in the Aycock Auditorium at Women's College in Greensboro.

Ernestine Cookson Milner, Professor of Psychology, will speak on "Giotto" on Friday, the 24th of April, 8:00 p.m., in the lounge of the College Union.

The *Dial*, a fiction magazine, is sponsoring a contest with a prize award of \$1,000 for the best fiction writing of quality entered in their competition. All manuscripts should be addressed to the editor, James H. Silberman, 461 Fourth Avenue, New York 16, New York. Additional details can be obtained by writing to the magazine, or by contacting the editor of the GUILFORDIAN.

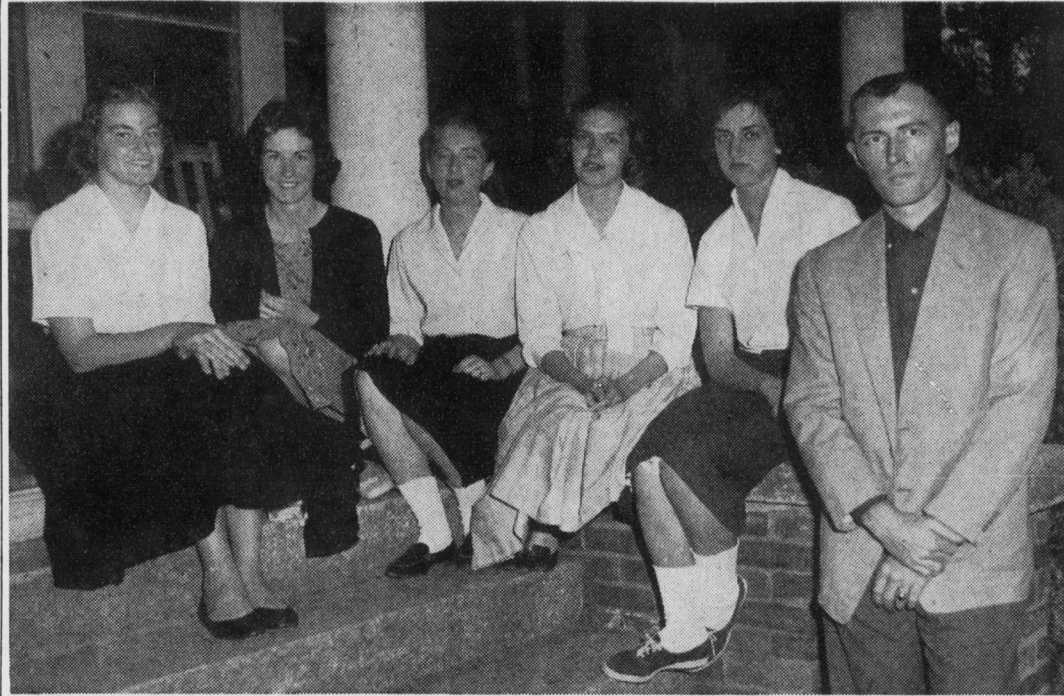
The Future Teachers of America met last week to elect officers for the coming year of 1959-1960. Betty Lou Chilton will serve as president; Arlene Sheffield as vice-president; Betty Lou McFarland as secretary; and Doug Kerr as treasurer.

Becke Blackwell has served as the president for the past year. Mr. Bailey is the faculty advisor.

The Wesley Foundation will hold a picnic at the lake Monday evening at 5:30. New officers will be elected for next year.

Mary Hobbs has invited the women day students to spend the night in the dorm on the Friday before May Day. In this way the girl day hops won't miss "Boy's Mayday."

# Guilford Is Host To North State Press Conference Assoc. Tomorrow



Representing Guilford in the press conference tomorrow will be (left to right): Carolyn Nimitz, Anise Joyce, Helen Brown, Margaret Haworth, Arlene Sheffield and Sid Hart.

## Nine N. C. Colleges To Be Represented

Again this year Guilford will play host to the North State Conference Press Association. The meeting will be held on campus tomorrow from 9:00 a.m. until 2:30 p.m.

Guilford's representatives will be Carolyn Nimitz, editor of the GUILFORDIAN, Margaret Haworth, managing editor, Arlene Sheffield, business manager, Anise Joyce, news editor, Helen Brown, art editor, Sid Hart, sports editor, and Lynn Hundley.

Registration will begin in the College Union at 9:00 and the first session will convene at 9:45. Mr. Robert Register, city editor of the *Greensboro Record* and former Guilfordian will be the guest speaker. After his speech the meeting will divide up into smaller workshop groups to discuss specific problems. The group will have lunch in Founders Dining Hall and then return to the College Union for the afternoon business meeting.

The outstanding event of the meeting will be the presentation of a plaque to the school who has published the most outstanding paper during the school year of 1958-59. The winner will remain a secret until the awarding of the plaque is made. The winning paper has been selected by judges from the Journalism Departments at the University of Wisconsin, University of Nebraska, Indiana University, and Tulane University.

Newspaper staffs from Appalachian, Atlantic Christian, Catawba, East Carolina, Elon, Guilford, High Point, Lenoir-Rhyne, and Western Carolina will be represented.

## New Committee Publishes "B" List

The WSG organized a Scholarship Committee last year for the purpose of stimulating interest in better grades among the women students of Guilford College. There are four members of this committee, headed by Clara Montgomery, vice-president of the WSG for this past year. They are: Julie Trimble, Ginnette Bourdereau, Co-reen Case, and Anne Taylor. The committee gives recognition to all the women students who have a 2.00 average, but not quite high enough for the honor roll, by publishing a list of these students every semester.

They also computed the average of all the women students, by classes. These averages are as follows: 26 seniors had a 1.87 average at the end of the first semester, 21 juniors had a 2.00 average, 64 sophomores had a 1.55 average, and 81 freshmen had a 1.18 average. Since this system is a new one, no previous studies have been made but at the end of the second semester more averages will be computed, and a comparison will be made to find the trend of averages of the women students both on and off campus.

At the end of the first semester, 53 women students had a "B" average or better, with 14 making honor roll grades.

## Earle Spicer, Ballad Singer, To Give Program At Memorial Hall Tonight

Earle Spicer, ballad singer, will present the last program scheduled in this year's Guilford College Special Cultural Events Series, in Memorial Hall Auditorium at 8:15 tonight. Mr. Spicer also appeared on the program for Upperclass Assembly at 10:20 this morning.

Mr. Spicer, a New York baritone, was born on a farm in Acadia, "Land of Evangeline." As a boy he sang in the local church choir, and at college he studied voice, piano, organ, and sang in the glee club and the college quartet and played bass viol in the college orchestra. Later he studied in both New York and London.

Unlike most ballad singers, Earle Spicer is a thoroughly trained concert singer who has sung, for example, Bach, Handel and Mozart as guest soloist under such distinguished symphony and oratorio conductors as Sir Henry Wood, Sir Adrian Boult, Fritz Riener, Albert Stoessel, and others. He has sung for the English nobility, the governor-general of Canada, and at the White House. For three years

he was a feature soloist on one of the leading NBC programs with Donald Voorhees and his orchestra.

While a student in London, Mr. Spicer became interested in ballads and folksongs and made a collection just as a hobby. The music critics of New York, Boston, and London were so impressed by his work in this field that they suggested he specialize in the singing of ballads. Thus, the hobby has become a profession.

Earle Spicer is a singer of manly voice, magnetic personality, down-to-earth informal manner and good sense of humor. He is considered the most "re-engaged singer by colleges today."

His program for tonight, when he will be assisted by several Guilford students in the performance of one or two numbers, consists of traditional English Ballads; "The Rich Old Woman," "The Golden Vanity," "The Ardent Fisherman," "Barbara Allen," "Lord Randel," and "Because I Were Shy," and American ballads and folksongs

"The Little Mawhee," "The Quaker's Courtship," "The Erie Canal," "The Lane County Bachelor," and "John Henry." All these were arranged by Mr. Spicer.

Also, he will sing four selections from Shakespeare, by Gilbert and Sullivan: "Willow, O Willow," from Othello; "When That I Was," from Twelfth Night; "The Nightmare Song," from Iolanthe; and "When I Was A Lad," from H.M.S. Pinafore.

Guilford College students will be admitted free of charge to tonight's program, but others will need a seasonal ticket or a single ticket, which is \$1.00.

## WSG Fashion Show

The WSG is presenting a fashion show next Friday afternoon, at 3:30 in the College Union. This show is open to all the students and interested persons of the community. Montaldo's and Gene Lashley's are sponsoring this show, and both men's and women's clothes will be modeled.

## NEW SCHOLARSHIPS OFFERED TO VIETAMESE STUDENTS

A new scholarship fund has been established by the American Friends of Vietnam to help Vietnamese students further their education in the United States. The Elinor Dubin Memorial Scholarship Fund, named in honor of a former executive secretary of the organization, will be administered by the Institute of International Education.

The fund will make grants to Vietnamese students whose studies in this country promise to contribute to the welfare and development of Vietnam.

The American Friends of Viet-

nam, a private, non-profit organization, was founded in 1956 to promote friendly relations between the United States and Vietnam. In the past, the organization has held conferences, distributed publications and conducted other public information services to further this goal. In addition, grants have been made to Vietnamese universities and gifts of clothing and supplies have been made to the Vietnamese people.

The Institute of International Education is the oldest and largest private multi-national organization in the field of exchange of persons.

## Marshals Chosen; Maurice Raiford Selected Chief

Maurice Terrell Raiford has been chosen as the chief marshal for the year 1959-1960. He comes from Daytona Beach, Florida.

Other members elected to serve as marshals are: Jesse Thomas Copeland, Jr., of Greensboro; Richard Stephen Paul from Philadelphia, Pennsylvania; Ira Nahum Ross, of Forest Hills, New York; Jane Helen Carroll from Greensboro; Rasma Frisbergs, of Guilford College; Margaret English Haworth of High Point; and Anne Marie Taylor of Pilot Mountain.