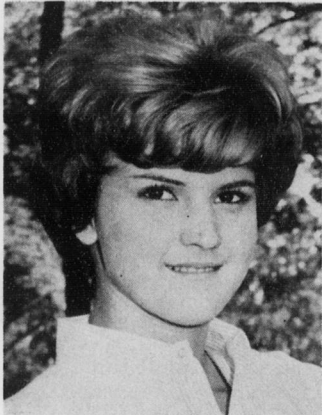


## Roe Pearce Crowned Queen for '63



MISSY MILLS



ANNE SCOTT

### President Bolling Addresses College

The 133rd Anniversary of the Founding of Guilford College was observed here on Friday, November 8, it was announced here by the college president, Dr. Clyde A. Milner.

Highlight of the observance was the Founders Day address by Landrum Bolling, president of Earlham College, the Quaker institution in Richmond, Indiana.

At 10:30 a.m., college trustees were presented to Guilford students and visitors by student leaders. Also, the college Dana Scholars were presented for the first time and received certificates during the program. At 4:00 p.m., a tea was given in honor of Bolling and the trustees. At 6:30 p.m., Quaker students and trustees dined with college representatives from local meetings (churches) throughout the state. President Bolling's address at 8:00 p.m. in Dana Auditorium concluded Founders Day activities.

A unique brochure for the promotion of the liberal arts educational program at Guilford College, formulated by the students participating in the Dana Scholar program last year, was presented by Dr. Milner. This informative brochure is an extension of the one begun several years ago in the campaign for the religious education and music building.

The Founders Day event was in commemoration of an event which occurred November 10, 1830. The school charter was granted January 13, 1834, and New Garden Boarding School (later named Guilford College) opened its doors to 50 students on August 1, 1837.

Homecoming Day is being celebrated in conjunction with the Founders Day event on Saturday, November 9. Some 2,500-3,000 alumni and other guests have been expected for the events covering the two-day period.



### Homecoming Festivities Take Place Today

The 1963 Homecoming celebration here at Guilford is well under way. The events of the weekend began on Friday, November 8, with the recognition of Guilford's Founders Day, an introduction to the student body of the Board of Trustees in the Friday morning convocation.

At 11:00 a.m. there was a faculty reception in the Dana Auditorium for the benefit of visiting alumni and friends. From 10:30 a.m.-1:00 p.m. the various dormitories on campus were holding Open House for the inter-visitation among campus students and viewing of the decorations by the students, alumni, friends and judges.

Luncheon was held from 12:00-1:00 p.m. in the Founders Hall cafeteria. At 2:00 p.m. came the kickoff for the Homecoming football game, the Guilford College Quakers playing the Maryville Highlanders from Maryville, Tenn., on the Armfield Athletic Field.

At 2:00 p.m. the spectators at the game witnessed the commencement of the annual Homecoming Show during the halftime of the game. After the opening speeches of welcome by the Alumni president, Mr. John Googe, and the president of the college, Dr. Clyde A. Milner, the parade of floats and cavalcade of convertibles carrying the reigning queen, Miss Kay Stabler and the fifteen contestants for the 1963 title made a circuit of the football field. As the cars carrying the current contestants passed the area of the Guilford spectators, the name of each girl was announced, along with her campus organization sponsor, and she was presented with a rose by the 1962 queen. After each girl had been announced, the cavalcade made a complete tour of the field, separating at the gate with the five girls named for this year's Homecoming Court returning to the Guilford stands. The girls were escorted from the cars by Mr. Bob Davidson, president of the M.S.C. and David Miller, president of the

Student Government, and the moment of the crowning arrived. The new Homecoming Queen, Miss Bette Roe Pearce, a freshman from Greensboro was crowned and her Maid of Honor, Miss Beverly Moore, a senior from Charlotte, was given a bouquet of roses. The remaining members of the court were Miss Mary Davis Riddle, a sophomore from Fayetteville, sponsored by the Student Legislature; Miss Anne Scott, a sophomore from Pilot Mountain, sponsored by the sophomore class; and Miss Missy Mills, a sophomore from Bethesda, Md., sponsored by the cheerleaders.

This year's queen, Roe Pearce, is a psychology major, who lives in the New Woman's Dorm, was sponsored by the newly organized Young Democrats. Miss Pearce graduated from Page High School where she reigned as homecoming maid of honor and was voted best looking in her senior class. Roe has been active on the cheerleading squad at Page and her hobbies are tennis and basketball. Miss Pearce holds the title of Miss Flame from the city of Greensboro.

The Maid of Honor, Miss Beverly Moore, is a psychology major, president of the New Women's Dormitory, business manager of the A Cappella Choir, and was sponsored by the choir. Beverly's hobbies are swimming, bowling, and tennis. During her high school years she was voted best-looking and most popular in her class.

Mary Davis Riddle is a resident of the New Women's Dorm, a member of the Student Legislature, a cheerleader and a member of the 1962 Homecoming Court.

Ann Scout, an elementary education major, resident of the New Women's Dorm, is interested in basketball, music and tennis. Ann was a member of her high school homecoming court and a runner-up in the American Legion Beauty Pageant in Pilot Mountain.

Missy Mills, another member of the 1963 Homecoming Court, is a resident of the New Women's

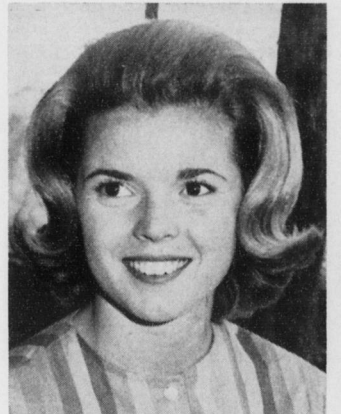
Dorm. She was a majorette and a pom-pom girl in high school and played girls' football. Her hobbies include football, piano, horseback riding and modeling. Miss Mills was the 1961 Miss Teen Queen from Maryland.

This year's Homecoming program also included the presentation of all the girls who were nominated for the title. These girls are: Miss Jane Simpson, a senior sociology major from Charlotte, sponsored by the Social Committee; Miss Lydia Hendricks, a sophomore physical education major, sponsored by the Women's Athletic Association; Miss Kay Daniels, a senior education major from Denton, sponsored by the Women's Student Council; Miss Susan Lee Brown, a senior elementary education major from Port Washington, Long Island, N. Y., sponsored by the senior class; Miss Dahl Etchison, a junior history major from Westbury, N. Y., sponsored by the Men's Student Council; Miss Nancy Eakin, a sophomore sociology major from Greensboro, sponsored by the Guilfordian; Miss Gloria Phillips, a sophomore history major from Greensboro, sponsored by the Quaker; Miss Jean Redding, a junior elementary education major from Greensboro, sponsored by the junior class; Miss Karen Schloesser, a freshman from Swarthmore, Pa., sponsored by the freshman class; Miss Frances Ashburn, a freshman from Mount Airy, sponsored by the Monogram Club.

This evening, Saturday, November 9, there will be a reservation dinner for alumni and friends in the Founders Hall cafeteria. Tonight at 8:00 p.m., the annual Women's Athletic Association Homecoming Dance and Reception will be held in the basement of Founders Hall, featuring the Harold Knall Orchestra. Tickets are \$1.25 per couple and \$1.00 stag and may be purchased from any member of the W.A.A. Tickets at the door may be purchased for \$1.25. Alumni and friends as well as students are invited to attend.



Maid of Honor  
BEVERLY MOORE



MARY DAVIS RIDDLE

### Hallowe'n Feted At Founders Feed

Hallowe'en night, October 31, the Slater staff served a dinner in celebration of the event. Mr. Lee, the new coordinator of the Slater concession in Founders Hall agreed to work with the Student Legislature in planning and executing the dinner.

The cafeteria was decorated in a traditional manner with black and orange crepe paper streamers, jack o'lanterns, corn stalks, crescent moons and black cats.

Barry Roth acted as emcee and commentator for the evening as he greeted the students at the door and traveled throughout the room commenting on the costumes and interviewing some of the students.

Near the entrance to the cafeteria from the dormitory was located a large table on which was a display of Hallowe'en decorations, an apple-bobbing station, and a "cauldron" from which was served fruit punch "witches brew" by Beverly Wesley the visiting witch for the evening.

Students had been encouraged to wear costumes or casual clothes and many varieties of garb were apparent. A group of girls from the New Dorm, dressed in Guilford College nightshirts and beanies, came as a basketball team. The Dean of Women and the head resident at Mary Hobbs (the "Witch Mitch") made an appearance in costume. Some of the girls from Mary Hobbs came depicting various stages of pregnancy from 5-22 months and "expecting to have a really big Hallowe'en."

Prizes were awarded for the best men's and best women's individual costume. The judges were David Miller, Bob Davidson, Carolyn Kirkman, and Karen Baldwin. Plans for other such holiday dinner celebrations are being made.