

The Garbage Can

By Gary Lessner

Nestled in the gently rolling Piedmont Plateau and shaded by groves of giant oak and hickory trees. . . In case you're wondering, this describes where you are presently spending your days and nights. . . and weeks and months and years also. This little corner of the GUILFORDIAN will be devoted to opening new gateways of thought and inquiry to each and every Guilfordian. Per chance these efforts will not be in the same direction or depth that is advocated by the faculty but, to be sure, it is hoped that the items contained herein will be thought provoking and stimulating.

Now to get started.

Extra-curricular activities play a large part on all college campuses, Guilford no exception. Why only last week a student bowling league was organized on the third floor north, of the New Men's Dorm. Unfortunately bowling generates quite a bit of noise especially in dormitory hallways. For this reason, and about 250 others, the league was immediately disbanded. A further effort at creating a new sport involving dumb bell rolling was also discontinued.

The Catawba College gymnasium was redecored the night before the football game by that other institution. It has been reported that the face lifting was not entirely in tune to that which its college officials had in mind. However we must remember change represents progress . . . in one direction or another.

And speaking of Catawba. Former Indian star football and basketball player, Bucky Pope, commented in a radio interview that Jimmy Williams was the toughest quarterback he had faced in college. Pope is now a rookie star with the Los Angeles Rams.

Isn't it interesting how some of the biggest snowmen are always the first to get really snowed? Holy matrimony awaits two of the above mentioned types. Richard Jones, '63 goes down the drain early in March followed by Barry Roth '64, a few weeks later. That's the way love is, that's how it goes. (From the song of the same name).

Congratulations to our cheerleaders on the innovation of many new cheers in their repertoire. Keep it up girls.

Look for a pleasant change in the method of family style service in the near future. Also, chalk up Sadie Hawkins night as another success in the long line of innovations inspired by Mr. John "Curly" Lee.

I hate to criticize, but the Union has become one large sized combination garbage can and ash tray. Seriously now, there is no reason why those who frequent the place can't endeavor to use the trash cans and ash trays which are sitting there awaiting used cups and butts.

I wonder what the chances are that some responsible organization on campus will try to bring professional entertainment to Guilford. Two years ago the Brothers Four performed here. Last year it was the Drifters. Let's not stop now.

The Traffic Committee of the Student Legislature is to be commended for the excellent job they have done so far this year. Compliments to Larry Bock and crew.

The Choir has been invited to sing at the New York World's Fair over the first weekend in May. More about that later.

Don't forget not to cut any classes during these three days following Thanksgiving "holidays". After all, we wouldn't want anyone to actually get home and celebrate this traditional family holiday with their families.

The 24th marked the first anniversary of Guilford's required memorial service to President Kennedy.

One actually comes to the realization that he is a senior when he is cheerfully reminded by his major professor that he'd better get his butt working on a thesis if he wants to get out of here. Incidentally, if you're not busy some day, check out the thesis catalog in the Library. Thesis have been written on some pretty interesting topics. And vice versa too.

Someone once said that it is never inappropriate to close a column such as this with a quote from a famous poet. Therefore, since it is autumn, it is only fitting that this article close with the lines of that oft quoted ode o fall:

Leaves are falling on my head,
Some are yellow, some are red,
But I don't care, they don't hurt.

Honor Roll

Names of all students achieving a quality average of 2.50 on work done the previous semester constitute the honor roll. (Summer school averages are combined with those of the previous semester.)

Sophomores, juniors, and seniors thus listed are extended the privileges of the honor roll: They are not required to attend class and are not held strictly for daily preparation although it is understood that they will maintain a high quality of work, and that they are responsible for all materials covered by the course. They are required to take announced quizzes, quarter and semester examinations.

SENIORS

Mary Lou Bell	2.82
Robert Bridgers Foster	3.00
Judith Ann Hill	2.60
Rebecca Anne Payne	2.50
Vinton McIntire Prince, Jr.	3.00
Patricia Ann Sperry	2.88
Rebecca Anne Stoue	2.84

JUNIORS

Stephen Conrad Ausband	2.60
Rachel Diana Charles	3.00
Gloria Annette McElvy	2.80
John Thaxton Mauzy	2.96
David Henry Parsons III	2.63
William John Probeck	2.60
Sam B. Rose III	2.78
Thomas Wilbur Taylor	2.80
Ellen Elizabeth Voss	3.00

SOPHOMORES

Judith Lane Allen	2.76
Bonnie Kathleen Bennett	2.60
Charlida Carroll	2.64
Charles Christopher Edwards	2.60
Roberta Gail Floyd	2.80
Mary Charlene Jones	2.81
Joan Stephens Kieffer	2.52
Cheryl Kaye Riley Layton	3.00
Clarao Macon	2.80
Carolyn O'Dene Marion	2.88
David Nichols O'Steen	2.75
William Thurman Partin, Jr.	2.80
James Stephen Phillips	2.60
Jane Claire Rankin	2.80
Myra Annette Russell	2.60
Virginia Lynn White	2.56
Craig Richard Wiggins	2.60

MSC WEEKEND

In April the Men's Student Council is planning a big fiesta for Guilford College students. It shall be known as the MSC Weekend. A concert by some well known artist is planned for either Friday night or Saturday afternoon. This will be followed by a combo party that Saturday night. Both events will be free for Guilford College students.

In order to achieve its plans the MSC seeks a goal of \$1,000. The MSC is presently trying to raise this money through the sale of doughnuts. MSC Representatives will be through the dorms regularly in order to promote this sale. The success of the MSC Weekend depends upon it—so buy.

1964 Basketball Schedule

- Nov. 28—Charlotte (H)
- Dec. 1—St. Andrews (A)
- Dec. 3—Wesleyan (H)
- Dec. 5—Methodist (H)
- Dec. 8—Pfeiffer (A)
- Dec. 10—Charlotte (A)
- Dec. 14—St. Andrews (H)
- Dec. 17—High Point (A)

The Senator

BY HAROLD CLARK

Has the defeat of Senator Goldwater at the polls signaled a fatal blow to the Republican Party? Many have said that it does, and at least one major national magazine prophesied that it would as long ago as last June. It is likely that in the following months we will witness the Republican party traveling the way of the Progressives, the Populists, the Greenbacks, or the Mugwumps? Or can we expect to see it reduced to a minor party such as the Theological Party, or the Socialist Party? The answer to all these questions is a resounding no!

In this election the Republican Party cornered twenty-six million votes against an incumbent that had relative peace, (Rarely is it your father or brother that is killed in South Vietnam, only 290 Americans have died this way. Only 290 American families have had to bear that kind of direct contact with the war. Besides, as President Johnson pointed out while campaigning in New England, more citizens are killed on Texas highways in one month than have been killed in South Vietnam in three years) prosperity, and built in campaign charges against his opponent (thanks to the pre-convention efforts of Misters Rockefeller and Scranton). Only twice in this century has an incumbent President been turned down by the people. Once in 1912 when President Taft had to fight both Roosevelt and Wilson. The other time in 1932 when President Hoover had to bear the depression on his shoulders when he fought Franklin Roosevelt. Peace and Prosperity are hard things to fight during a campaign, and as one political scientist put it, "You can't beat 'em." *National Review*, a magazine very favorable to the Senator, admitted that the chances for Goldwater's election were one in five. Goldwater and the Republican Party faced fantastic odds, and lost.

A party needs three things to survive. The first is money, the second is workers, and the third is organization. The Republican Party after this election still has all of these. It has over \$50,000 in its coffers as a result of this last campaign's appeal for funds. Over 1,300,000 small contributors gave to this campaign. No campaign in history has ever had this much popular, financial support. Republican headquarters all over the nation were flooded with helpers during this election. It had an abundance of workers. And, despite the fact that there is now a movement to unseat the National Republican Committee's chairman, Dean Burch, there is still a strong Republican organization in the country.

Statesmen

BY DAVID MOCKFORD

The question on the lips of practically all people who are even passively interested in politics is, has the Republican Party really fallen flat on its conservative face. Through observation of the recent halocaust, an opinion of this nature could seem to have very substantial grounds; but alas, it is not true.

The vital questions are who will take the reigns and what direction will the buggy travel. I believe that the American public has amply demonstrated its dislike of the conservative philosophy and that any man, who is or was a proponent of this belief, had better take a long look at some other field of endeavor.

Mr. Goldwater is as politically dead as any one individual could get. If he were to attempt to maintain control of the party machinery, I believe that this would only compound the injury already suffered.

The fault for the massive defeat can not be laid solely at the feet of Mr. Goldwater. A great deal of it must fall upon the shoulders of the hierarchy of the Republican Party. Their optimism toward a victory in 1964 after a defeat in 1960 must, and evidently was, somewhat dampened. To review, they ran a man who had a good record, was vice president of the United States, and had the support of the most well-known and best liked political personalities of the day against a man who had only a good record and great personal appeal. They lost.

There could be little hope of beating an incumbent with a good record and one of not only the finest personal appeals of the day, but rather of the history of the United States.

President Kennedy's death served only to strengthen the Democrat's hold, and with a superb political master at the helm, victory was inevitable. The Republican Party's defeatism, their willingness to lie by the wayside until a favorable opportunity developed was their downfall.

The Republican Party needs new life; personalities that will capture the imagination of the public. They need to follow through with a overall firm support of a unified political appeal.

The Democrats must not let the present stability go to their heads. They must think in very good terms of a possible swing that will favor the Republicans. This swing may be caused by the Democratic landslide; a reaction by the voting public initiated by the centralization of power issue.

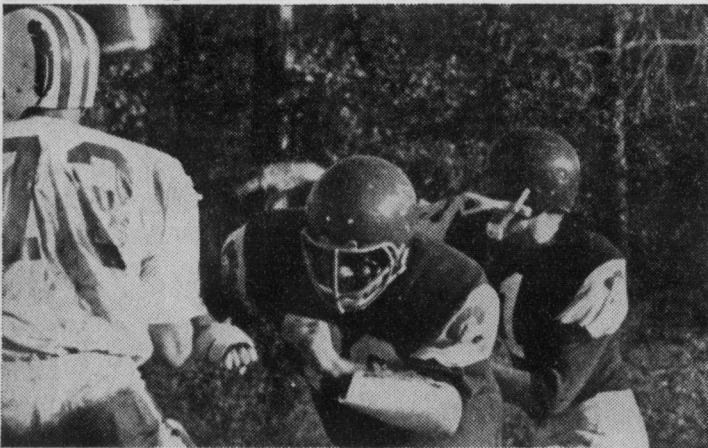
For you people who like to speculate, I should like to suggest the following: President Johnson will not run again; Hubert Humphrey will make a bid for the nomination but will be defeated by Robert Kennedy; And Mr. Kennedy will be running against Governor Romney of Michigan. If this situation develops, the presidential race in 1968 will be a very close one with a slight edge going to Kennedy.

The challenge to the Republican Party in the next four years is one that calls for strength, unity, and initiative.

JOYE'S 66 YARD RUN

Continued from Page One

downs had there not been just one determined tackler in the way. But that all came to an end this weekend. In the third quarter Billy Joye found himself more determined than any tackler out there, and there were many that came his way. This time he eluded them all. It was something that both he and his fans deserved. What a fabulous way to end a fabulous career!



Burchette throws . . .



Craddock catches for 22 yards.

HAM'S SUNDRY STORE

AYCOCK, MADISON, AND FRIENDLY ROAD
DELICIOUS FOOD — KOSHER STYLE ALSO

Special—Imported Pipes and Smokers Accessories
"The nicest stop on your way to town or school"

GUILFORD COLLEGE REXALL STORE

"We appreciate your business"

VILLAGE TEXACO STATION

"Good service is our business"

5617 FRIENDLY ROAD

TELEPHONE 299-9904