

# Quakers Face High Point Tonight

## Guilford Looking For Sixth Headline

by GENE KEY

Prior to the beginning of the 1964-65 Guilford College basketball season, this corner predicted that in spite of the fact that the team would be freshman-dominated, the Quakers would capture "more than one" headline this season.

This prophecy has been fulfilled—and then some. Coach Jerry Steele's cagers have an 8-5 record, a fantastic clip for such a young team in its first year in a rebuilding program—in a conference containing the number three team in the nation! As they go into the pressure-packed tourney at Lexington, the Steelmen will be 8-6.

What were the headlines?

(1) Guilford defeats Pfeiffer 55-21, at their place, in conference opener . . .

(2) Guilford carries High Point into overtime at High Point . . .

(3) Guilford plays High Point in Greensboro Coliseum (losing), playing to largest crowd ever to see a CC game . . .

(4) Guilford, after losing two close road games to ACC and Appalachian, rebounds with win over WCC at their place, 64-57—the second home loss by WCC in 42 games . . .

(5) Guilford dumps powerful 2nd place Lenoir Rhyne—2nd consecutive "big" win!

What have been the factors in the surprising surge of GC basketball? First, credit must be given to the wily coaching and scouting jobs by Jerry Steele and Roy Williams. Next must come the play of big Bob Kauffman, along with the value of having a "good big man" on defense. Bob has not been the big consistent scorer, but is dangerous and takes special defensive coverage.

Leon Young has been able to play varsity ball, changing from pivot to forward, quicker than expected! Leon, 6'5", has fantastic speed-strength ratio, and at times leaves fans wide-eyed and gaping



Why it's HENRY LOGAN! The freshman sensation from Western Carolina is shown here doing something to High Point. We'd definitely like to play against HENRY in the semi-finals.

with demonstrations of the combination.

However, the surprise must be Tom Loftus. A tiny freshman, he has handled a back court assignment with the poise of a veteran. He has been a dangerous shooter. Says Tom Quinn, High Point coach, "He's going to be one of the conference's outstanding outside shooters." Loftus has played, despite the sound talents of Lloyd Turlington, senior, and Wayne Motsinger, sophomore, being readily available—which brings up a timely subject: depth. With these two, along with

freshmen John Brooks, Ed Fellers, Rod Gaylor, and Byron Lawson, Coach Steele has put out many fires—and has started a few when business seemed slow! Said simply, the Quakers have a bench that is the envy of many rivals!

But, let's give credit where it is due. Take the case of Dave Odom. Dave was "recruited" from Coach John Stewart's football team, where he played second team quarterback, and has been developed by Steele into one of the finest back court men in the state. Let's face it: he's great! He's cool, a good shot, a great quarterback (first team in basketball) and works best under harassment. His clinging defensive play is good, and he seldom has been in foul trouble.

And, what can't be said about Chuck Scott? These are some of the things that have been said: "Branson is great, but I'll take Scott," or "Henry is sensational, but Scott is a better rebounder and team player," then perhaps "Kirk Stewart is tops, but Scott's play is consistently great," and so on. In short, Chuck Scott is the finest in the Carolinas' Conference!

The forty percent experience in the starting five, represented by Scott and Odom, is the driving force behind Guilford's lightning-fast emergence as a CC basketball contender. Odom's demise via the diploma route will leave some "big" little shoes to fill. Also, Luke Turlington has contributed a great deal to Guilford College basketball, and his experience will be missed come next November. Otherwise, the formidable upstarts will be intact, with some reinforcements.

But before we get into that, let's have a quiz. Will the Quakers' next headline be this week?

## STEELE NOT UPSET . . . JUST LOOKING FOR ONE!

Sunday afternoon the Carolinas Conference draw was held and Guilford fans almost died when Tournament Queen Clara Neal drew Guilford to play against High Point in the first round . . .

At 7:30 Sunday night, Jerry Steele was hunched over a movie projector in one of the inner upstairs offices of the gym. He and Roy Williams were reviewing films of a recent Guilford-High Point game. They would work until early Monday morning.

"I don't think we got a bad break," said Jerry Steele. "You can't lose tournaments by drawing names

out of a hat. The team that wins the tournament is going to have to play three good nights of basketball, regardless of whom they play. And if you can't play three good games, you might as well pack your bags."

Coach Steele is entirely correct. When we consider the fact that seven of the eight tournament teams have won more than half of their Conference games, it is very easy to see why the road to the championship will be a rocky one.

Are there any advantages to drawing High Point in the first round? We'll know tonight!

## Conference Tournament Pairings

High Point (1)			
Wed. 9:15			
Guilford (5)			
		Fri.	
Lenoir Rhyne (3)			
Wed. 7:30			
Western Carolina (7)			
			Sat.
			8:00
Pfeiffer (2)			
Thurs. 9:15			
Atlantic Christian (8)			
		Fri.	
Appalachian (3)			
Thurs. 7:30			
Elon (6)			

## The Guilfordian

Second-class postage paid at Greensboro, N. C.

Published bi-weekly except during vacation and examination periods by the students of Guilford College.

Editor-in-Chief . . . . .	Hank Siegel
Associate Editor . . . . .	Michael King
Managing Editor . . . . .	Gary Lessner
Business Manager . . . . .	Wesley Sexton
Sports Editors . . . . .	Dick Dierker
	Paul Schettler
Exchange . . . . .	Karen Hamilton
Advisors . . . . .	Forrest Altman,
	Gene Key

### STAFF WRITERS

Fayette Inman	Porter Dawson	Ric Schumann
Harold Clark	Andy Hines	Tom Taylor
Hudson Graham	Dave Mockford	Libby Voss
Pat Johnson	Sam Rose	Susan Rees

## College Cleaners

DRY CLEANING IN ONE DAY!

With Special Student Rates

5713 Friendly Road

BILL SIMMONS, Owner

## WESTERN AUTO STORE

Davis Tires	PHONE CY 9-9495	Truetone
Wizard Batteries	Box 8106	Radios and TV's
Auto Accessories		Major Appliances

GUILFORD COLLEGE, N. C.

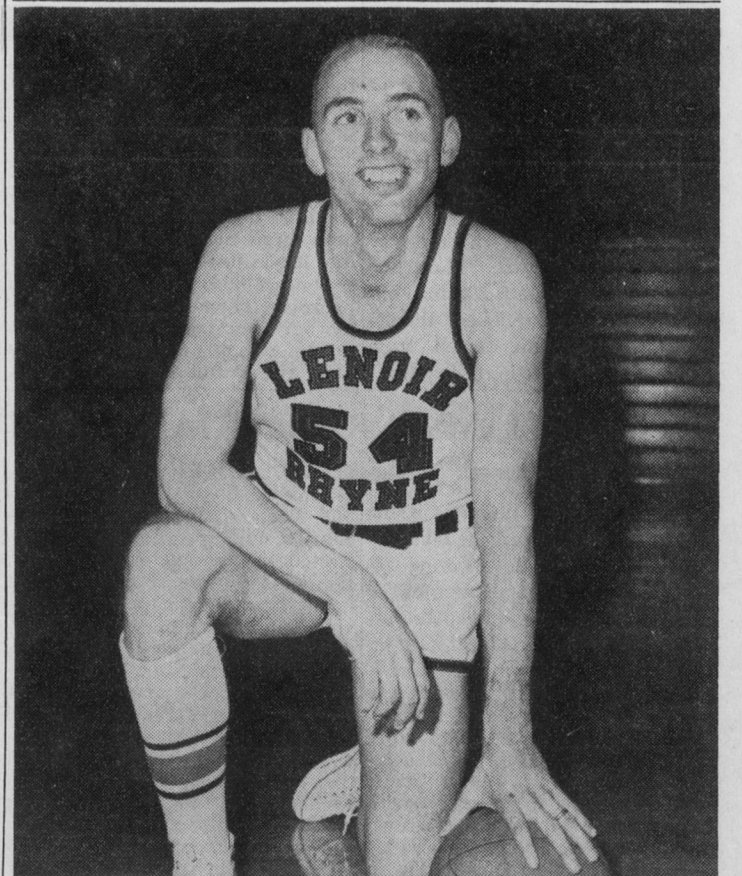
## FRIENDLY ROAD DRUG

In The Quaker Village

Shaving Needs - Cosmetics  
Dental Needs

### Go Get 'Em, Guilford!

### Destroy the Lizards!



If we don't play Western in the semi-finals we would have to settle for ED MIASTOWSKI and Lenoir Rhyne, who would like to play us again.