

# BASKETBALL PREVIEW

by Fred Brown

This year Coach Jerry Steele has a new assistant by the name of Jack Jensen. Coach Steele "recruited" this personable young coach from Elkin High School where he was head basketball coach for the past two years. Coach Steele and Coach Jensen became acquainted with each other when they were students at Wake Forest. Originally, Coach Jensen comes from New Jersey where he first learned the skills of the game we Quakers tend to really like.

According to Coach Steele and Coach Jensen, some of the main weaknesses of the Quakers will be lack of experience, depth, and overall height. Enthusiasm, hustle, and good physical condition are a few of the strong points of the "Quakes."

Probably the best way to present the Quakers is in a "Thumbnail Sketch:

**Chuck Scott** - Chuck, the only Senior on the squad, scored over 18 points a game last year and was all Carolina's Conference - has been looking good in practice - Chuck is the Captain of the 1965-66 team.

**Wayne Motsinger** - Only Junior on the team - gives 100% effort all the time - in contention for a starting position.

**Rooney Gaylor** - One of the best outside shooters on the squad - vastly unproved overall since last year - should be a big help this year.

**Byron Lawson** - The "utility" man for the Quakers, he can play any position - solid performer.

**Tommy Loftus** - Presented the "Quakes" with some very good nights last year - needs to be more consistent - has the potential to be one of the best all-around guards in the conference.

**Ed Fellers** - Has gained weight for rebounding strength - vastly improved - may start at either guard or forward.

**Leon Young** - "Tying" his game together now - fastest man on the squad - looks real good.

**Bob Kauffman** - Not enough can be said about his potential - should be a top flight pivot man when he recovers from two bad accidents - looked great in spring practice - has good size, 6'8", 240 lbs.

**John Brooks** - Recovering from a knee operation - looking real good - will play forward and center.

**John Hedrick** - Transfer from U. N. C. - should be eligible by second semester - has potential.

**Bob Bregard** - Looks good at times - defense improved - good passer.

**Edgar Parker** - Brother of Elwood Parker - "Leftie" - presently bothered by arm injury.

**Jerry Mitchell** - Real hustler - good shooter from 12-15 feet.

**Ernie Newton** - Good jumper - has nice inside moves - could develop into a really good player.

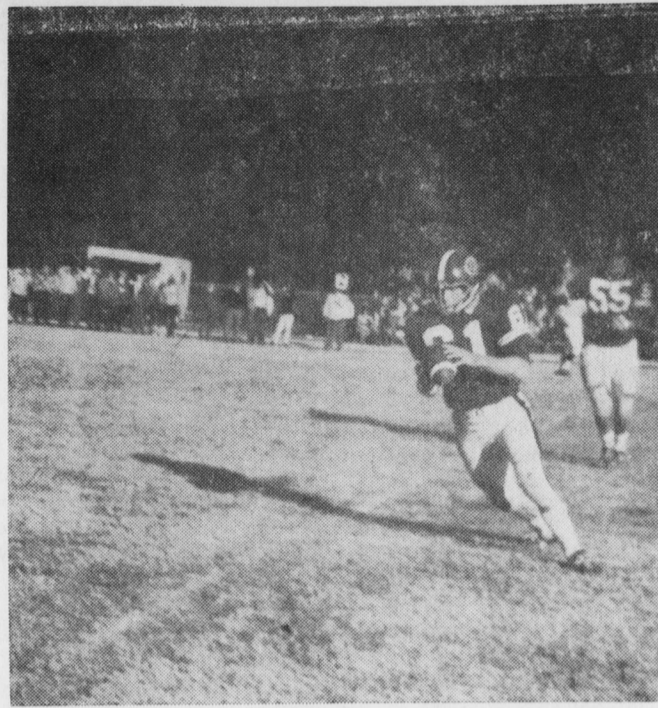
**Richie Allen** - Has good size 6'5", 205 lbs. - good outside shooter - has to become more aggressive on the "boards" - should see much action this year.

**Allen Migdall** - Presently has broken arm - a good playmaker - looked sharp in practice - comes from Lotus high school.

**Marlyn Scott** - Really improved - worked all last year on his own - lots of desire - could be asset to the squad.

**Trainer and Manager** - **Danny Southerland**

**Assistant Manager** - **Mike Hackett**  
These boys keep the gym in A-1 shape - are a real asset to the team.



## Quakers Whip Newberry

Over 5,000 fans, the largest single crowd ever to attend a Guilford College athletic contest, saw the most thrilling victory for Guilford and the worst defeat for Newberry of the season, in Guilford's annual homecoming game. It was the first time since 1946 that Guilford has beaten Newberry. Newberry has beaten the Quakers thirteen consecutive times. The Quaker team beat Newberry by more points than any other team has so far this season with a score of 25 to 7.

Newberry, having been beaten by Lenoir Rhyne and Appalachian, came into the game with a conference record of 1 and 2. Guilford's record at this time was 1-1, and their overall record was 4 wins 2 losses. Guilford was then tied with Western Carolina for third place in the conference standings.

The Quaker team was sparked by freshman quarterback, Bubba Brockwell. This was to first starting opportunity Brockwell has had this year, but he played like an "all American." Bill Burchette, the regular quarterback, was absent due to an injury sustained in practice the Wednesday before the game. The substitution was a surprise maneuver.

The first quarter was scoreless, being mainly a defensive battle. Then, in the second quarter, Tommy Grayson intercepted a pass, thrown by Newberry's Benji Kirkland, on Guilford's 30 yard line and returned it to Newberry's 40. Brockwell, on the next play, fired a pass to Danny McKay in the end zone. Guilford now led by a score of 6-0. Newberry's only chance to score in the first half came late in the second quarter on a pass interception. They marched to the Guilford 21 yard line where a stubborn Quaker defense stopped them cold. Newberry was then forced to try for a field goal on fourth down. The attempt failed, and Guilford still led 6-0 going into the second half.

Guilford's second score came late in the third quarter, when the Quaker offense marched 70 yards to Newberry's 17 yard line. Quarterback, Bubba Brockwell, then

threw a pass to McKay in the end zone for our second score. The score was now an impressive 12-0.

Newberry, in the same quarter, scored their first and last touchdown of the game. Their touchdown drive was sparked by a 55 yard punt return to the Guilford five yard line. Here our defensive unit put on a remarkable show of strength and ability, but Newberry gained the short yardage needed and went over for the score. However, it took them four downs in which to do it. Their kick was good, and the score was an uncomfortable 12-7. Guilford, in the fourth quarter, lengthened the lead with another touchdown, led by Tommy Grayson's second interception of the game. The score was now 18-7.

What took place next, was one of the most remarkable defensive plays of the game and of the season for Guilford. Newberry, on an impressive drive, had marched to Guilford's six yard line. On the next play, they gained five yards to Guilford's two yard line. It was now second down, and it looked like a sure Newberry score, but our defense, led by Ronnie Winslow, stopped Newberry dead in their tracks for the next three plays; and Guilford retained possession of the ball.

Our last score came when Tommy Grayson succeeded in bringing the ball to Newberry's three yard line. Boccuzzi then came into the game and went over for the score. Grayson then kicked the extra point which made the final score 25-7. This kick boosted Grayson's private point collection to 60 points, the highest in the conference.

With this win, the Quakers have more wins this season than any other Guilford team since 1948, with a record of five wins and two losses.

### STATISTICS

	G	N
First downs	11	10
Rushing yardage	171	125
Passing yardage	92	70
Passes	619	5-12
Passes Intercep. by	4	1
Penalties	20	0
Punts	6-43-5	3-39

## Guilford Edges Jackets

### GRAYSON RETAINS SCORING LEAD

(by John Morgan)

Tommy Grayson, the leading scorer in the Carolinas Conference, exploded for 141 yards in 5 carries to lead the Quakers to a thrilling 17-14 victory Saturday over Randolph Macon College.

The first Quaker score came with 12:30 remaining in the third period when wingback Danny Wheeling carried the ball 73 yards

for the tally. Grayson's two-point conversion was good and The Young Friends led 8-0.

Only three minutes after the Quaker's first TD, Tommy Grayson kicked a 20-yard field goal to give Guilford a 10 point margin.

Midway through the fourth period the Quakers scored again, this time on a 17 yard pass from quarterback Bubba Brockwell to wingback Henry McKay. Grayson's PAT was good.

## Coach Stewart, Profile

by Fred Brown

Coach Stewart was born in Flint, Michigan; and at the age of six moved to Virginia. In Virginia he became interested in football by playing guard in "sandlot" football.

In High School he was a tailback in the "single-wing" offensive formation until his senior year when he switched to fullback. That year his high school was undefeated. During his high school tenure as an athlete, Coach Stewart lettered in four different sports.

When his college years began, Coach Stewart, influenced by his parents, decided to become a dentist. At Ferrum Jr. College he played all sports while pursuing his pre-dental studies. From Ferrum he transferred to the University of North Carolina at Chapel Hill where he was ineligible athletically for one year. After he became eligible he played tailback (once again in the "single-wing" formation) and defensive halfback until an injury curtailed his football career. He then concentrated on high jumping and boxing. In fact Coach Stewart became so adept at boxing that he was granted a two-year teaching fellowship in boxing and physical education. He is the only undergraduate at U. N. C. to be granted a teaching fellowship.

The summer after he finished pre-dental, he coached sandlot baseball and managed a city recreation program. This was the turning point in Coach Stewart's career. He returned to school and majored in physical education, in addition to pre-dental science. Soon after graduation he received a coaching job at Evergreen High School, in Columbus County North Carolina, which has since been consolidated. After coaching at Evergreen for to year he went to neighboring Whiteside High School and coached for three years.

Leaving Columbus County, he moved to Garner where he was athletic director and head coach for seven years. During those seven years, Coach Stewart's Garner team became one of the strongest 2-A teams in the state. Frequently they gave 4-A teams such as Raleigh and Rocky Mount more trouble than they could handle. Several of the boys on that team have since come to Guilford to participate in sports. Many of the upperclassmen remember such boys as the Joye Brothers, the Buffalo Twins, Micky Faulk, and Paul Updegraff.

During his twelve years of high school coaching, Coach Stewart has coached all sports at one time or another and has suffered only one losing season in just one sport - football.

He was an assistant for one year under Coach Appenbeller and then in 1963 took over the reins as Guilford's head football mentor. The 1963 season was a nightmare for all Guilfordians as our team was 0-10. The next year, after administrative and financial support for more and bigger scholarships, we were 4-5. This year under the guidance of Coach Stewart, Coach Lambeth and Coach Johnson, the team ended 8-2.

For a change, Coach Stewart has had depth on the bench which has helped offset the difficulties caused by serious injuries.

In 1964 Coach Stewart was elected "Coach of the Year". It appears that he is in the running for this honor again since he is heading the "team of the year".

Randolph Macon scored first in the third period on a 10 yard pass play and added their final touchdown on a 4 yard pass play from quarterback Dave Wetzel to end Bob Overton. The two-point conversion was good but the Quakers emerged with the victory.

The Quaker's record to date is 6-2 overall and 2-1 in the conference.

## ROSTER

1965-1966

\* - Starters from last year

Name	Pos.	Ht.	Wt.	Year	Home Town
Rodney Gaylor	G	6-2	160	2	Belhaven, N. C.
Bob Bregard	G	6-2	170	1	Syracuse, N. Y.
Bryon Lawson	F	6-2	177	2	Winston-Salem, N. C.
Tommy Loftus*	G	6-1	172	2	Norfolk, Va.
Wayne Motsinger	G	6-0	176	3	Winston-Salem, N. C.
Edgar Parker	G	6-0	168	1	George, N. C.
Jerry Mitchell	G	5-10	167	1	Winston-Salem, N. C.
Ed Moore	G	6-0	172	1	Lake City, Fla.
Chuck Scott*	F	6-4	185	4	Greensboro, N. C.
Ed Fellers	F	6-5	195	2	Columbia, S. C.
Leon Young*	F	6-5	195	2	Enka, N. C.
Bob Kauffman*	C	6-8	240	2	Scarsdale, N. Y.
Ernie Newton	F	6-3	185	1	Ledford, N. C.
John Brooks	C	6-3	200	2	Williamson, W. Va.
Richie Allen	F	6-5	205	1	Rutherford, N. J.
Allan Migdall	G	5-10	150	1	Norfolk, Va.
Marlyn Scott	G	6-0	175	1	Bennett, N. C.
John Hedrick	G	6-0	177	2	Greensboro, N. C.

Manager, Danny Southerland; Asst. Manager, Mike Hackett

## SCHEDULE

November 27	Lenoir-Rhyne	Home
November 29	Wilmington	Home
December 4	Charlotte	Home
December 7	Pfeiffer	Away
December 8	Newberry	Home
December 15	High Point	Home
*December 17	Western Carolina	Greensboro Coliseum
*December 18	Elon	Greensboro Coliseum
**December 30	Tournament	Wilmington N. C.
**December 31	Tournament	Wilmington N. C.
January 1	Catawba	Home
January 8	Elon	Home
January 12	A. C. C.	Away
January 26	High Point	Greensboro Coliseum
January 29	Newberry	Away
January 31	Presbyterian	Away
February 3	Catawba	Away
February 5	A. C. C.	Home
February 9	Presbyterian	Home
February 12	West Carolina	Away
February 14	Lenoir-Rhyne	Away
February 19	Pfeiffer	Home

\*Gate City Classic, Greensboro Coliseum

\*\*Holiday Tournament, Wilmington N. C.