

# The Guilfordian

## SPORTS

Volume L

March 26, 1966

Number 9

### Cagers End 'Best Season Ever'

On a typical spring day late in March, Coach Jerry Steele sat in his office talking over the past season. "An 18-8 record is a good season, certainly more ball games than we ever won before. We weren't very consistent, but on certain nights we could have . . . Coach Steele paused here, then rephrased his praise: ". . . well, we simply played real good basketball!"

When asked about different points in the season, the Quaker mentor replied, "We played well before Christmas and from the Wilmington Tournament until semester exams we strung five real good victories. Then after exams we had our problems and we lost a few ball games."

How about injuries, Coach? "Well sure we had some injuries, but that's basketball." This is a typical answer from the fine young Guilford coach who never makes excuses about anything, particularly basketball!

As Coach Steele commented on the later part of the season, he quickly directed his conversation toward the NAIA playoffs. "High Point gave it a tremendous effort." That was the night the Quakers defeated the Panthers at High Point. The Steelemen showed pure desire on that night and through terrific team work they emerged victorious.

Coach Steele expressed his thoughts about winning the District 26 NAIA Championship before a waiting crowd in front of the college that victorious night. "We're just tickled to death." And "tickled" they were as the Quakers were now ready for the trip to Kansas City. They lost, but age-

wise the Steelemen were the youngest team in the Nationals. With three sophomores and a freshman starting, and an almost all-sophomore bench the Quakers just may return.

What about next year? "Wish it started tomorrow," replied Jerry Steele. And Quaker fans probably agree. Those who don't will have a change of heart as soon as they get wind of Guilford's new recruits.

### Quakers Face Tough Milligan Nine Today; Maynard Expects Fight for Playoff Spot

Earlier this year the football and basketball teams enjoyed their best seasons in Guilford's athletic history. Coach Stuart Maynard of the baseball team would like to extend the successful year of athletics into the baseball season. Though cautiously optimistic, he thinks he can do it. "We've never been in the Carolinas Conference playoffs and this year I'd like to see us make it," he says.

The Carolinas Conference playoffs is a four-team double elimination tournament with the winner emerging as Conference champion. The present playoff system has existed for four years and although Guilford has never been in it, the

Quaker nine has always come close. This year there will be several tough teams in the Conference race. Atlantic Christian should be among the strongest teams with almost everybody, including the ace of their pitching staff, back from last year. Western Carolina, High Point, perennially strong Pfeiffer and Newberry will all be in the race with Guilford for the four playoff spots.

The Quakers have a relatively good Carolinas Conference ball club this year with its greatest strengths and weaknesses found in pitching. The starting trio of Jim Bryan, Bill Burchette and Edgar Parker should be quite tough

throughout the season. If injuries and the grind towards the end of the season do not interfere with their performances, pitching may well prove to be the Quakers' forte. However, if something unfortunate does happen and Maynard is forced to look for a replacement for any of his three starters, the Quakers will be in trouble—deep trouble—and this problem could possibly provide the cause for Guilford's missing a playoff spot for another year.

Of his three starters, who are at this moment fairly equal in ability, Maynard feels that on the basis of last year's performance, Burchette should emerge as the bulwark of the staff. The blond-haired sophomore right-hander compiled a 5-2 record, the best on the team last year. He keeps the ball low and has fine control.

Jimmy Bryan is the all-purpose member of the Quaker pitching staff. When mound duties do not call, Bryan capably patrols left or right field. Maynard obviously feels that a hitter of Bryan's caliber (he bats in the clean-up spot) should not be kept out of the lineup. This year Bryan is an improved pitcher. He has good control and is moving the ball better than he did last year. In his first Conference performance he shut out Presbyterian 6-0 on March 16.

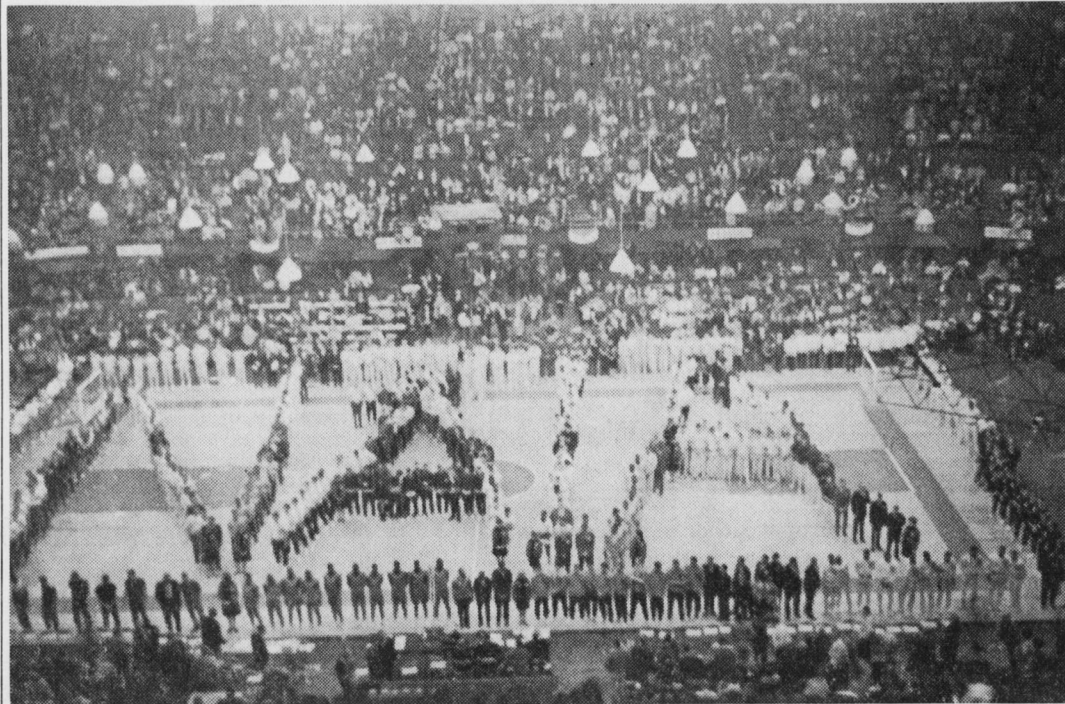
Edgar Parker, Guilford's only left-hand starter, is a highly promising freshman who, at times, does not pitch like a freshman. His fifteen strikeouts against Belmont Abbey are proof of that. He has good control and a good curve.

At the other field positions, Maynard has adequate coverage. The infield has a fine hitting foursome in third baseman Tommy Grayson, shortstop Harry Sasser, second baseman Sandy Gann and first baseman David James. Frank Hill can do the job when defense is needed at first base and Johnny Whittington will also see action in the infield.

Number one catcher is Marlyn Scott whose hitting has picked up from last year. Behind him is hard-hitting Bubba Brockwell, who has been the victim of recent arm trouble.

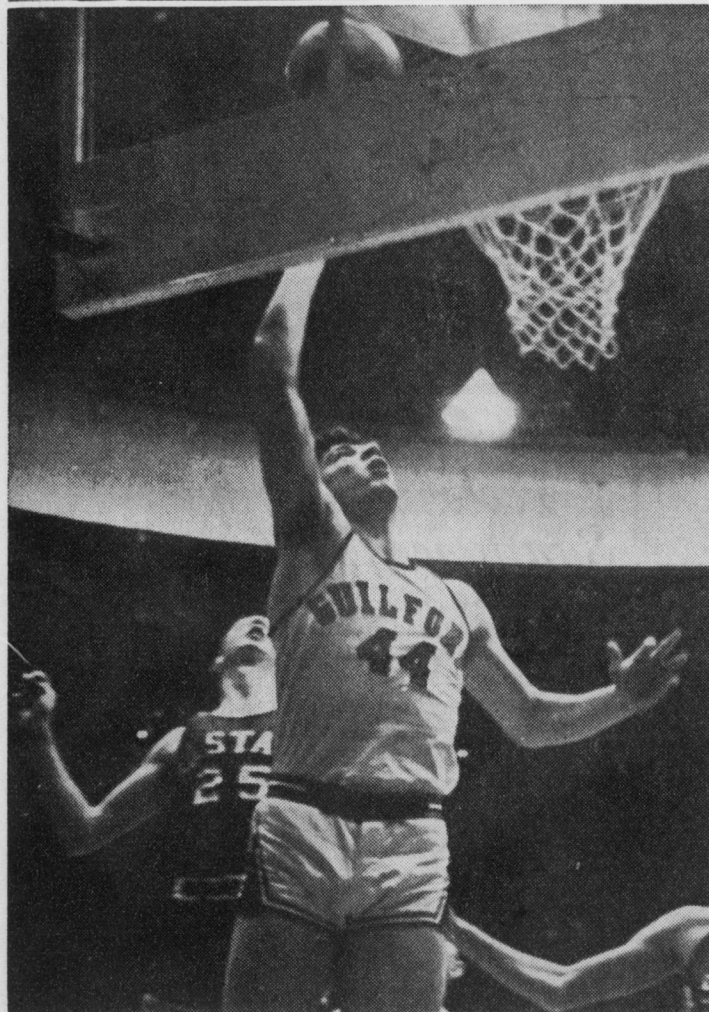
In the outfield are Joe Searcy in right field, speedy Warren Stewart in center field, and either Jim Bryan or Danny Southerland in left field. Versatile Danny Surface, who was an infielder last year, will also see action in the outfield as will Conway Harris, a Durham freshman.

The Quakers have an excellent chance for the playoffs but in the final account, pitching will be the determining influence. It can either make or break the Quakers in 1966.

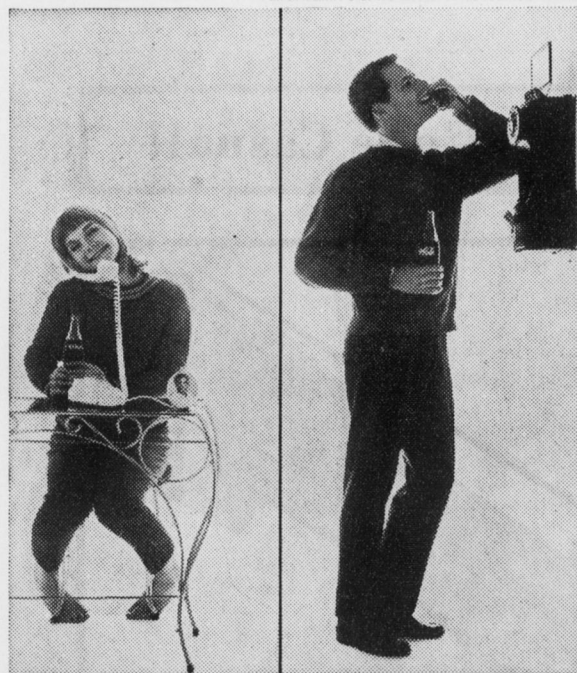


IN PRE-TOURNAMENT SPLENDOR, the competing teams form the letters "NAIA," which stand for National

Association of Intercollegiate Athletics. The Guilford players can be found at the cross-bar of the second "A." (Photo by Bowles)



BOB KAUFFMAN was a unanimous choice for All-Carolinas Conference. (Photo by Bowles).



Girl talk. Boy talk.  
All talk goes better refreshed.  
Coca-Cola — with a lively lift  
and never too sweet — refreshes best.

things go  
better  
with  
Coke



Bottled under the authority of The Coca-Cola Company by:

Greensboro Coca-Cola Bottling Co.

Drive-in

BR 3-5658

**HAM'S SUNDRY STORE**

Aycock, Madison and Friendly Road

Specializing in KOSHER Sandwiches

The nicest place on your way to town or school

#### Plans for Symposium

(Continued from page 1)  
icipation is unusually great. Following is a list of committees and their members:

**Executive Committee** — Jane Benbow, chairman; Hal Clark, Vance Baughm, Ken Wilson, Jerry Carter, Ann Snodgrass, William "Butch" Benbow.

**Finance Committee**—Dave Gibbons, Jay Ruff, and Dave Roberts.

**Arrangements** — Dave Roberts, chairman; Vance Baughm, Ray Perry, Tim Tufts.

**Publicity and Mass Media**—William Benbow, chairman; Dan Lenihan and Bob Norfleet.

**Literature, Information and Seminars** — Randy Ihara, chairman; Kaye Layton and Allen Toothaker.

**Hospitality** — Keith Park, Juan Wittington and Lisa Sanders.

**Faculty Advisors**—William Burris, Henry Semmler, Martha Cooley and Claude Shotts.

As things now stand, this symposium promises to be a landmark in Guilford's attempts to enrich its students, faculty and community. Only through programs like this can Guilford realize its ambition to help its students relate themselves rationally and meaningfully to their environment.