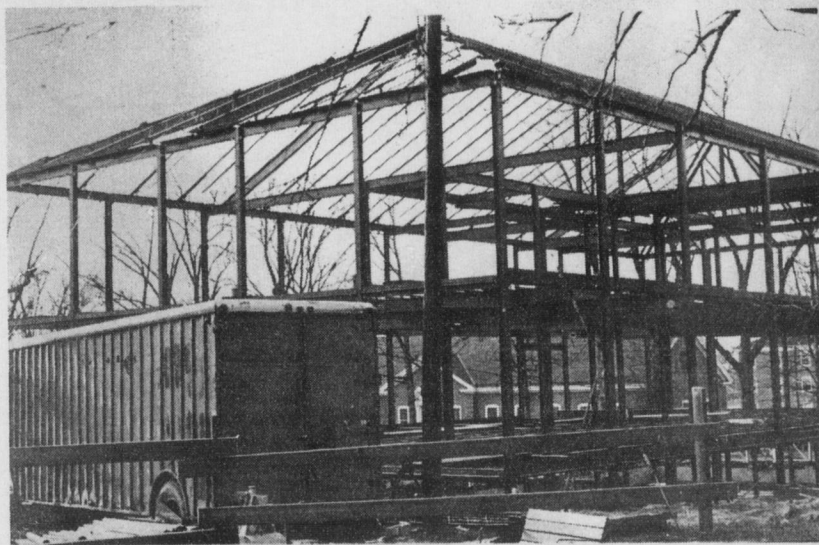


# The Guilfordian

VOL. LV

FRIDAY, SEPTEMBER 25, 1970

NO.



photos by Wil

## KING HALL RENOVATED

by Susan Hardee

Crash, bang, hammer, thud--King Hall is being renovated. And although Mary Hobbs girls like neither the noises nor the workmen peering in in the mornings, Doctor Purdom and various

other faculty members are very enthusiastic about the changes being made.

The section of King Hall built in 1910 was torn down and a new section is being built to take its place. The section built in 1949--the

front section--is being remodeled. The new section is three feet lower than the old so that the floors in the front and in the new section are even where they come together except in the basement.

The new basement section houses a large classroom with rising seats capable of seating 90-100 persons. This classroom can be used by any department in the building. At the back of it is a combination workroom-storage room where the various departments can set up experiments for lectures in the classrooms. Heating and air conditioning in the classroom can be separate from that of the rest of the building.

The physics labs are in the new basement section as are a darkroom and a repair shop for all the departments in the building.

The geology department is in the front part of the basement. The rooms have been rebuilt and new furniture added. In addition, there is a display case at the foot of the steps. The basement is entirely waterproof.

On the first floor there is new flooring in the front part and a display case. The biology department there will get some new furniture to replace part of the old.

In the new section there is a special room for the biology animal lab. The lab

floor is made so that it be hosed down.

The chemistry department which has been enlarged occupies the old psychology department in the front portion of the second floor. The chemistry labs will completely new furniture and equipment.

In the labs using chemicals there are exhaust pipes for the tables and sinks in which waste chemicals may be poured. Pyrex pipes carry acids to a sewage unit separate from that of the rest of the campus.

The psychology department is in the new part of the second floor. Unlike the other faculty offices on campus, six new offices for psychology professors are grouped around the secretary's office so that to get to any one professor's office it is necessary to go through the secretary's office.

The new psychology department has several observation rooms as well as senior labs. There are about a dozen compartments where individual work can be done.

Parts of the front portion are currently in use. The remodeling should be completed in about two weeks. Use of the new section in back will begin in the second semester.

The entire project will cost \$750,000.00. Hewitt Construction Company of Greensboro is doing the work with Jack Wakefield being in charge of building. The money is coming from a large range fund raising campaign headed by Al Wheeler, called the "Challenge of the '70 Program."

The entire building will be air conditioned. Offices and classrooms are to be carpeted.

King Hall was named in honor of a Quaker philanthropist Francis T. King who helped New Garden Boarding School during Reconstruction. It was partially under his influence that New Garden Boarding School became Guilford College.

## Rubin Cancelled

Jerry Rubin, scheduled to speak at Guilford October 3 as part of the Art Series, has been replaced with Senator Mark Hatfield (D. Oregon).

Yippie Rubin has been replaced due to overwhelming public response, Cliff Lowery, Student Activities Director, announced to the GUILFORDIAN.

Ticket sales to the public, necessary to balance the Series budget, were poor due to the inclusion of Jerry Rubin on the schedule, forcing the Executive Committee of the Student Union to cancel Rubin's contract and hire a more publicly acceptable speaker.

The Art Series budget consists of \$18,000; \$12,000 from the college and \$6,000 from public ticket sales. Two weeks after the Series speakers were announced, less than \$2,000 had been collected. In years past, the entire public subscription would have been complete in this time but letters and phone calls to faculty and administrators agreed with one pen man who said "I wouldn't buy a ticket to this Art Series if it were the last Art Series in the world."

According to Lowery the Executive Committee decided to replace Rubin unanimously after deciding that Yippie Rubin was more of a hindrance than an asset to the public's view of the

series, as well as the dismal ticket sales.

The addition of Hatfield and the removal of Rubin was announced in the GREENSBORO DAILY NEWS on Saturday and on local radio stations on Sunday and Monday. On Tuesday fifty ticket orders were received. During the two weeks following the public announcement the ticket sales picked up and over \$3,000 worth of subscriptions were sold.

## Union Board Retreat

The Board of Directors of the Guilford College Union met at the Albert Pick Motel last Saturday to discuss the philosophy and functions of the 1970-71 Union.

The Dance and Pop Arts Committee, of which David Shepperd is the chairman, has scheduled Kenny Rogers and the First Edition for Homecoming Weekend. Ian and Sylvia will appear at Guilford later in the semester.

The Films Committee has scheduled several Hollywood films, including Seven Days in May, The Sandpebbles, Cool Hand Luke, and Wait Until Dark. The Hollywood films will be shown on Friday nights.

Joel Deaton is the chairman of the Recreation Committee. His committee is interested in trying to schedule events involving small groups of people who have special interests or hobbies.

The Student Involvement Committee, of which Tori Potts is the chairman is a new committee of the Union. It is not a committee with a

## Be Graphic Submit!!

The GUILFORDIAN is soliciting contributions of an artistic nature from students wishing to have materials printed.

Graphics, cartoons, poetry, artistic photographs and written pieces not exceeding 300 words will be considered. Photos should be glossy black and white prints. Drawings should be done in black ink or other media on heavy white paper.

All work must be signed and original.

permanent set of members. Its purpose is to act as a liaison between interest groups on campus who are concerned with a particular problem on the campus, and the College Union Board. It will attempt to provide the necessary funds, supplies, and logistical support to carry out the proposals or solve the problems with which the groups are concerned.

The Advancement Committee, Tom Clayton chairman, tries to respond to specific needs of the campus in an effort to create a real sense of community between faculty, staff, alumni and students. They will be sponsoring dinners with various groups during the year to try to create meaningful communication.

The members of the Union Board met with interested Freshmen Tuesday night to explain the goals, projects and needs of the Union. Anyone who is interested in working with Union on any one of its numerous projects or committees should contact Steve Kraft or Cliff Lowery.

Anyone who expects to student teach in the Spring 1971 and has NOT filled out an application for Student Teaching should do so IMMEDIATELY with the Department of Education, Center Section of Cox Hall, Room 322.