

Defense, Kenan Shine 42-13

by Steve Beck

(EMORY, Va.) It was Parents Night last Saturday night when Emory and Henry hosted Guilford. After the Quakers stormed to a 32-14 win, most of the E&H parents must have been thinking, "No, that's not for me or my children."

It was a game in which almost everything went right for the Quakers, almost that is. The Wasps returned two kickoffs for scores and those two runs just might be the only two plays in the Emory highlight film for next year. The losers are 0-3 on the year.

As well as the Quakers played however, their first lead came with only 0:52 left in the third quarter. After that it was a different story. But that was no fault of the Guilford defensive eleven.

Statistics often can be misleading, but not in this case. Check this out, two E&H first downs (zip in the second half) and only 51 yards total offense after being held to minus yard during the first two periods. And that's only half the story.

The other half was the running of tailback Reggie Kenan. While he may be listed as number 22 in the program, his jersey read Hello and Goodbye to the Wasp defenders. The Wallace, N.C. junior racked up 175 yards, 124 of those coming in the first half.

True, Kenan ran great, but he didn't do it alone. Fullback Billy Whitley's blocks were as

beautiful as Reggie's runs. So was the reading of the defense by quarterback's Joe Osborne and Butch Foley which shook Kenan loose on the option play. Equally impressive was the play of the offensive line.

Most games are won in the line and this game was no exception. Led by All-American candidate Steve Muslin, other members of the offensive line are Mike O'Reilly, Lynn Reavis, Sammy Wishon, John Eder and Benny Holcomb. Much of the credit for Guilford's 455 offensive yards goes to these gentlemen.

The game left the Emory coaching staff shaking the heads. Three plays and a punt was the story of the game for the Wasps. That was due to the defensive heroics of Al Patterson, Cliff Hunsucker, Charlie Swann and Bunky James only to mention a few.

Most of the fans had just settled down into their seats when Ron Mabry took in big Mike McClune's kickoff on the seven yard line and raced up the middle of the field untouched for the score. The play took twelve seconds.

Following the kickoff, Guilford moved from the 40 to the Wasp 14 but failed on a fourth and 5 from there. Concord punted and Guilford was set to go this time. A six yard pass from Osborne to Chris Paphities capped a 74 yard drive. Foley kicked the point after and with 6:20 left the score was 7-7 and Kenan was already approaching the 100

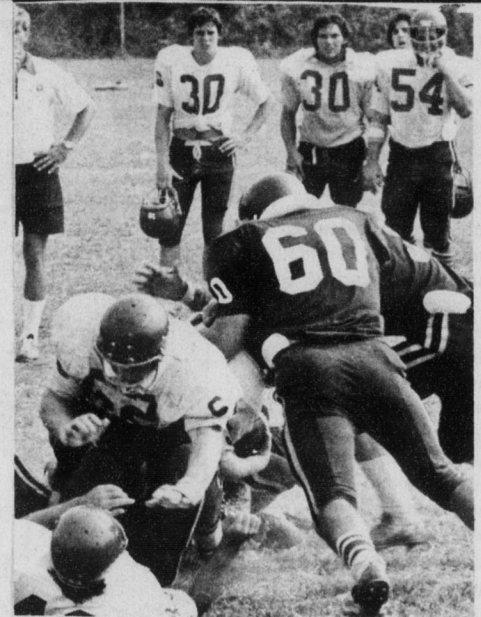
yard mark.

The Quakers moved close near the end of the half but stalled at the E&H 11-yard line. Foley came in to attempt a 26-yard field goal but the kick was wide left.

There was some confusion to start the second half. Instead of receiving the kickoff, Guilford had to kickoff meaning that they kicked to start both halves. Added to that was a 15 yard penalty from the last play of the first half. Confusing? McClune's kick went out of bounds, so another five yards were walked off back to the 20. Finally Emory's Kermit Crockett took the ball on the 22 and this time he ran untouched for the score. With 14:49 left in the third Guilford was down 14-7.

With 7:03 left in the same period Foley replaced Osborne at the QB slot and the Quakers acquired a spark that set them on fire. Taking over at the 21, Foley lead the Quakers on a perfectly engineered touch-down drive. When Butch stepped over from the two there was 0:52 left in the quarter. Reggie Kenan scored a two-point conversion and Guilford had it's first lead at 15-14. Foley passed for 59 yards in the 79 yard drive.

The Wasps punted and Foley had the Quakes moving again. This time Guilford moved 80 yards in only 7 days as Whitley scored this time from the two. Again Foley's passing arm was red-hot as he hit for 58 yards in drive. It was



Quakers prepare to do battle with Elon on Saturday
Photo by Catoe

then 22-14 Guilford.

Again Emory punted and again Guilford scored. This time the drive fell short at the 30 so Foley tied up his shoe and kicked a 47 yard field, which ties the second longest kick in Guilford history.

Needless to say Foley played one hell of a game. He scored five points, passed for 131 yards on five of six passes, and picked up the Quaker offense when it seemed to lose it's punch.

After the field goal both teams replaced their starters. Keith Taylor came off the bench to score from the one with 2:00 left but by that time the issue was already settled.

Next Saturday afternoon Guilford travels to Burlington for their traditional grudge match with Elon College. Don't miss it!

Intramurals

by Sarah Ladd

Football

Sept. 23, Tuesday - 4:30
Shore v. Binford W, 6:00 Day
Hops v. Milner 3rd.

Sept. 24, Wednesday - 4:00
Shore v. Bryan, 5:00 Bryan v.
English.

Mens Playoffs TBA

Tennis

Tennis doubles schedules will be announced next week. Mixed doubles will be open to everyone on campus including faculty and varsity team members. There is still time to sign up. If you are interested please see Steve McDermott or Mrs. Clark. Schedules for singles and doubles intramurals are posted on the bulletin in the gym. Mrs. Clark has asked that all players please observe deadlines.

Women's Tennis Roster

Women's varsity tennis gets underway Wednesday, Sept. 4 at Peace College. The first home game will be played Thursday: Guilford versus Meredith. The games will run through Wednesday, November 5.

Kitty Steele, Coach
Alina Lebrato, Manager
Steve McDermott, Asst.

Cyd Atkins	Soph.
Lynn Davies	Soph.
Kelly Erickson	Soph.
Janet Falls	Fresh
Jennis Hayworth	Fresh
Mary Kittredge	Fresh
Carol Lipinsky	Fresh
Jennifer Powell	Soph.
Ellen Quinn	Fresh
Susie Webster	Senior

Slippery Season's Start for Soccer Team

by Aubrey Doggett

This year's soccer team has a new coach; Ray Alley. He brings with him impressive credentials from his successes at High Point College. In his office today he had the following comments to share:

"Guilford College has made a firm commitment to soccer by hiring a full time coach." The school now has the services of a coach whose 3 year tenure at H.P.C. turned the program around from 1-11 his first year to 11-1-2 last year and the conference title.

His season last year was highlighted by a win over previously invincible Belmont Abbey. Coach Alley was

named Coach of the Year in both conference and district 26 in tennis and soccer. He was named national coach of the year in tennis (NAIA).

Regarding projections, Alley responded: "I hope to be competitive for the conference championship this and within the next three seasons. I hope to be competitive on a national level which is accomplished by means of winning the district and area championships, thereby earning a top ten Southern ranking." One can look in his eyes and realize that he is dead serious on these realistic goals.

The subject of the transition from H.P.C. to G.C., Alley continued, "Guilford has been

a big adjustment. I have tried to instill a positive approach to this season and the future. People need to believe in each other and believe they can be successful." Following a season opener (loss to G.C. 5-4), moral has been low and emphasis in this area has been a prime consideration in preparation for Belmont Abbey this week.

Speaking of personnel, "We've got some talented players on the team this year and have some others who don't have good skills, but have worked hard. If we can combine this with a good attitude we can have a successful season this year. My biggest disappointment

has been a lack of leadership from within the team, and a lack of positive emotion with the effort we get."

There are only three seniors on this year's team, and three juniors. The majority of the team is comprised of freshmen who lack the experience to fill the void. These are problems that soon will be ironed out as the season matures.

For this year, Alley's concerns are "to be competitive for the conference championships through consistent performances against Elon, Catawba, Pfeiffer, Atlantic Christian and High Point. Those are the first steps and if we can be competitive against these teams the effort will carry over into the other matches."

Guilford has two home matches this week.

Women's Volleyball

Also this week, on Tuesday the 23rd, women's volleyball will begin with a home game against UNC-Catawba. Games

will continue until Nov. 4. The state "B" tournament will be held at UNC-Catawba Nov. 7-8.