

Guilfordian

February 22, 1977

VOTE in the Senate Elections

Ticket not available for picture.

Ticket No. 1

Michele Siverson, president; Elizabeth Gagne, vice president/treasurer; Charlie Heath, secretary.



Ticket No. 3:

Rob Bailey, secretary; Elliott Good, president; Eric Jackson, vice-president/treasurer.

Williams, Lee, McLemore Present Their Ideas

Amie Williams —
President
Chong Lee — Vice
Pres./Treasurer
Nicky McLemore —
Secretary

The basic structure of student representation at Guilford is solid. Few other schools provide so many opportunities for students, faculty and administrators to work out problems together. The existing form of student

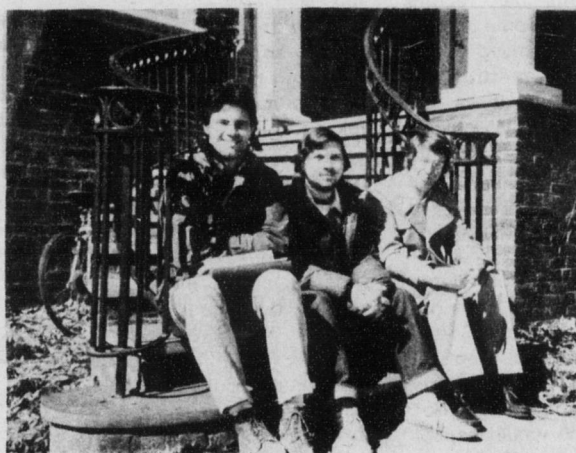
Continued on 5

Students, Check Your Mailboxes

This is reminder to *all* students, but especially to day students, that correspondence from all offices on the campus is *always* sent to the Student Mailboxes in the basement of Founders Hall. Please be sure to check your 17000 mailboxes daily, or at least three times a week. Academic probation letters, W-2 Forms, notes from your adviser, etc. are all very important communications which you need to receive and read.

Ticket No. 2

Amie Williams, president; Chong Lee, vice-president/treasurer; Nicky McLemore, secretary.



Ticket No. 4:

Richard Phillips, president; John Richardson, vice-president/treasurer; Bob Wells, secretary.

AN ALTERNATIVE Platform

An Alternative is people

An Alternative is Richard Phillips for President, John Richardson for Vice President/Treasurer, and Bob Wells for Secretary. We are just ordinary people who have a strong interest in serving the Guilford College community. We aren't super-human nor do we have

any ill conceived notions of being extraordinary. We are, however, quietly competent. Each of us have skills that relate to the offices that we seek and we are confident that we can translate these skills into action.

Continued on 3