

Quakers fed to Lions in finale

By Bruce Teachey

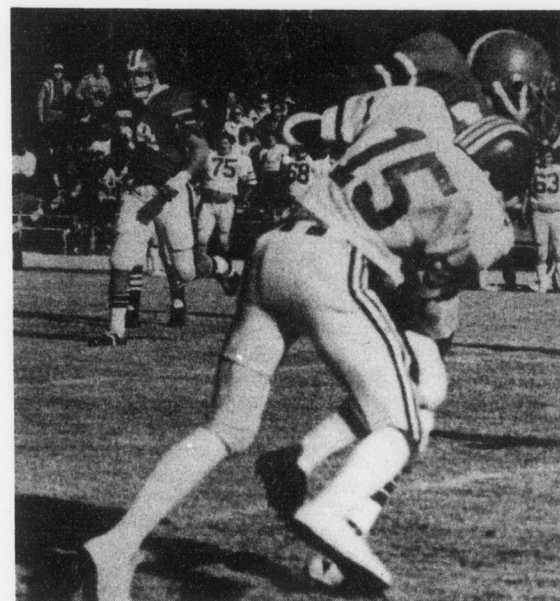
The season finale for Guilford ended in defeat as the Mountain Lions of Concord proved to be too quick and too strong in handing the Quakers a 46-3 loss. The West Virginia team, who is now 9-1, and ranked third in the NAIA, used a strong running game in piling up a total of 277 yards. However, big plays once again proved to be devastating to Guilford.

After Concord scored on its second drive with tailback Alfred Smith scoring on a 43-yard scamper, the Quakers moved down to the Concord 11-yard line. From there, Brian Wilson kicked a 30-yard field goal to make the margin 7-3. Guilford never got closer than this four point spread. The rest of the scoring proved to be nothing more than a Mountain Lion replay film. Smith scored once again on a 37-yard run on the first play of the second quarter. Two field goals by Eddie Rankin and a two yard run by Robert McDonald made the score 23-3

at the half. The second half witnessed more as a field goal, two touchdown runs from five yards and 12 yards respectively, and an interception return of 35 yards made the final score 46-3.

For the second week in a row, the Guilford secondary shut down the passing game giving up only 4 of 18 passes for 61 yards. However, the Quaker offense committed three turnovers in which Concord capitalized. This could be attributed to the fact that quarterback Keith Millner was out and that three quarterbacks were shuffled. Guilford also lost Eric Holsenback in the first quarter which hurt the Quaker defense.

Guilford finished the season at 5-5 but should not hang their heads low. The team experienced a rough schedule playing four road games in a row while also playing four teams that were nationally ranked at some point in the season. Coach Charles Forbes should be happy with the team's play this year.



Another Quaker falls prey to the Mountain Lions of Concord in Guilford's final game.

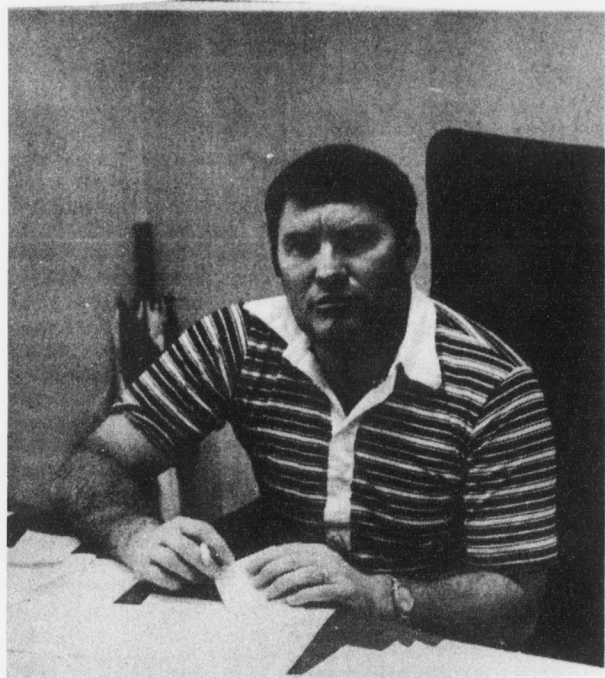


photo by Mike Brandeis

"These kids just don't know when to quit," said Coach Jack Jensen of this season's basketball team.

Little experience, but lots of staying power

By Scott Bradford

The upcoming version of the Guilford College men's basketball team proves to be much different from last year's edition. Gone from the squad are four starters: Wayne Freeman, Postell Seymour, Sporty Gerald and Greg Sims. All that remains are four players from last year's team, which went 12-16, and was Coach Jack Jensen's first losing team in 11 years of head coaching at Guilford. He is now faced with the task of developing 8 new players, including six freshmen, one transfer, and a senior who has never played at Guilford.

Returning are junior starter Ben Barrett at guard, sophomore reserves James Haygood and Tommy Irvin and junior reserve Eley Boone. The freshmen are

Jerry Greenwood, Chris Lambert, Mike Apple, Bill Gross, Keith King and Dan Ogburn. The lone senior is Kenny Geotze while Blaise Cancro is a junior transfer who is out indefinitely with a broken wrist.

Says Jensen, "In my 16 years as both an assistant and head coach, I've never had a situation like this before. We are extremely inexperienced and I've never let freshmen contribute this much before." Four of the top players figure to be freshmen.

Because there are so many new players, team attitude is much improved from last year when the Quakers were often lethargic and plagued by a case of "senioritis." The infusion of new talent has led to a positive attitude and good practices, something Coach Jensen is glad to see after last season. "Even

though I have no idea what this team's going to do, I've seen a difference in attitudes (from last year)", remarks Jensen, "These kids don't know when to quit."

The team is characterized as quick, but relatively small. As with previous Guilford teams, the Quakers will attempt to fast-break and move the ball up the court quickly to capitalize on their speed. On defense the Quaker will play pressure man-to-man and zone when in foul trouble.

Unfortunately, the freshmen, as well as the team as a whole, must mature quickly. They open the season at home, Saturday Nov. 21, against Catawba. Defending Carolinas Conference champion, Catawba is even stronger and is picked to top the conference again and win District 26, which Guilford also competes in.

Lady Quakers show promise

The Lady Quakers lost to the UNC-G Spartans 68-74 in their first scrimmage game of the season. The Quakers were outplayed throughout the game except for a five minute stretch at the beginning of the second period. Guilford, however, did make many good runs at the Spartans, leading them 39-38 at one point. It was also the first game for the new Guilford coach Judie Flynn, who arrived from Alan Jay. Coach Flynn had several comments about Tuesday's match. "Although we were outplayed most of the game, the team shows many possibilities for this season. I feel

we'll be very competitive in the conference. We'll have to see the other teams play before we know for sure."

Tuesday's game showed some outstanding play from some new Guilford recruits. Both freshmen Lois Wright and Melanie Bledsoe led the scoring as well as showing some impressive effort. Wright led the scoring with 23 points, while Bledsoe obtained another 15 points. The rest of the team scoring was as follows: Karen Joyner-2, Tammy Strickland-4, Hope Dixon-5, Cathy Edwards-6, Sharon Parks-8, and Amy Parrish-5 points. Good luck Quakers on the upcoming season!

1981-1982 GUILFORD COLLEGE MEN'S VARSITY BASKETBALL SCHEDULE

Nov. 21	Catawba	Home	8:00
Nov. 24	UNC-Greensboro	Home	8:00
Dec. 2	Greensboro Coliseum Tourn., Coliseum		
Dec. 3	Greensboro Coliseum Tourn., Coliseum		
Dec. 4	Greensboro Coliseum Tourn., Coliseum		
Dec. 5	Greensboro Coliseum Tourn., Coliseum		
Dec. 9	Wingate	Home	8:00
Dec. 12	High Point	Away	
Dec. 18	Quaker Classic Tourn...	Home	7:00
Dec. 19	Quaker Classic Tourn...	Home	7:00
Jan. 5	Amherst	Home	8:00
Jan. 7	Mars Hill	Away	
Jan. 9	Elon College	Away	
Jan. 12	Gardner-Webb	Away	
Jan. 16	Pembroke State	Home	8:00
Jan. 18	Pfeiffer	Away	
Jan. 20	Greensboro College	Home	8:00
Jan. 23	Atlantic Christian	Home	8:00
Jan. 27	Catawba	Away	
Jan. 30	Pembroke State	Away	
Feb. 2	Pfeiffer	Home	8:00
Feb. 4	Lenoir Rhyne	Away	
Feb. 8	Mars Hill	Home	8:00
Feb. 10	Atlantic Christian	Away	
Feb. 13	High Point	Home	8:00
Feb. 17	Wingate	Away	
Feb. 20	Elon	Home	8:00
Feb. 23-26	Carolinas Conf. Tourn., Salisbury, NC		

Head Coach: Jack Jensen

1981 GUILFORD COLLEGE WOMEN'S VARSITY BASKETBALL SCHEDULE

Dec. 3	Bennett	Home	7:00
Dec. 7	Elon	Away	7:00
Dec. 9	Wingate	Home	5:30
Jan. 15	Pfeiffer	Home	7:00
Jan. 18	High Point	Away	7:00
Jan. 20	Elon	Home	5:30
Jan. 22	Wingate	Away	7:00
Jan. 25	W-S State Univ.	Home	7:00
Jan. 27	Catawba	Away	5:30
Jan. 30	Pembroke	Away	6:00
Feb. 2	UNC-G	Away	7:00
Feb. 4	High Point	Home	7:00
Feb. 6	Belmont Abbey	Home	5:30
Feb. 9	Pfeiffer	Away	7:00
Feb. 11	Atlantic Christian	Home	7:00
Feb. 15	W-S State Univ.	Away	7:00
Feb. 18-20	Carolinas Conf. Tourn. High Point		
Feb. 23-24	NAIA District #26 Tourn., Elon		
Mar. 11-13	NAIA National Tourn., Kansas City		

Head Coach: Gayle Currie