

Guilfordian

Volume LXVIII, No. 13

Guilford College, Greensboro, NC 27410

February 8, 1984

Biophile Rejuvenates

By Susan Chase

The Biophile Club of Guilford College has received official recognition after a semester of organization. The club consists of a group of individuals interested in appreciating and learning about the natural environment.

Originally established in 1962, the club enjoyed success. Accomplishments included publishing a Biophile Bulletin each year. In the past couple of years interest waned and the club faded into obscurity.

This past fall Glen Page and Stuart Pease started it up again. Beginning with mailbox notices in September, they found others eager to participate in group activities centered upon studying and helping preserve the natural environment. The turnout at the first meeting was so large that Page said, "We didn't even have enough popcorn." The group grew from there.

Biophile meetings continued to be held for films and discussions, and the group started a recycling program on the Guilford campus. Page, Pease, and other participants wanted to submit a constitution to the Senate for ratification, but they had difficul-

ty finding a faculty advisor. Eventually Carol Clark agreed to take on the job. She has been a very positive influence, according to Page.

The club has some major goals for the future. Included are increasing people's awareness of the surrounding environment, and concentrating efforts on improving the campus lake and woods. Biophile members are concerned with the lake's erosion and litter, and they hope to do a project on trails so more people can enjoy the woods. Plans are also being made to contribute a booth at Serendipity and organize an "Earth Week." In addition, Stuart Pease is looking into attending an Environmental Conference at Tufts University in late March.

The Biophile Club meets Wednesday evenings at 9:00 in the Passion Pit. Glenn Page welcomes all and he stresses the "open, friendly, warm atmosphere" of the group's get-togethers.

"Everybody can participate and we're working for the whole campus. If you're not helping solve the problem, you're part of the problem," he said.

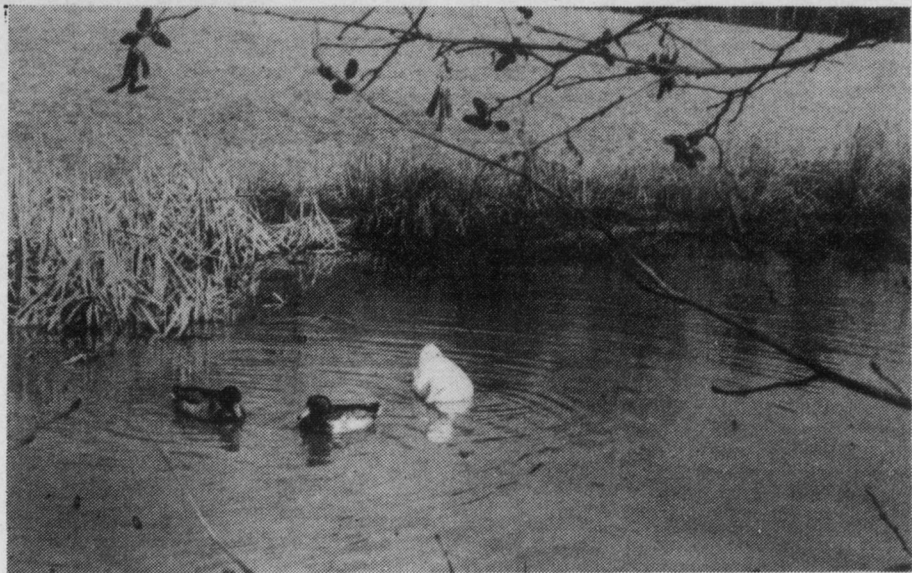


Photo by Tom Risser

Improvement of Guilford College lake area is one of the primary concerns of Biophile Club.

Auction Aids Loan Fund

By Susan Chase

The Second Annual Community Senate Service Auction will be held Friday, March 23, at 8:15 p.m. in Sternberger Auditorium. Admission will be \$1 per person. The Senate Auction Committee co-chairmen, Nathan Bohn and Jim Freeman, report that this year's goal is \$10,000.

The auction will consist of three parts. There will be a live auction, in which vocal bidding will be directed by Langley and Duncan Auctioneers, another contributor. A silent auction will entail writing down bids on other donations, and the third part will consist of the sale of items at fixed prices.

Last year Roger Pettigell and the Community Senate began a Student Loan Fund to help offset reduction of governmental aid. They started with \$12,500 of Student Activities Fees and challenged alumni to match this amount. They also held a service auction to raise money; it was successful in raising over \$4000. The Student Loan Fund has continued to grow since then, and is currently helping twenty-three students. The Fund is now \$80,000 short of its \$250,000 goal.

Freeman added, "We feel it's important for students themselves to pick up the slack in financial aid so other students don't have to go elsewhere because they can't afford Guilford."

To acquire more money for the Student Loan Fund, the Auction Committee asks local merchants and Guilford alumni, faculty, staff, and students for donations to be auctioned. All donations are tax-deductible and the range of donations is vast.

Merchants have contributed gift certificates, memberships, and products, which include ten-

nis balls, and oriental rugs, and a typewriter. Faculty members have donated dinners for students, and students have added services such as babysitting and housecleaning. The Greensboro Kiwanis Club is helping with publicity and is also soliciting donations.

Bohn said, "I am looking forward to a successful auction. If we continue to get support and aid from the Guilford community and other groups, we can meet our goal and help relieve some of the financial pressures of present

and future Guilfordians."

The Senate is still looking for donations of any type—services, merchandise, cash, etc.—for the cause of the Student Loan Fund. Anyone wishing to make a donation should contact the Community Senate, Nathan Bohn, Jim Freeman, or the Community Senate office at 292-5511, ext. 303.

"I hate to see people with a lot of potential missing out on college. Lack of funding is an unfortunate reason to be excluded," commented Bohn.

SENATE NOTES

By Jennifer Park

Dennis Blue announced that there would be a 7% increase in tuition next year and brought up President Rogers' suggestion for an increase in the student activities fee.

Five percent of the increase will go for faculty salary raises and 1% is for institutional financial aid. The president's recommended increase in student activity fees was five dollars, from \$117 to \$122. Derek Maingot questioned whether it was really necessary, as he recalled many organizations returned money to the Senate this year. Jayne Mardock elaborated on Blue's assertions that the money returned was not significant when compared with increased requests for money. The Senate approved the recommended increase. Total costs for next year will be \$7640.

The proposed constitutions for the Biophile and Men's Rugby Clubs were reviewed. The Biophile's constitution was approved on the condition that a good copy that included the minor changes suggested was turned in by next week. After

some discussion of the legal and social implications of the Rugby Club's insistent use of the words male and men it was decided the club should be called the Men's Rugby Club.

Senators were asked to contribute time to the Loyalty Fund Phone-a-thon to be held Monday through Thursday, February 6 to 23.

Joyce Clark thanked the Senate for the money it gave the intramural flag-football team to go to New Orleans. Photographs of the trip were passed around and the winning banner was displayed.

The question of how Serendipity can involve everyone on campus was brought up. Dennis Blue mentioned a possible plan to have a caterer with a liquor license on campus to make alcohol available and release the college of responsibility.

Finally, Jim Newlin reported on the architect's design for an addition to the cafeteria. He asked the food committee to take a look at the plan. If action is taken immediately, he said, it is possible that it may be built this spring.



Photo by Tom Risser

No news like old news. Biophile recycles newspapers and aluminum cans.