

The GUILFORDIAN

VOL. 74 No. 8 GUILFORD COLLEGE, GREENSBORO, N.C. OCT. 16, 1989

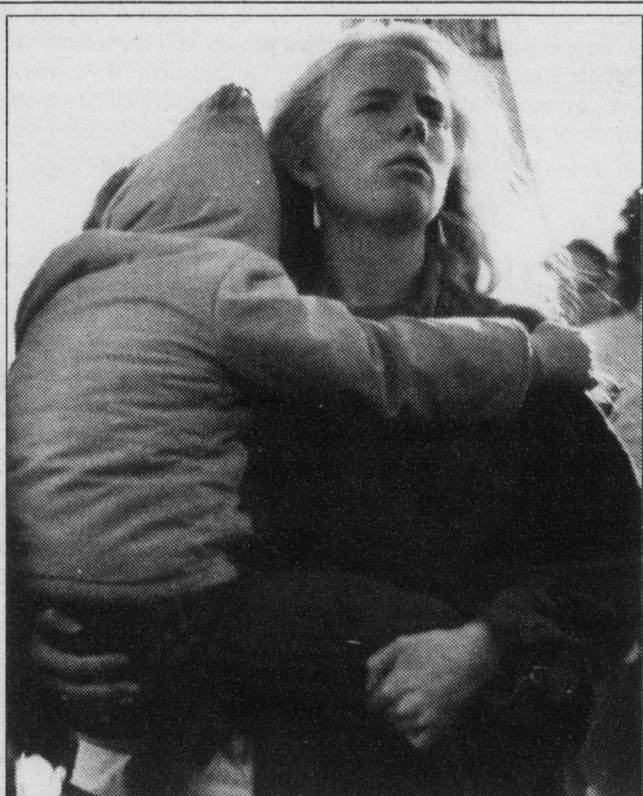


photo by Laurel Nesbitt

Elizabeth Mills carries a fatigued young marcher at the Housing Now! march in Washington. Story on page 4.

S.A.P.B. rallies support

Jacob Stohler
Layout Editor

Despite 50° weather and a brisk wind, over 70 people showed up in front of Hege-Cox Hall last Sunday night for a rally to protest the proposed building of Painter Boulevard through

Guilford's woods.

On hand for the rally were Tom Lalley, president of Students Against Painter Boulevard, and attorney Douglas Harris, district 3 candidate to City Council, in addition to the crowd of students and community members.

The rally began around 7:45

see S.A.P.B. page 5 >

Senate braces for budget cuts, redirects SAC

Peter Smith
News Editor

Community Senate Treasurer Burt Gordon asked all student organizations treasurers on Sunday, October 15 to cut their respective budgets by 12 percent in order to help the Senate handle a \$20,000 budget deficit.

The deficit is a direct result of low enrollment during the fall and poor money management by Andrew Stuart, the 1987-88 Quaker yearbook editor.

Senate was originally budgeted to receive activities fees from 1160 students but must now make cuts because only 1054 students have enrolled. The current activities fee is \$150 per student.

Senate officials estimate that Andrew Stuart spent \$20,000 to \$25,000 over his allotted Quaker budget in the spring of 1988, causing Senate to adjust its

spending for last year's yearbook, and subsequently this year's Senate budget.

"It's tough to tell treasurers that they must cut back 12 percent in their budget when I originally planned for a \$40,000 cushion," said Gordon. "I'm afraid students will stop coming to Senate for new initiatives when we keep telling them no, no, no for additional funds. Andrew Stuart's overspending will have a three-year effect on Senate."

Gordon hopes that enrollment will increase this spring, boosting the Student Activities Fees Account and easing budget constraints on Senate. Typically, enrollment does increase during the spring semester as study-abroad students return and more transfer students enroll at Guilford.

SAC redirected

In an attempt to clarify the Student Affairs Committee's (SAC) role in student government,

see SENATE page 5 >

OOOPS!

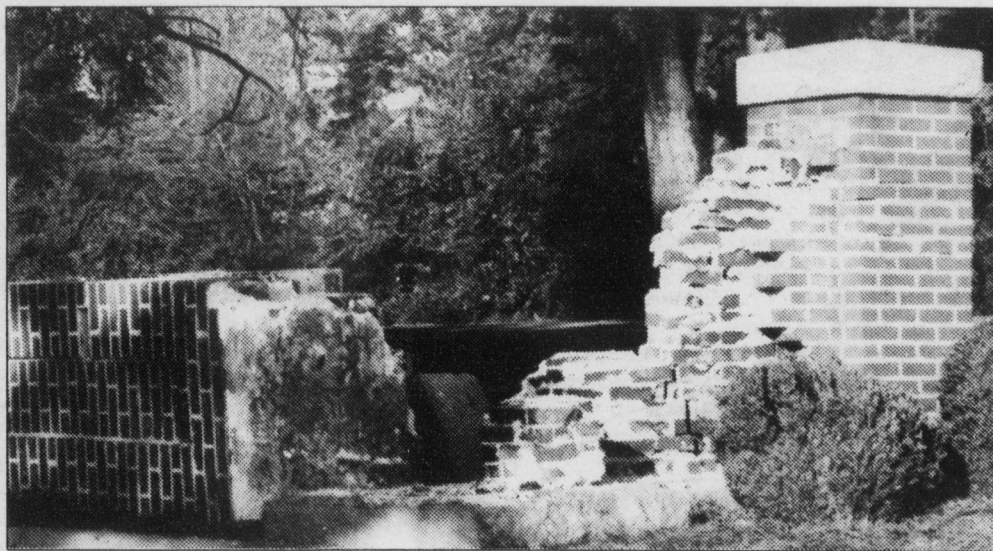


photo by Charles Almy

Half of the college's brick entranceway was demolished Monday night by a drunk driver who rammed head-on into the structure causing \$7,000 worth of damage.

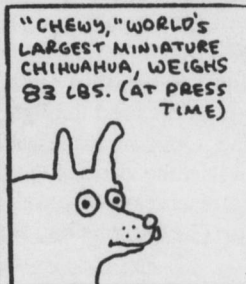
INSIDE

Mars Hill apologizes for plagiarism

PAGE 4

A bird's-eye view of the campus

PAGE 7



LIFE IN HELL

PAGE 8