

The GUILFORDIAN

Vol. 74 No. 16

Guilford College, Greensboro, N.C.

Feb. 5, 1990

Officials consider proposal for co-ed Milner

Brennan Keene
Staff Writer

Following the allocation of \$1.8 million from bonds for residence hall renovations by the Board of Trustees, Richard Ford, director of residential life, has proposed that Milner Hall be completely renovated and changed from an all-male to a

co-ed hall.

Because of the type of shower facilities in Milner, extensive changes must be made on the second floor, the designated floor for women. According to Maureen Keefe, assistant director of residential life, these renovations, as well as those of all residence hall rooms must begin "no later than mid-February."

"It's definitely going to bring down the damage and provide a

more effective learning environment for men and women," commented Keefe. She went on to say that making Milner co-ed will increase awareness and tolerance between men and women.

Richard Ford's reasoning for making Milner co-ed involves several statistics. Of 622 housing contracts reviewed, 50.6 percent of Guilford students indicated that they would prefer co-ed housing; however, with

Guilford's present housing situation, only 30 percent of on-campus students can be housed in co-ed housing. Furthermore, with Bryan Hall, being composed of 20 suites of women and only eight suites of men, Milner's becoming co-ed would make Bryan come closer to a 50-50 male/female ratio.

In a memo written on Jan. 26 to Nancy Cable-Wells and to Stuart Vaughn and Chrissy

Lawrence, SRC co-chairs, Ford said, "For all of these reasons, Milner will be co-ed for next year, with the second floor designated as female space. There may be some students who will feel as if more opportunities are being denied, however, given the request for co-ed housing, it seems clear that the needs of the greater community will be served."

Despite the strong favor shown by the Residential Life Office, some people are skeptical of the decision. Stephen Goins, resident advisor in Milner Hall feels strongly about continuing Milner's present situation. "I feel a bond between the guys here, a sense of 'hanging out with the guys.'" Goins went on to voice his concerns about the "lack of consultation" with the students. Ford hopes to address the matter on Sunday, Feb. 4 in Milner Lounge.

A co-ed Milner will require a lot of adjustment for women and men. Shannon Craigo, a resident of Mary Hobbs Hall, summed up the feelings of most of the women asked.

"I think that women would be willing to live in a co-ed, renovated Milner; however, it will be difficult for women and men to release Milner's past and go on to a new and very different future."

Library hours extended for six-week trial

Joyce Atkinson
Production Coordinator

The existing library hours, decreased due to budget cuts, will be extended to the old hours for a six-week trial period from February 10 to March 25.

Currently, the library is open from 8 to 12 a.m. Monday through Thursday. On Friday, the doors open at 8 a.m. and now close at 6 p.m., rather than the traditional 10 p.m. Saturday hours, currently from 12 to 6 p.m., will extend from 10 a.m. to 8 p.m. Sunday hours will run from 10 to 12 a.m.

The eight hour reduction, if the trial period

proves ineffective, will save a proposed \$18,040 for this semester alone. Circulation Librarian Karen Behm said, "The hour library cut was the first most obvious place of the budget cut." Behm said, "We felt the library was not being used enough during those hours. Friday night was a graveyard and it was difficult to find student workers during that time."

The library was requested to cut \$20,000 out of their budget this year as part of Guilford's campus-wide budget cut. Director of the Library Herbert Poole and his staff devised a budget cut that would effect five areas of the library.

The staff elected to cut back on supplies, travel expenses, the departmental book

budget, and two areas of student labor, one being in the Quaker historical section and the other at the circulation desk.

Many students feel that the library should be available on Friday and Saturday nights because it is difficult to work then in the residence halls. Some students expressed their concern to student workers. Gregg Kearney, a circulation desk worker, said of the general student attitude, "Students were irate which is funny to me because when it was open until 10 p.m. [Fridays] no one was in here. I think we're doing the right thing."

Poole said, "Clearly the administration recognizes students concern. If students want more hours, then we'll do it because we're here primarily for students."

Behm feels it will be necessary to count the number of people in the library during the hours in question to decide on whether the extended hours are being used.

Behm said, "If there are only one or two people, it doesn't warrant keeping it open and in our experience, this has been the case. However, if it is highly used, we will certainly keep the library open."

Generally, there has been an increase in the number of students using the new library. Behm attributes the increase to the new space. "Students have more of an option now," she said. The placing of computers along the counters that run parallel with the stacks is expected to further increase library use.

TAKING SHAPE

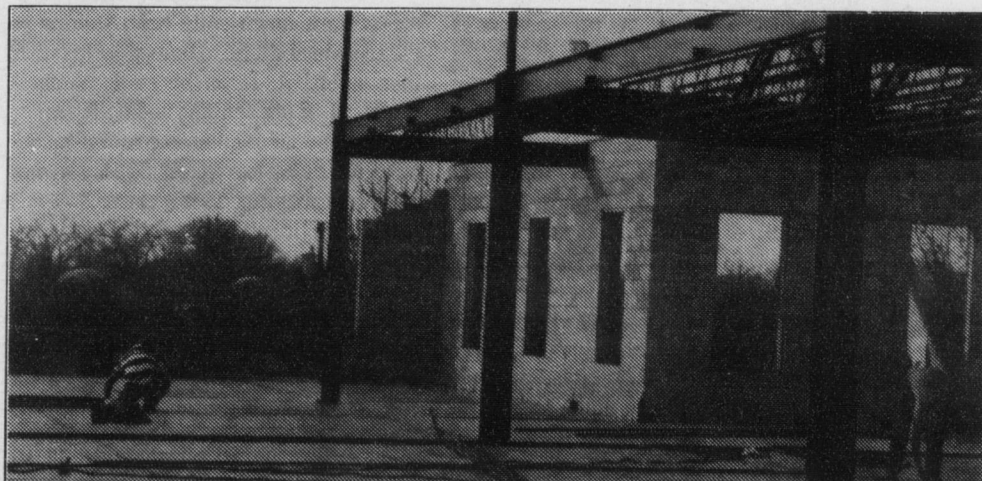


photo by Charles Almy

The second floor of the new telecommunications building. Installation of computer equipment is scheduled for April of this year.

INSIDE

Keg policy editorials 3

Life in Hell 8

Guilford sports moves up to NCAA 10