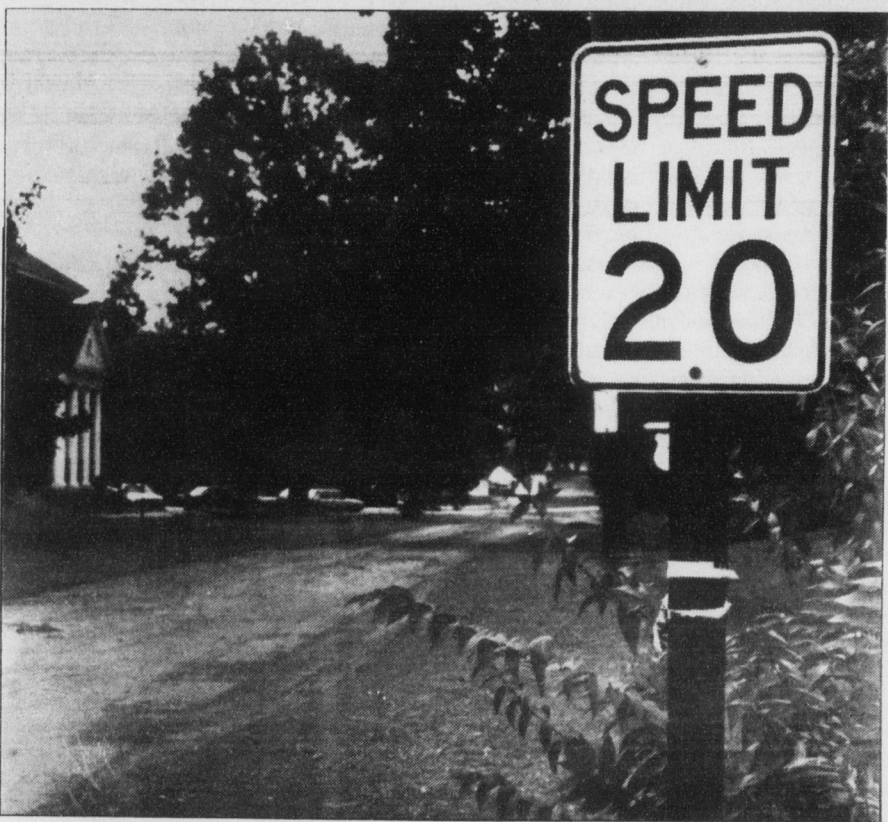
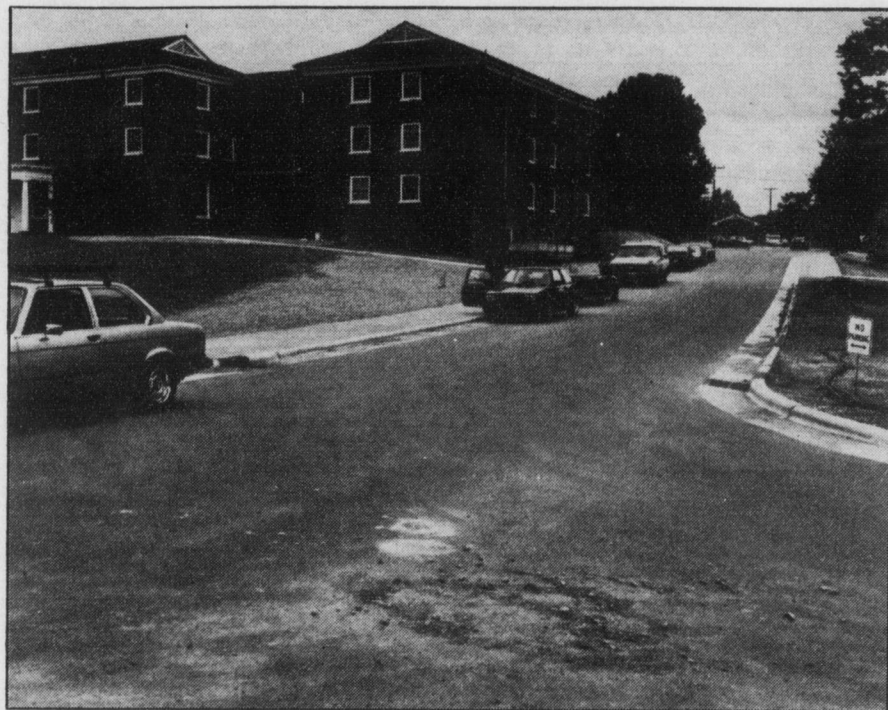


Ch-Ch-Ch-Ch-Changes . . .



Changes to the campus over the summer include the new road behind Bryan (upper left), the removal of the road between Binford and Bauman [even though the speed limit remains the same] (lower left), and the construction of the new on-campus apartment buildings behind Ragsdale House (upper right). As seen in the photo, some of the worries over removal of trees due to construction may have been exaggerated, though many were removed for the access road and parking lot.

Photos by Joan Malloch



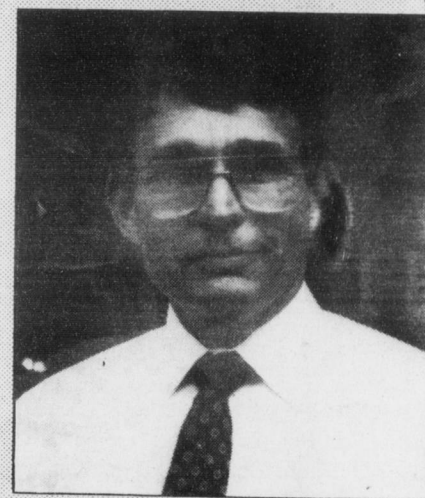
MFPEs improves campus life

Roger Nebel
staff writer

Many new or recently improved aspects of campus life are the result of projects operating under the re-organized Department of Maintenance, Facility Planning, Engineering, and Security. Changes include the new phone system, community service projects, and new roads and buildings.

The MFPEs was quietly formed last fall from previously existing but wholly separate departments; the Physical Plant, Landscaping and Grounds, Housekeeping, and the Security and Safety Division, were all integrated into the solitary MFPEs. Headed by Art Kopsak, this department has worked in conjunction with many other organizations on campus to accomplish the new things students will see and experience on campus this fall. The new halogen lights, new sidewalks, new whistle program and emergency phones, and construction of new roads and apartments all involve aspects of the MFPEs.

However, students' involvement with the department does not end at the beginning of classes. Students will interact with



Kopsak

representatives of the department year-round, through maintenance workers from the Physical, Plant Division, Security's Public Safety Officers and programs, and with the housekeepers in student residence halls. These very different divisions within the single MFPEs Department all work together with students to improve and maintain the quality of life in the Guilford community.