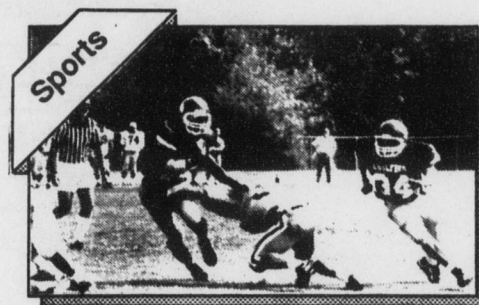


**New Cartoonist Debuts**

See page 7



**Quakers win against Methodist**

See page 9

# The GUILFORDIAN

Vol. 76, No. 2 Guilford College, Greensboro, N.C.

## New Provost grapples with 1991-92 budget shortfall

**Justin Cohen**  
*Assistant Editor-in-Chief*

Preliminary estimates indicate that Guilford College will be more than \$400,000 over budget for the 1991-92 academic year, announced new provost Dan Poteet at last Wednesday's faculty meeting.

Poteet stressed that the figures were "absolutely unscrubbed" and that the final calculation should be somewhat less "onerous." However, in light of last year's fiscal crunch, many in the Guilford community were obviously cringing at the prospect of enduring another round of belt-tightening measures.

Poteet himself assured the faculty that he would look for long-term solutions to the college's economic woes, and he indirectly criticized previous budgetary patchwork.

"It's high time to figure out what the fundamental problems are," said Poteet.

At the heart of this year's crisis in an extra \$500,000 spent on financial aid — the second consecutive year financial aid exceeded its allotment. Last year administrators had anticipated distributing financial aid awards to 45% of the incoming freshmen. However, 52% actually received some kind



photo by Seth Jurnak  
**Academic Dean Kathy Adams and newly hired colleague, Provost Dan Poteet, discuss campus responsibilities.**

of aid package.

Vice President for Student Development Nancy Cable-Wells emphasized Guilford's commitment to recruiting "special populations" in order to achieve a more representative student profile. Often the target groups tend to require more financial aid. For example, Cable-Wells pointed out that while blacks and Quakers encompass less than 20% of the student body, they receive roughly 34% of the financial aid awards. Dramatic financial aid reductions could undermine Guilford's focused recruiting efforts.

According to documents distributed by the Registrar's office, the

Financial Aid Task Force has "begun a thorough review of the packaging grid from 1990-91 and for '91-'92 with an eye toward containment measures in the aid award and negotiation process. A preliminary sense indicates that recruitment may need some re-thinking to prevent overspending of the aid budget, but these strategies could possibly affect the profile and the current mix of special populations."

In fact, financial aid packages have inflated across the board over the past two years, sparking complaints in various pockets of the community that Guilford was "buy-  
> continued to page 4

## Kaplan replaces Keith as Director of Internships

**Peter Smith**  
*Guest Writer*

In an effort to continue to provide students with internships and community service opportunities, Guilford College has moved Meg Kaplan into the position of Director of Internships and Service Learning, replacing Jim Keith who was fired last spring due to budget cuts.

Kaplan, who was the previous Director of the Career Development Center, received the position following an Administrative Council decision last spring to fill the void left by the removal of Keith.

Kaplan's new position will be effective during this 1991-92 academic year, but will be subject to review by Administrative Council in the spring of 1992. Keith's firing was a result of Guilford's need to cut \$2 million of requested expenditures to balance its budget. Keith was one of eight administrators whose jobs were terminated for this academic year.

"We are very appreciative that Meg Kaplan is willing to assume the responsibility as Director of Internships," said President Bill Rogers. "She has directed internships in the past and will provide a lot of professional connections to further expand the network of knowledge within the area of internships and service learning on campus."

Kaplan's office is located on the second floor of Founder's Hall in the Student Development Cen-

ter, across from the Career Development Library. Student Employment Services will also be located in Founders Hall, Room 206. Previously, both the Director's office and SES were located in the Worth House beside Dana Auditorium.

"I'm looking forward to a great year," said Kaplan. "With the move of Student Employment Services we are now a true career placement center. We are geared up for an early start and I'm confident we can continue to provide students with information on quality internships and service learning options."

Although Kaplan, who has a Master's Degree in Education, will essentially assume the same responsibilities as Keith, she will now be responsible for reporting to the Academic Dean and the Dean of Students.

Previously, the Director was responsible solely to the Dean of Students Nancy Cable-Wells; however, several members of the faculty were concerned that the position should be placed more under the control of the Academic Dean Kathy Adams due to the academic nature of many internships.

Kaplan's previous position as Director of the Career Development Library will be handled by Irene Harrington, a newly hired administrator from Bennett College. Harrington served as the Director of Career Services at Bennett, and she will work as an  
> continued to page 4