

This Week Student bashed

NEWS LINE

Recycling forum held

A recycling forum was held on Sept. 9 at 7:30 to discuss the new recycling effort with a panel of five: Jim Newlin (financial officer), Bill Scott (maintenance), Kristyn McGraw (recycling coordinator), Jen Hill (Senate president) and Ashley Emerson (Evergreen representative).

Because the effort is now restricted to aluminum cans, it was agreed by consensus that starting Oct. 4, interested students should take their glass, plastic and newspaper recyclables to Bauman at Noon on the 1st Sunday of each month. Because this will be independent of maintenance, volunteers will be needed to help sort, load and transport the materials.

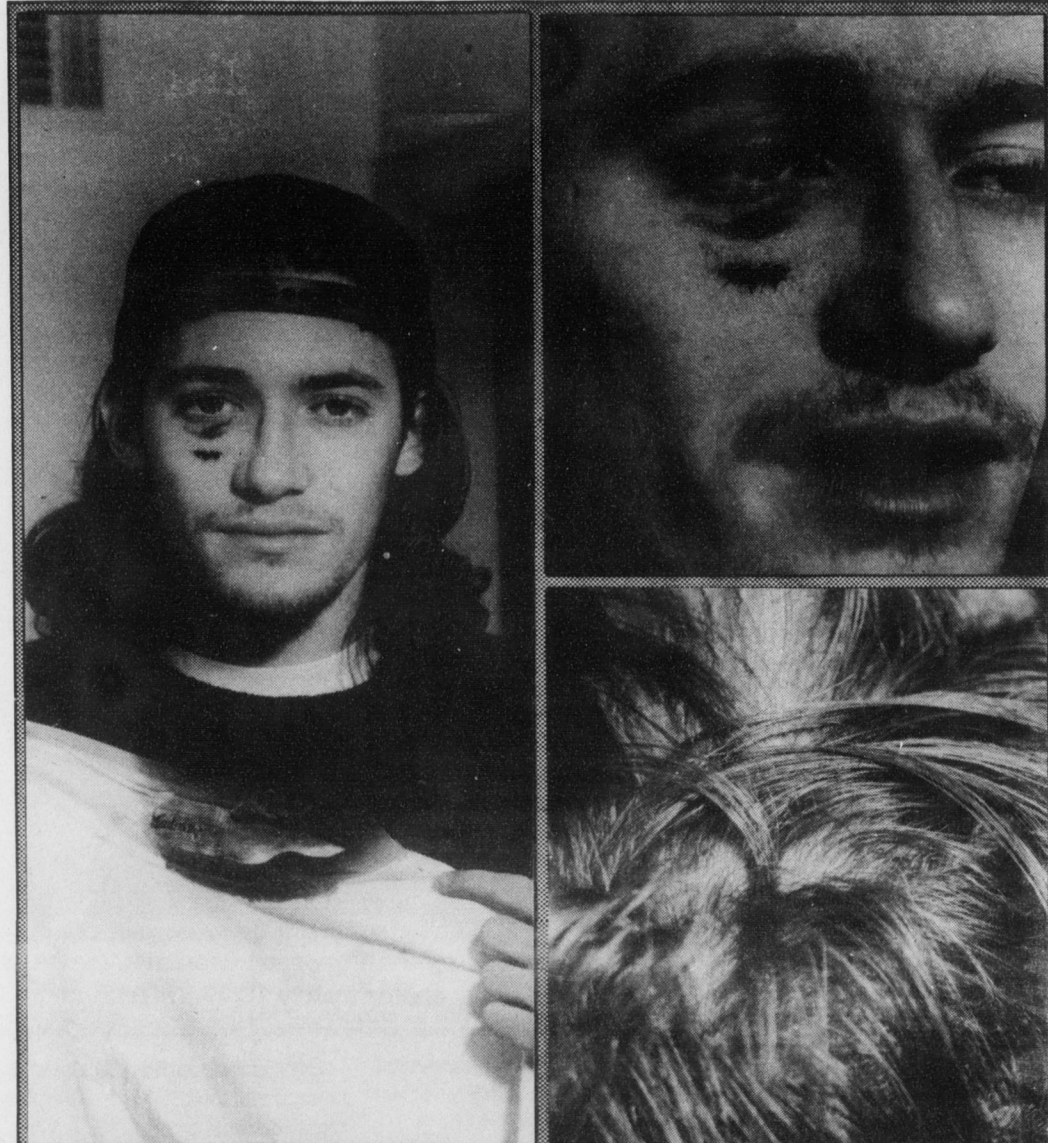
Board of Trustee committee meetings held

Several Trustee Board committees met Sept. 9 in preparation for the full Board meeting on Sept. 25. At that time, the Board will discuss recommendations made by the committees. Provost Poteet described Wednesday's meetings as "routine business."

Faculty discuss upcoming SACS evaluation

The monthly Guilford faculty meeting was held on Wednesday at 3:45. The main topic of discussion was the needed preparation for the upcoming assessment of the school by the Southern Association of Colleges and Schools.

SACS assesses institutional effectiveness and awards accreditation. The focus of the assessment has recently changed from the presence of resources (quality of professors and staff) to institutional effectiveness, in which goals must be set and achieved.



Jonathan White, a Guilfordian reporter, received approximately ten stitches after a recent Johnny Quest concert. White was reviewing the band for The Guilfordian, when he was punched in the head. His "review" will appear in our next issue.

Photos by Charles Almy

WEEK AT A GLANCE

All Week: Drama rehearsals-Stemberger

Mural w/Artist Edelson
Cntr. Pers Growth, Founders

Sunday, September 20

10:30-noon: Grief Process and Support Group-The Hut

Monday, September 21

Lunch/Dinner: Red Cross volunteer sign up-Founders Lobby
7:30-10:00pm: Movie, "Deadly Deception", about GE Boycott-Gallery
8:30-10:00pm: Humanity4Animals-Boren

Tuesday, September 22

Lunch/Dinner: Red Cross volunteer sign up-Founders Lobby
3:30-5:00pm: Resume Writing Workshop-Dana Lounge
7:30-9:00pm: Websterian Prelaw Society-Gallery
8:00-9:00pm: SDC-Dana Lounge
8:30-10:00pm: GLBA Meeting-203A
8:30-10:00pm: FCA Meeting-Boren
9:00-10:00pm: Steering Committee-Passion Pit

Wednesday, September 23

Lunch/Dinner: Union sign up for Celebration Station-Founders Lobby
1:00-6:00pm: CCE/SGA Bloodmobile
3:30-5:00pm: Resume Writing Workshop-Dana Lounge
3:30-5:30pm: Faculty Forums-Gallery
3:30-5:00pm: Senate Meetings-Boren
7:30-9:00pm: HOME-Dana Lounge
8:30-10:00pm: InterVarsity-Boren
9:00-10:00pm: Forevergreen-Gallery
9:00-10:00pm: Union Meeting-Pssn Pt

Thursday, September 24

9:00-6:00pm: Jewelry & clothing sale-Founders Lobby
7:30pm: Morris Rossabi on *The Mongols in World History* Gallery
8:00-10:00pm: ALAnon-UNCG, contact Doris Kimmel@ext.2174

Week at the Hut

Daily :8:15 - 8:30 am, unprogrammed worship.

Monday, September 21
pm 8:00 GCRO meeting
9:00 Seekers Session
Bible study on the Gospel of John

Wednesday, September 23
pm 5:30 Mid-week Meeting for Worship

Thursday, September 24
pm 7:30 Whittier / Whittier Seekers Session. Dick Morton on Walt Whitman
9:00 Quaker Concerns

Friday, September 25
am 11:30 Brown bag lunch discussion on the lessons of the Holocaust, led by Hara Glasser

Senator's Notebook

Senate Secretary Brian Sugioka

The 1992-93 Community Senate is taking shape and is ready to address its duties with vigor and dedication.

In addition to approving all of the student organization's budgets, the Senate puts together and discusses policies and rules to make the Guilford community a better place. Senate also hears special requests by students or groups seeking funds for school-related activities.

The Senate is a place where students and groups can come with any concern they have. Students or groups with a concern they want addressed should relay their concerns to a member of the Executive Council or the senator that represents them.

If the issue is seen as falling under Senate's jurisdiction, then it will be brought before Senate. If it is not, then the person or group with a concern will be put in touch with the person or group that can address

their concern.

There are a number of new ideas being implemented for this year. One change is the addition of a new committee called the Community Relations Committee. Chaired by R.J. Nickels and Brigitte VandeWalle, the committee will serve as a forum for communitywide problems such as racism, sexism, and homophobia within the Guilford community and will propose courses of action to deal with these problems.

Senate plans to improve communication between Senate and all members of the Guilford community. One strength of this year's Senate is many Executive Council members and committee chairs are involved with other student organizations such as the Democratic Student Coalition, Forevergreen, GLBA, the Guilfordian, Lacrosse, Rugby, and Women's Awareness. This enables Senators to better understand the purpose of these organizations and creates a network to

aid in Senate's mission to spread information and awareness.

Trustees have been asked to come to Senate meetings, and several have expressed interest. Their wisdom and input will be highly valued in Senate discussions. We also hope to make some compromises with trustees concerning some issues Senate and the Board of Trustees have been unable to agree on in the past.

This column will appear in this location in every issue to keep people up to date on the latest developments in Senate. In addition, it is hoped there will be pieces in the Guilfordian written this year by Senate members concerning issues before the Senate, as well as other issues confronting the Guilford Community.

Senate meets at 3:30 on Wednesdays in Boren Lounge. Any interested member of the Guilford Community is encouraged to attend.