

# The Guilfordian

Volume 78 Issue 11

Guilford College, Greensboro, N.C.

December 3, 1993

## NEWS LINE

### STUDENT WINS JERSEY LOTTERY

Sophomore Greg Montes was one digit away from having nine million reasons to be grateful this Thanksgiving.

Passed out at his family's Thanksgiving dinner with the stuffing and mashed potatoes were "Pick-6" Lottery tickets.

The ticket he received of computer-generated numbers was only one digit away from being a perfect match with the set drawn to win.

Instead, Montes won \$1700, five hundred of which will go toward Guilford tuition. The rest will fund a new stereo and a party on the first weekend of the spring semester in his Bryan Suite.

As well as giving money to Guilford athletics, Montes said he would have spent the nine million on "a bar in the Florida Keys and an off-campus house so we would have something to do on the weekends."

## Senate: Tomlinson named secretary after last meeting's hesitation

Gail Kasun  
News Editor

Senate approved the secretary nomination of Sophomore Wade Tomlinson Wednesday in a matter of seconds after President Joy Jansen asked for approval.

Tomlinson's approval came after a previously reluctant Senate decided to wait an extra meeting so that a larger showing of Senate was present, according to Jansen.

In addition, Senator Brian Sugioka asked at the initial meeting that the decision be put off until Wednesday's meeting at the request of the absent Senator Melissa Hoopes.

Sugioka's request sparked hesitation among other senators. Jansen said that Hoopes' concerns were "never addressed" prior to the meeting. However, according to Tomlinson, her reservations about his assuming the position had been



Photo by Erin Ackerman

Student protestors rally at Kreigsmann Furs, in hopes of discouraging business.

allayed by Jansen.

Tomlinson said that some had feared his other campus commitments would interfere with his new position.

Tomlinson has relinquished many positions and found replacements, he said.

"My main interest in the campus is improving communications," Tomlinson said of his new position.

## Religious Emphasis Week set

Ann Witt  
Staff writer

The Fourth Annual Religious Emphasis Week will be held Jan. 23-29. The event is sponsored by Guilford's Council of Religious Organizations (GCRO).

Max Carter, Guilford's campus minister and advisor to GCRO, was enthusiastic about the upcoming week: "We do a lot of ongoing religious programming on campus through GCRO, Campus Ministry, Friends Center, and campus religious groups such as Intervarsity Christian Fellowship, Hillel and Quaker Concerns.

"The idea of Religious Emphasis Week raises awareness of religious issues to another level and gives an opportunity to both raise the visibility of religious issues and to give groups on campus an opportunity to highlight their groups and to have speakers," Carter said.

Religious Emphasis Week was first held in January, 1991. "There

was a positive enough response to it to keep it going," Carter said. According to Carter, Guilford has since linked the week to the "distinguished Quaker visitor" Guilford brings to campus each year.

This year there will be two distinguished visitors. Paul and Margaret Lacey, a married couple, will be on campus for four days during the week. According to Carter, the couple heads an annual conference at Pendle Hill, a Quaker retreat center, on "sources of renewal for educators."

Paul Lacey is an English professor at Earlham College and a "nationally recognized expert on teaching excellence," said Carter. Lacey will speak on: "Sources of Renewal for Education." He will also work with faculty on support for teaching excellence.

Margaret Lacey is an author and poet. "She will read from her books and poetry and will work with students interested in feminist writers," Carter said. Both will be speaking at New Garden Friends

Meeting during the week.

Traditions from past Religious Emphasis Weeks are also being planned: "Our most successful Religious Emphasis Weeks have been when groups have showcased their programs and have brought in special speakers and sponsored forums and panels...we're going to do the tried-and-true things," Carter said.

One of the tried-and-true things has been the student faith panel held during Religious Emphasis Week. Students from religious groups such as Hillel, Intervarsity Christian Fellowship and Quaker Concerns, as well as those representing a variety of religious traditions, normally participate in the panel. A faith panel has been planned for the upcoming week.

"For those who are religious on campus there is a sense of gratitude that religious issues are given front-burner status...it is my feeling that Guilford students are comfortable talking about spiritual issues," Carter said.

## Two more editors leave Guilfordian: Time allotted greatest factor

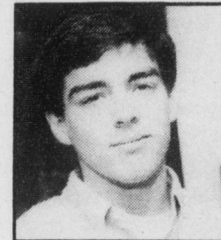
Christian Scanniello and  
Chris Hosford, staff writers

The Guilfordian is losing two members of its editorial board, Sports Editor Will Cooper and Photography Editor Eric Forman.

Cooper and Forman are two of six Guilfordian editorial board members to resign this semester, according to Editor-in-Chief Joan Malloch.

"Our continual loss of editors is largely due to the lack of a support system for leadership here at Guilford," said Malloch.

Resigning Sports Editor Will Cooper found the responsibilities of putting the section together, which included



Cooper

managing a staff of writers, designing layouts, and writing weekly articles, to be time consuming.

"It's almost too much to handle on top of your classes," said Cooper.

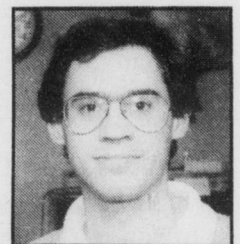
He plans, however, to continue working with the paper.

"I think I'll probably write the rest of my years at Guilford," said Cooper, a sophomore.

Eric Forman is unable to continue primarily due to academic considerations and the time constraints of being a senior.

Forman said, "I found that I was unable to satisfactorily balance the demands of The Guilfordian and my academics."

"I've enjoyed working with the paper immeasurably, but the requirements were too high for me. Especially being a graduating senior, I just do not have time to continue with the Photo Editor position."



Forman

Former Sports Editor and current copy editor Kiley Holder will replace Cooper. Photographer and staff writer Daphne Lewis and photographer Rob Davidson will replace Forman.