

# wqfs top 15

compiled by Kirstie Pendergast

Artist	Title
1. Gori Anus	Under the Sink
2. Breck	I'm A Loser, Please Kill Me!
3. Mari Ought	To Use Some Soap
4. F. and the C.C.'s	Freedom of What?
5. Kid Rock	Foul-Mouthed Youth
6. Juliana Ratfield	Like, A Virgin!
7. Porno for Gyros	Hot Beef Sandwich
8. Jessie and the Helmsmen	I'm Dreaming of a White Nation
9. Guilford Grounds Crew	Timber!!!
10. Depressed Mode	Violator (An Intruder Mix)
11. Amy and Joey	Cinderblocks and Steal Bars
12. Guillco. Security	In Your Room
13. Snoopy Dog Puppy	Where's My Soap on a Rope?
14. KMFDM	KMFDM Sucks
15. Hildebrant	The Scabies Stomp

## wqfs Managers elected

**General Manager:** Becky Browning  
**Programming Director:** Susan Mers  
**Music Directors:** Reid Dossinger, Alex Millkey, Kirstie Pendergrass  
**Promotions Manager:** Tajhia Whighorn  
**News Director:** J. Kelly Davis  
**Business Manager:** Eleanor McEntee  
**Productions Manager:** Stuart Jones

# SMOKER'S RIGHTS:

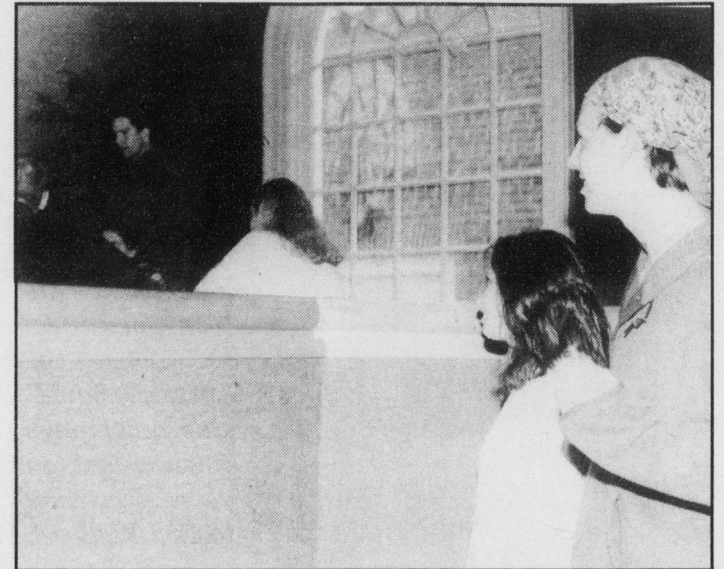
*Support helps 'em breath easy*

Lisa Davis  
Staff Chimney

People step off sidewalks to avoid them. Icy glares dart across the cafeteria if one crosses into the other section to refill a plate. They are forced to wait on the steps of campus buildings to partake of a personal daily ritual. These are just a few of the prejudices felt by smokers. Is this really Quakerly behavior, to participate in this treatment or allow it to occur? We must learn to be sensitive to smokers' needs, as they are a group which society is trying to squelch in the name of their own personal health. With taxes against them on the rise, they will soon become a dying breed. Some say trying to discourage smoking is also for the good of the smokers, but are we robbing them of their right to equal protection under the law?

Joe Cameletti has approached Jane Caris and Ernest McCoy to begin plans for structuring a support group for smokers who feel violated by the prejudice which runs rampant on campus. Students are rallying to begin a national operation to protect these fundamental rights. Smokers Against Petty Prejudice (SAPP) has come to Senate already asking for funds for a smoking awareness week. Funds would be allocated for activities such as a smoke-a-thon and free packs of cigarettes to all first-year students to be handed out at orientation.

Long-term goals of the group include talking with Residential Life to mandate living situations in which all nonsmoking students are required to live with a smoker



Nonsmokers send icy glares towards smokers in the cafeteria. Such prejudicial behavior occurs daily on campus. Why don't those no-good, non-smoking, health-freaks just leave us alone? You know, this is just like when my brother put me in a pillow case because he was playing Wild Kingdom and he needed a wild catch. Actually, that has nothing to do with smokers, but it just makes me mad, you know?

for a minimum of one semester. This idea would continue with the quest for diversity and tolerance of varying lifestyles on which Guilford prides itself.

Perhaps in making others aware of the joys of smoking and the necessity smokers feel it to be, prejudices which now exist will soon be erased from this campus. My hopes are that Senate will respond quickly and with much support to this group in need of recognition. Also, friends of smokers should form a support group as well, to understand and overcome the minor problems people face when becoming friends with a smoker. Guarding Against Smoker Preju-

dice (GASP) can help with questions such as "Should I light up in my nonsmoking friend's car?" or "How do I tell my parents that I smoke?" (for first-year students returning home for the first holiday).

These dilemmas plague smokers, and we need to come together to recognize the position we are putting these people in with our unfounded discrimination and to do something about it. For additional information about joining SAPP or GASP, contact Secretary Virginia Slimm. This is a cause Guilford should not ignore if we are to continue calling ourselves sensitive and aware human beings.

## The Goofordian

**Editor-in-Chief.....**Moan Phallic  
**Associate Editor.....**Karin' Growin'  
**Adviser.....**Peske Jeske  
**News Editor.....**Smell Possum  
**Perspectives Editor.....**Ash Sifton  
**Features Editor.....**Hall Lass  
**Sports Editor.....**Firey Smoulder  
**Copy Editing.....**Jack B. Nimbel  
**Layout.....**Iwanna B. A. Smurf  
**Circulation.....**Bobby B. Withered  
**Subscriptions.....**Pagan Slopkins  
**Advertising.....**Cryan S. Lame  
**Business.....**Rip Youaloff  
**Photography...I'd rather be at Davidson,**  
 .....Fluffme Dewus

## Editorial Policy

This is a spoof issue...  
 If you have the audacity to think that any of this newspaper staff would for a moment take responsibility for anything, you are sorely mistaken.  
 After all, we did print Lisa Davis...

## Submissives

The Guilfordian encourages submissive individuals interested in, well, whatever you think we might like. Send us a pretty picture.

Editor  
 P.O. Box 17717  
 Guilford College,  
 Greensboro, NC, 27410.

## Stiffs

Lisa Davis

Staff infections are given weekly in the Health center, Founders Hall, Monday evenings at 8 o'clock.  
 All are welcome. Bring something pus-filled and we'll lance it for you.