

## STAFF

Cory Birdwhistell • editor in chief  
 Mariah Sawyer • associate editor  
 Amy Broach • business manager  
 Keir Bickerstaffe • news editor  
 Susan Allen • features editor  
 Adam Lucas • editorials editor  
 Rob Mirchin • sports editor  
 Sara Johnson • photography editor  
 John Cocking • copy and online editor  
 Jeannie Dahlhauser • co-copy editor  
 Steve Marasco • advertising manager  
 Brad Hammett • subscriptions manager  
 Richard Dailey • circulation manager  
 Alice Reid • office manager  
 Jeff Jeske • advisor

Leigh King • Josh White • Betsy Blake • Damian DeBello  
 Christy Herbes • Jamie O'Sullivan • Jessica Wood  
 Michael Belan • Lauren Gill • Stacey Vincent • Jeff Johnson  
 Ben Thorne • Paige McRae • Caroline Wolfe • Jeff Hartz  
 Jocelyn Newsome • Tripp Oakley • Tim Forbes • Will Cooper  
 Olivia Braden • Sarah Weissberg

STAFF MEETINGS ARE MONDAYS AT 8 P.M. IN THE PASSION PIT

THE GUILFORDIAN  
 Box 17717, Guilford College, Greensboro, NC 27410  
 (910) 316-2306 • FAX (910) 316-2950  
 GUILFORDIAN@RASCAL.GUILFORD.EDU

## BEG YOUR PARDON

*The Guilfordian* seeks to correct all errors.  
 Please bring them to our attention by  
 contacting us via any or all of the above  
 communication methods.

## Greenlee wins first-year writing contest

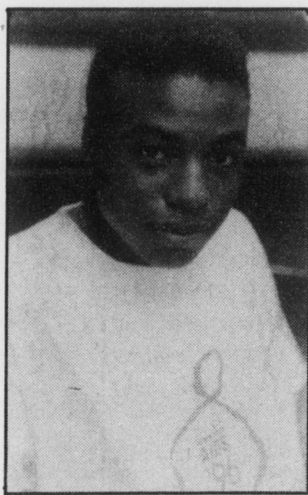
**BEN THORNE**  
 staff writer

Kurt Cobain spoke the truth when he said, "Teenage angst has paid off well." Taj Greenlee discovered this wisdom when he won the First-Year Writing Contest.

Awarded to the most outstanding piece of first-year writing, Greenlee's narrative essay "Water" was recognized last Tuesday, April 2, as the winner. Chosen from among roughly 20 entries, a panel of Guilford professors selected "Water" as deserving of the award.

The first piece Greenlee wrote after coming to Guilford, "Water" was originally a paper for his freshman English professor, Doug Smith. Smith thought highly of the essay, as did Rudy Behar, who reviewed it next. Both professors encouraged Greenlee to submit the essay to the contest, for which he extends his sincere gratitude.

"Water" is a different kind of writing from what Greenlee usually creates. "It's about all the angst in the relationship between



Taj Greenlee

fathers and sons. Also, it's about being truthful and authentic with your interactions with people," Greenlee explained.

With this early success, Greenlee is still unsure of whether or not he will pursue a career in writing. "I definitely would like to, but the actuality of that is still up in the air."

Nevertheless, Greenlee plans to pursue his love of writing at Guilford as an English major.

## New viewbook to show 'the real Guilford'

*A comprehensive search process and an original approach lead many to believe the new book will truly capture Guilford's spirit.*

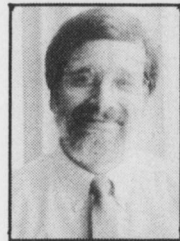
**KEIR BICKERSTAFFE**  
 news editor

After an extensive series of photo shoots held Wednesday, April 3, the production of a college viewbook aimed "to better represent the college," is one step closer to completion.

The photo shoots scattered all over campus last Wednesday were the culmination of a year-long project which had its roots planted some time ago.

"The staff [over the past few years] shared concerns that the admissions literature was not accurately portraying the richness of Guilford College," Dean of Admissions Al Newell said, "and the fact of the matter is we're dealing with a generation that gets more and more of its information visually. We needed a fresh look."

Heading up this "look" was an eight-person Viewbook Selection Committee, consisting of three students, a professor, and 4 staff members, including Newell. Their task



Al Newell

College Relations

was daunting—to find the company that could best capture the essence of Guilford. The group settled on Richard Harrison Bailey, the Agency, a firm out of South Bend, Indiana. According to Newell, they were a great blend of many assets.

"Their relatively small size along with how they function really impressed me, as well as being one of the most cost-effective firms. We met with the creative people that would be doing the book, which was the best thing we did. They had a great sense of capturing the distinctiveness of the college," Newell said.

RHB used a device known as a "circle of influence" to try to reach Guilford's distinctiveness. They had the admissions staff pick eight people from the student body whom represented a broad cross-section of the campus. These eight in turn each picked eight people around campus who "had influenced their decision to come to Guilford."

These circles of nine people met for two hours with a RHB representative, who recorded the discussions that followed. It was from these tapes that the firm gathered a large portion of the material to be put to use in the book. This, in effect, threw

any idea of school control over the project out the window.

"If we had just allowed [RHB] to talk to the original eight we picked, then there would be cause for concern. But allowing each of the eight to pick others... we couldn't have controlled the process if we tried," Newell said.

The publication of this viewbook, scheduled for completion during the summer, comes at a time when dropping student enrollment is a big concern.

"You do two things when you have literature that doesn't accurately represent the school," said Newell. "First, you attract students on inaccurate ideas, and secondly, you miss out on the students who if they knew what it was really like, would come. This should help us. Clearly articulating who we are should only be a positive thing"

The Viewbook Selection Committee as well as the Admissions staff are anxiously awaiting the finished product, but early indications are that there is a great satisfaction with the project.

"Guilford is a diverse community, and when you see all ranks of people agreeing, you know you have something," Newell said.

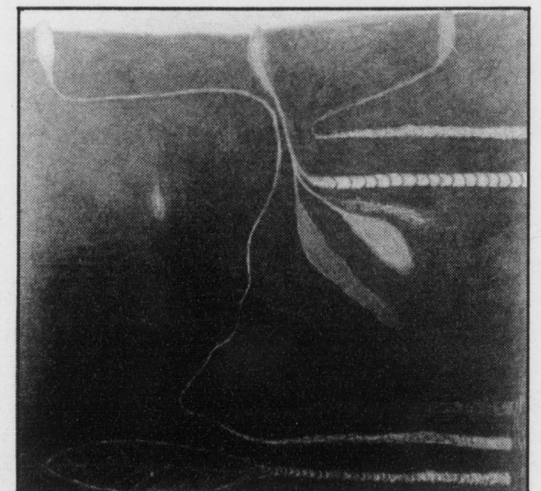
## Melton receives award

**TERRY HAMMOND**  
 contributing writer

Guilford College alumna Bonnie Melton was recently granted the Presidential Purchase Award for her painting, *Gardening in the South*, during the Alumni Art Exhibition and Exchange held on the Guilford College campus, March 22. The award was sponsored by Guilford College President Bill Rogers and the Exxon Foundation to honor an outstanding work in the exhibition by purchasing it for the college's permanent collection. The exhibition and award were juried by the college's art department faculty and art gallery director/curator. Melton's work was selected from nearly 100 entries included in the exhibition.

*Gardening in the South*, a five-foot square, oil-painting on wood, depicts sea-like forms, winding and pushing through warm, richly colored soil to a narrow band of airy blue at the top of the composition. With its surface bearing marks of the artist's palette knife and brush, this painting strengthens the school's holdings of modern painterly abstraction, and its addition to the collection bears witness to the achievements of Guilford College alumni.

Melton, a resident of Durham, NC, received her B.A. from Guilford College, and a Certificate from Pennsylvania Academy of Fine Arts. She has received numerous awards and fellowships including a Foundation Grant from the Pollock-Krasner Foundation, a North Carolina Arts Council Visual Artist Fellowship, and a residency at the Millay Colony for the Arts in Austerlitz,



Melton's *Gardening in the South*

NY. Her work has been shown at the North Carolina Museum of Art in Raleigh; the Southeastern Center for Contemporary Art, Winston-Salem; and solo exhibitions at the Raleigh Contemporary Gallery and the Durham Art Guild among others.

Melton's painting, along with the works of 48 other alumni artists, may be seen in the Alumni Art Exhibition, on display through May 31, in the Art Gallery located in Hege Library. For further information contact Theresa Hammond, director and curator of the Art Gallery, at (910) 316-2438.