

## The last time I checked: I was still sane

**BENJAMIN C. JOHNSON**  
staff writer/ Mall Santa

### An Off-White Christmas

(earlier title: *A Karl Marx Christmas* was dropped due to poor ratings from focus groups)

Blanket statement : Christmas (as we know it) would be Karl Marx' least favorite holiday.

It's bad enough that this holiday reportedly celebrates the birth of the founder of quite possibly the biggest "opiate" this planet has ever seen (Jesus Christ ; Christianity).

Christmas is bar none (I've always wanted to use that term) the most disturbing display of conspicuous consumption mankind has ever witnessed in a winter month.

And, this orgy of capitalism allows itself to be contained in the four weeks between Turkey Day and Xmas. Not even close.

I began to see holiday displays going up in department and grocery stores the first full week of November (November 8th . . . are you kidding me?).

Now, if you stretch the holiday season out to New Year's Day, that's close to two solid months of "Christmas" and Christmas-related paraphanelia.

That's one-sixth . . . seventeen percent . . . of the calendar year.

That's just wrong.

Who amongst my many readers (all right, three or four) buys candy for Halloween in late September or paints Easter eggs in mid February? I'm guessing not many of you.

Oh . . . but Christmas is an entirely differ-

ent beast.

Starting bright and early the Friday after Thanksgiving ("Black Friday"), the countless malls across this land open their doors to a seething horde of holiday shoppers.

You probably saw it on the news : harried soccer moms and grandmothers (and a father or three) forcing their way through the doors, trampling innocent employees and ignoring their screams, dashing to make a purchase or two or thirty, coming out hours, days later, eyes glazed, credit limits pushed, shopping bags full.

I'm not going to play this game this holiday season.

This is what I'm going to do for the next twelve days (not counting exams, of course); I suggest you do likewise if you wish to retain your sanity (or, at least, a good chunk of it) :

Buy the presents (this weekend will do . . . next week's fine) and wrap them (or have some

store employee wrap them), have a ham or turkey (or some vegetarian) Christmas dinner with your loved ones (or your family), go to midnight mass (if that's what you and yours do), wake up the next morning and open presents; and, finally, try to get the tree to the curb for pick up before the end of January.

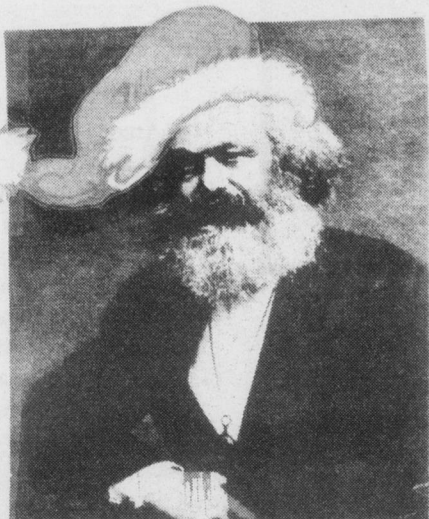
So . . .

From all of us to all of you :

Have a Merry / Happy

[insert your particular faith's December holiday here]

and a Happy New Year!



Marx was often confused with the Jolly old elf when he wore this stylish winter cap.

## My Noise by Rob Ullman

YESTERDAY SUCKED. I WOKE UP ALL EXCITED ABOUT THE NEW GLIDED BY VOICES DISC THAT WAS COMING OUT THAT DAY.



I WENT TO THE MUSIC STORE WITH NATHAN, BUT THEY DIDN'T HAVE MY RECORD. NOBODY DID. IT WAS EITHER "SOLD OUT" OR "NOT HERE YET" ALL OVER TOWN.



NEXT WE PLAYED SOME HOCKEY ON SUPER NINTENDO. NORDIQUES VS. PENGUINS, BEST OF SEVEN. I GOT CLOBBERED FOUR GAMES TO ONE. I GOT ABSOLUTELY HAMMERED.



THEN I HAD TO GO TO WORK.



# Annual Holiday Sale

## Get Free Stuff

- **Free! Champion Cap** (\$15.95 value) with the purchase of any Champion Sweatshirt
- **Free! Guilford College "Happy Holidays" Bear** with every clothing purchase of \$50.00 or more (while supplies last)
- **Free! Gift Wrap Kit** with the purchase of 3 Hallmark Cards

## Save Money

- All Guilford Embroidered Back Packs and Duffles **30% off**.
  - East Pack "Mini" Back Pack **50% off**
- All Polar Fleece items- **10% off** (including CRAZY hats & rolled blankets)
  - **20% off** all Jackets
- **15% off** all laser engraved wooden items
  - Word Perfect Suite CD-Rom **\$39.00**
  - **20% off** all Children's Clothing
- One-size-fits-all sleepshirts (reg. 13.95, 14.95) sale **25% off**
  - Many other **Unadvertised Specials!!**

## Make Money

Book Buy Back! Mon.- Wed. 9-7, Thur. 9-5

Guilford College Bookstore

Founders Hall • Holiday Hours: M-W 9-7, Th. 9-5

Call us at 316-2156 • E-mail us at: Bookstore@Rascal.Guilford.Edu

**The Guilfordian**  
Guilford College  
P.O. Box 17717  
5800 W. Friendly Ave.  
Greensboro, NC 27410

Non-profit Organization  
US Postage  
PAID  
Permit No. 57  
Greensboro, NC