

## Security Briefs

### Malicious damage:

October 27th, 4:40 p.m.

Student reports that upon returning to campus on October 21st, he discovered that someone had gone into his Bryan suite and rummaged through his belongings. While nothing was reported stolen, the student's headphones were broken. The student reports discovering his room door and window open when he had returned from Fall Break. A report was taken and the incident is currently under investigation.

### Petty larceny:

October 27th, 4:40 p.m.

Student reports that upon returning from Fall Break on October 25th, he discovered that a CD case containing approximately 50 compact discs was missing. The student reports that room door and window were found open upon his roommate's return from break. This incident happened in the same Bryan suite reported in the "malicious damage" mentioned above. A report was taken and incident is under investigation.

### Drive to endanger:

October 27th, 1:35 p.m.

While at Milner, a Security officer observed a student drive at a high rate of speed into the Milner lot via the sidewalk. Due to the obvious safety factors not taken into account by the driver, the case has been referred to the campus judicial process.

### Larceny of bicycle:

November 1st, 4:40 p.m.

Student reports that their bike was taken during some unknown time and date, possibly Fall Break. The black Cannondale was parked at the bike rack by Founders right before the break. A report was taken and the owner has filed an insurance claim. This incident is under investigation.

### Medical assistance:

October 29th, 12:45 a.m.

The Security control room operator received an emergency call originating from the Dana auditorium "blue light" phone requesting Security assistance behind Dana. A second emergency phone call was received requesting emergency medical assistance for an individual discovered behind Dana. Officers responded to find a former female student in a vehicle parked behind Dana in a disoriented and disheveled condition. EMS was contacted and the individual transported to Wesley Long hospital. A report was filed by Security on this medical assistance.

### Vandalism:

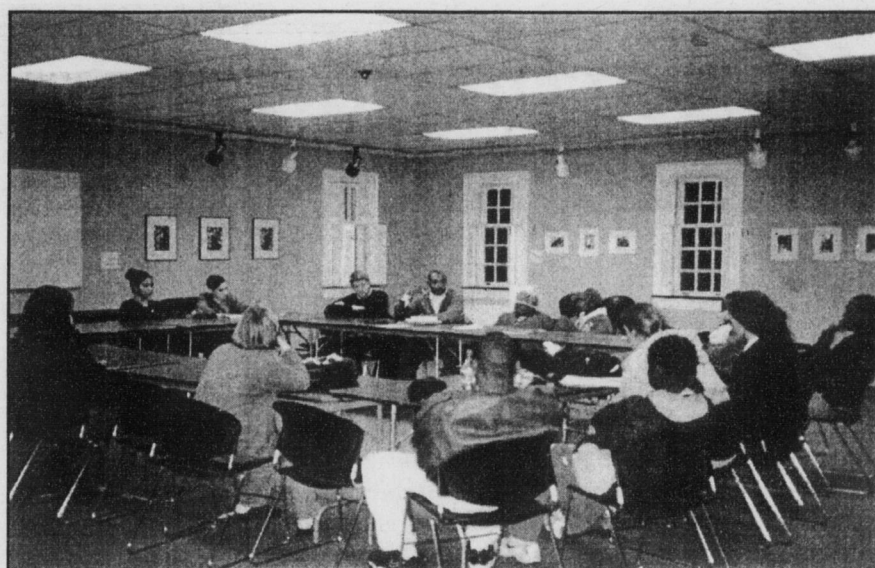
November 7th, 9:40 p.m.

Res Life staff reported the discovery of graffiti on the mirrors and walls of one of the north end hallways. A report has been taken and the case is under investigation.

### Vehicle fire:

November 11th, 4:16 p.m.

A student reported to security control that the YMCA bus behind Alumni Gym was on fire. Security officers arrived on scene to find the entire bus engulfed in flames. The fire department was contacted and within an hour the conflagration was extinguished. GPD also arrived on the scene. A preliminary investigation by the fire department indicates a faulty fuel intake as the cause of the problem. There were no injuries reported and a report was taken by Security. The case remains open pending further information from the fire department.



ERIN KLANK

Activism of student groups like AACS led to diversity training for students.

### Diversity, cont'd from page 1

The students who brought campus roles like CHAOS leaders, etc.

The point of the training, according to Dean of Student Life Mona Olds, is to "encourage participants to make a self-conscious attempt to evaluate their own perception of difference."

*"[The purpose is to] encourage participants to make a self-conscious attempt to evaluate their own perception of difference."*

—Mona Olds

The students who brought this idea forward are very diverse themselves and are responding to a perceived need in the college for this kind of training.

The end result would hopefully be a more thoughtful and

open environment here at Guilford.



## EARTH SKILLS WEEKEND

THE WEEKEND OF NOV. 13TH-15TH HAS BEEN MARKED FOR THE ARRIVAL OF EARTH SKILLS '98 AT GUILFORD COLLEGE. A VARIETY OF WORKSHOPS, WALKS, DRUMBEATS, AND DEMONSTRATIONS WILL INCLUDE MEDICINE MAKING, SANDAL MAKING, POETRY READING, YOGA, A COMMUNAL BONFIRE AND SWEAT LODGE, AND A CONCERT COURTESY OF THE REGGAE BAND TRUTH & RIGHTS.

THE WORKSHOPS ARE PRIMARILY PLANNED AND FACILITATED BY STUDENTS AND MAKE WAY FOR THE SHARING OF KNOWLEDGE WITHIN A LARGER COMMUNITY. THE EVENT IS FREE AND PROVIDES A TIME AND PLACE FOR HONORING SKILLS AND CELEBRATING THE LAND.

### FRIDAY

WELCOME CEREMONY 1 P.M., FOUNDERS LAWN  
T-P ASSEMBLY, HISTORY, USEFULNESS 2 P.M., LAKE  
HERBAL MEDICINE MAKING, 3 P.M., LAKE  
GATHER MATERIALS FOR SWEAT LODGE, 4 P.M., LAKE  
VEGAN/ VEG COOKING/ POTLUCK, 7 P.M., HILDEBRANDT  
REGGAE CONCERT, 10:30 P.M., COMMONS

### SATURDAY

YOGA, 9 A.M., LAKE (ALSO SUNDAY)  
SWEAT LODGE BUILDING, ALL DAY, MEADOWS  
RECYCLED ART PROJECT, ALL DAY  
POETRY READING, 10 A.M., PERMCULTURE GARDEN  
STRAW BALE OVEN BUILDING, 11 A.M., MEADOWS  
NATURE CRAFTS, OLD TIME BAND, NOON, FOUNDERS LAWN  
MODERN DANCE IMPROV, 1 P.M., LAKE  
PAPERMAKING, 1 P.M., LAKE  
PERMCULTURE FUNDAMENTALS, 3 P.M., PERM GARDEN  
CERAMICS, 4 P.M., HEGE-COX  
SHELTER BUILDING, 4 P.M., WOODS  
NIGHT WALK AND GAMES, 9 P.M., MEADOWS

### SUNDAY

YURT ASSEMBLY, 10 A.M., LAKE  
TREELIS BUILDING, 11 A.M., PERMCULTURE GARDEN  
BOOK BINDING, NOON, LAKE  
COOK IN COBB OVEN, 1 P.M., MEADOWS  
INTRO TO STRAW/ BALE, 1 P.M., MEADOWS  
RUBBER SANDAL MAKING, 2 P.M., LAKE  
CHANGING CAR OIL, 3 P.M., LAKE  
YOGA, 4 P.M., LAKE  
FIRE MAKING, 5 P.M., LAKE  
AFRICAN DRUM BONFIRE AND SLEEPOUT, 7 P.M., LAKE

## THE DEPARTMENT OF THEATRE STUDIES PRESENTS

# WHY WE HAVE A BODY

BY CLAIRE CHAFEE  
Directed by Ellen O' Brien

A dark-edged comedy  
that plays November 13-14  
and November 19-21.

FREE AT THE DOOR FOR GUILFORD COLLEGE STUDENTS  
AND FACULTY, OR RESERVE A SEAT FOR \$1.00 BY  
CALLING X2414.

CHECK OUT THE POSTERS AROUND CAMPUS.