



# THE GUILFORDIAN

Greensboro, NC

February 4, 2000

## Dorms "Programmed"

The Board of Trustees gathered last weekend and approved funding a new vision for Guilford College. The new plan will cost just over \$2.3 million dollars over five years and aims to raise the number of first-year students by 200.

Among the Trustees' decisions was the approval of the proposed tuition increase. The increase for next semester will be at a rate of 3.48% or \$740.

The tuition increase, however, is not unusually large. It is small in comparison to other local institutions such as Greensboro College, which will increase rates by 8.8% or \$900.

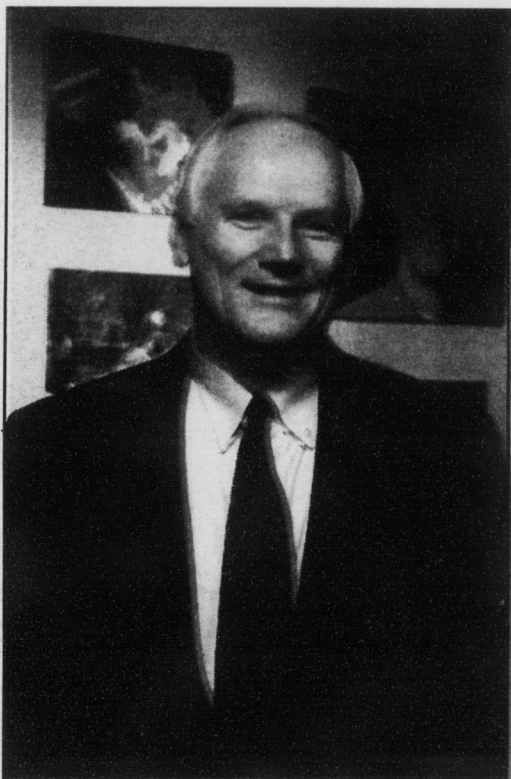
Bruce Stewart, chairman of the Board of Trustees, exhibited concern for the monetary strain affecting students saying, "We want to hold these raises as low as we can." Stewart also added he had three daughters who have gone through college and he knows the strain that college can have on a family.

The increase is to maintain and improve the faculty. "We want to keep our first-rate faculty, and want to compensate them as well as we can," said Stewart.

The Board also allocated funding through bond issues (which do not come out of tuition) for renovating academic buildings and residence halls, including money to relocate the science departments to

## Trustees raise tuition, approve plan

By Chris Brown  
STAFF WRITER



Bruce Stewart chairs the Board of Trustees.

**Bruce Stewart, chairman of the Board of Trustees, understands the strain college expenses can put on a family. Yet he believes the rise will "keep our first-rate faculty..."**

Over the weekend, McNemar received an unsigned letter severely criticizing the administration and threatening to disrupt the admissions drive. The letter, which calls McNemar "The Great Satan" and claims the Dean of Student Life is paid for "subduing students," was shown to the Board of Trustees.

Stewart expressed concern over student disenchantment with the school, but added that change is fundamental in maintaining Guilford. "Our values are the same, but how we live them out has changed over time." He also expressed a willingness to sit down and talk to students who have is-

Please see *Trustees*, page 5

## Guilford's future planned

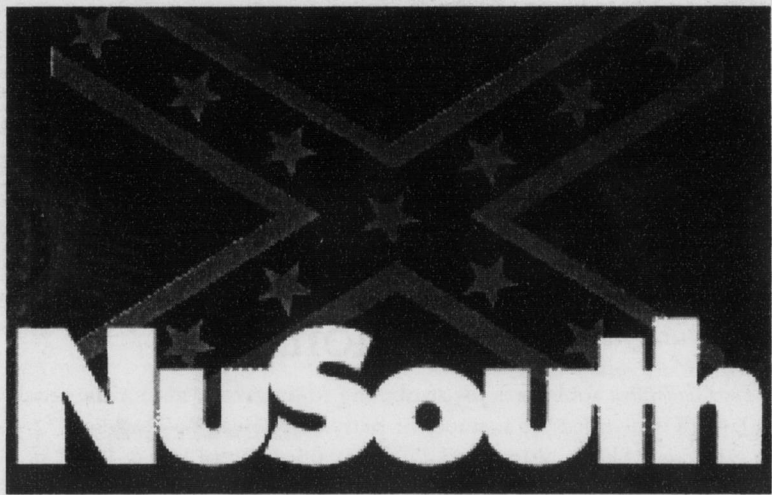
By Peter Morsheck  
STAFF WRITER

Welcome to Guilford of 2004: a place where 1,600 students roam rather than the current 1,266. Where concentrations and "pathways" in myriad new subjects give students a competitive edge in the marketplace. Where Binford is an all-first-year dorm with residential programs run by a paid staff. Where Avanti is compulsory, an integral part of the college experience. And where the Management, Sports Studies, JPS, and Ed. Stud-

ies departments have grown under careful nourishment and funding.

All this and more is outlined in the new "Vision and Strategy for Guilford College," the mammoth 26-page document which summarizes Guilford's strategic plan for the next five years. Unveiled on January 18th after months of research and preparation, the last few weeks have constituted a media blitz as top administrators have presented the document to students, faculty, and the Board of Trustees.

Please see *Future*, page 2



WWW.NUSOUTH.COM

Logo of the NuSouth flag. "The NuSouth symbol is the unification of opposites...[it] forces us to look at what makes us uncomfortable." See page 4 for a story on the Confederate Flag and its role on campus.

The Guilfordian  
c/o Student Activities  
5800 W. Friendly Ave.  
Greensboro, NC 27410

