

THE GUILFORDIAN

Greensboro, NC

April 13, 2001

Proposed FedEx hub debated on Wednesday night

Daniel Fleishman
NEWS EDITOR

At a FedEx forum sponsored and moderated by the editorial staff of *The Guilfordian*, two sides stacked with highly qualified representatives debated the proposed hub and the myriad effects it would have on the local community.

A passionately opinionated crowd of about 200 filled the New Garden Friends Meeting, applauding often and with a hearty enthusiasm. The audience contained a fairly even representation of opponents and proponents of the issue, differing from the one hosted by the Greensboro Jaycees last month, which was filled predominantly with those against it.

The pre-arranged format, strictly adhered to, allowed each side 25 minutes to present their main arguments and 10 minutes to rebut, and concluded with about 40 minutes of questions from the audience.

The two sides made many of the same arguments that have been disputed since the hub was proposed exactly three years ago today.

The opponents warned of the prospects of unbearable amounts of noise pollution, occurring most predominantly from midnight to 2 a.m., and from 4 a.m. to 6 a.m.

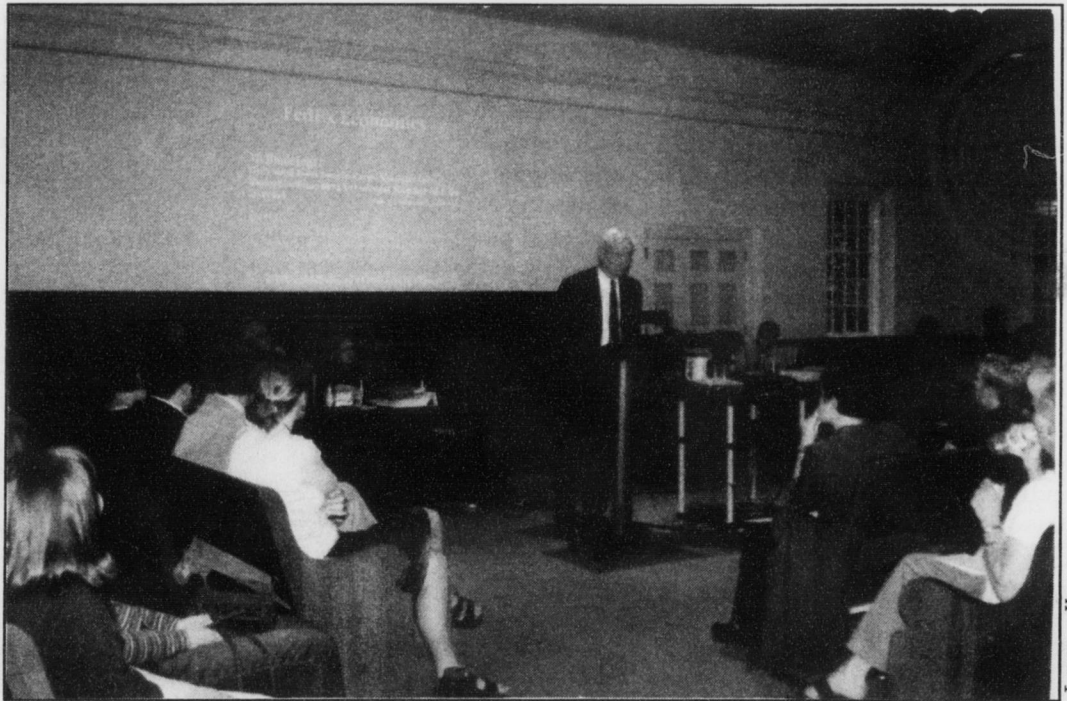
The proponents of the hub, represented by the Greensboro Area Chamber of Commerce, focused on the number of new full- and part-time jobs, replete with employee benefits, that would be created.

Don Kirkman, president of Piedmont Triad Partnership, which solicits corporate influx

to the area, gave most of the pro-hub presentation. He answered the opponents' noise pollution concern by maintaining that 90 percent of FedEx flights would pass over the area southwest of the airport, "predominantly an industrial area with relatively few residents."

The opponents, led by Mark Warren, executive director of Alliance for Legal Action, focused their arguments on the noise pollution and the monetary cost to the

Please see *FedEx Forum*, page 3.



Mark Warren, executive director of the Alliance for Legal Action, presents arguments against the installation of a FedEx hub at the airport. The forum was held on Wednesday night.

LEAH KEFALOS

Tribute to a friend: Will Link (1976 - 2001)

Dan Gatti
GUEST WRITER

My friend Will died in a car crash on Monday. The experience of losing a friend is crushing in many ways, but perhaps the worst is the way that your memories go from fond treasures to suffocating prisons. As you lie in bed at three in the morning, wanting nothing but sleep, one thought after another floats through your head, each carrying the sinking knowledge that there are no memories to come. And you are left with a

sense of total futility, that there is nothing to do for your friend, that there is nothing to do with your emotional angst. And it is for that reason that I write this tribute to him, to be able to do something with these feelings and memories. Thank you to those who read this, for participating in this process, both of Will's memory and of my catharsis.

I first met Will my freshman year, and from the very beginning it was clear that he was

Please see *Will*, page 3.



Will Link, who graduated from Guilford College last spring with a B.S. in Justice and Policy Studies, died in a Thomasville car accident last week on the way to a job interview. He was 24. A memorial service was held yesterday.

