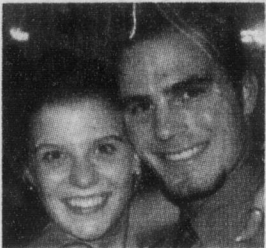


In This Issue...



Page 2

How the changes to the formal affected the fun...



Page 7

George Guo brings new expertise to the Political Science Department...



Page 8

Looking back at the Greensboro Massacre that took place in 1979...

The Truth About Sexual Assault

Mary Layton Atkinson
Staff Writer

Catherine Hansen delivered a program entitled *Sexual Assault: Myth and Facts* on Tuesday evening in the gallery.

Hansen is a registered nurse and forensic nurse examiner (FNE) as well as the program coordinator for SANE (Sexual Assault Nurse Examiners), which operates emergency facilities with specialized equipment for the collection of evidence in sexual assault cases at both Wesley Long Memorial Hospital and Moses Cone Hospital.

The program was specifically

tailored to educate college-aged women about the hard facts of rape and sexual assault and the process for reporting a rape and collecting evidence. Part of the program was devoted to dispelling myths about rape.

"It is a myth that women who wear seductive clothing are 'asking for it,'" said Hansen. "Most of us acknowledge that and yet I have heard so many women come into the ER and say 'maybe I shouldn't have worn those leather pants, maybe I shouldn't have worn that skirt'...but the truth is that most rapes are committed by someone

the victim knows, not a stranger looking for a girl with a pony-tail."

If a woman is raped or sexually assaulted and wishes to file charges against the perpetrator, there are a number of steps she should take.

First, the victim should not shower, bathe, change clothes, eat, drink, smoke or use the bathroom prior to being examined as these activities could damage evidence.

"Unfortunately, your body is a crime scene in these cases," said Hansen. "DNA evidence that could be collected from swabbing the inside of the mouth, for example, is easily broken down by smoking or drinking."

The victim should seek treatment at a hospital within 72 hours, prior to the breakdown of DNA evidence.

"Don't avoid seeking medical care because of cost," said Hansen. "All patients will be seen regardless of their ability to pay or insurance at Moses Cone."

Once you are at the hospital a rape crisis advocate will be called immediately to provide you with emotional support, and an FNE will be called in to perform an evidentiary exam and administer emergency prophylactics. You will then be given resources for follow-up care and counseling.



Hansen talks about the facts and myths of sexual assault.

Sarah Sherman

You must give consent for evidence to be collected. If you do give consent, the FNE must call the police and you will be required to give a statement. This does not, however, mean that you must press charges against the perpetrator.

"We will encourage you to press charges, but even just filing a report means that if the perpetrator victimizes another

continued on page 3...

Statistics:

- In 83% of cases of violence against women, the woman is under the age of 25.
- 77% of completed rapes (where vaginal penetration occurs) are by someone the victim knows.
- One in six women will be the victim of an attempted or completed rape in their lifetime. In the U.S., a rape is reported every five minutes.
- In Greensboro, 2.8% of college women have experienced a completed or attempted rape during their college experience.
- 60% of sexual victimizations on college campuses take place in the victim's residence.
- 51% of rapes on college campuses happen between midnight and six a.m.

The odds of college students being sexually assaulted increase exponentially if they:

1. Frequently drink enough to get drunk
2. Are unmarried
3. Have been a victim of sexual assault in the past
4. Live on campus

Contacts:

- Greensboro Rape Crisis Line: (336) 273-7273
- Cathy.Hansen@mosescone.com

Career Fair Info Day

Tuesday, November 19th 12:30-4:00 P.M.
Location: Greensboro Marriott, Downtown
304 North Greene Street (336) 379-8000
Don't Have A Ride? Call x 2187 about alternative transportation.
Visit www.ncccjobfair.org for more information.

Please Recycle