

# THE GUILFORDIAN

GREENSBORO, NC

VOLUME 90, ISSUE 1

AUGUST 21, 2003

WWW.GUILFORDIAN.COM

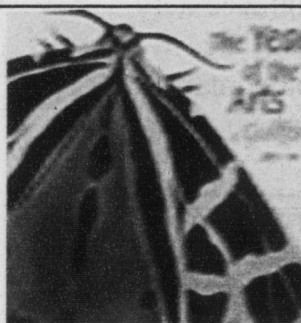
## SPECIAL EDITION

### In This Issue...



Page 4

See what's happening in Greensboro...



Page 7

The year of the arts kicks off at Guilford...



Page 8

Fall sports preview...

## Welcome, Class of 2007

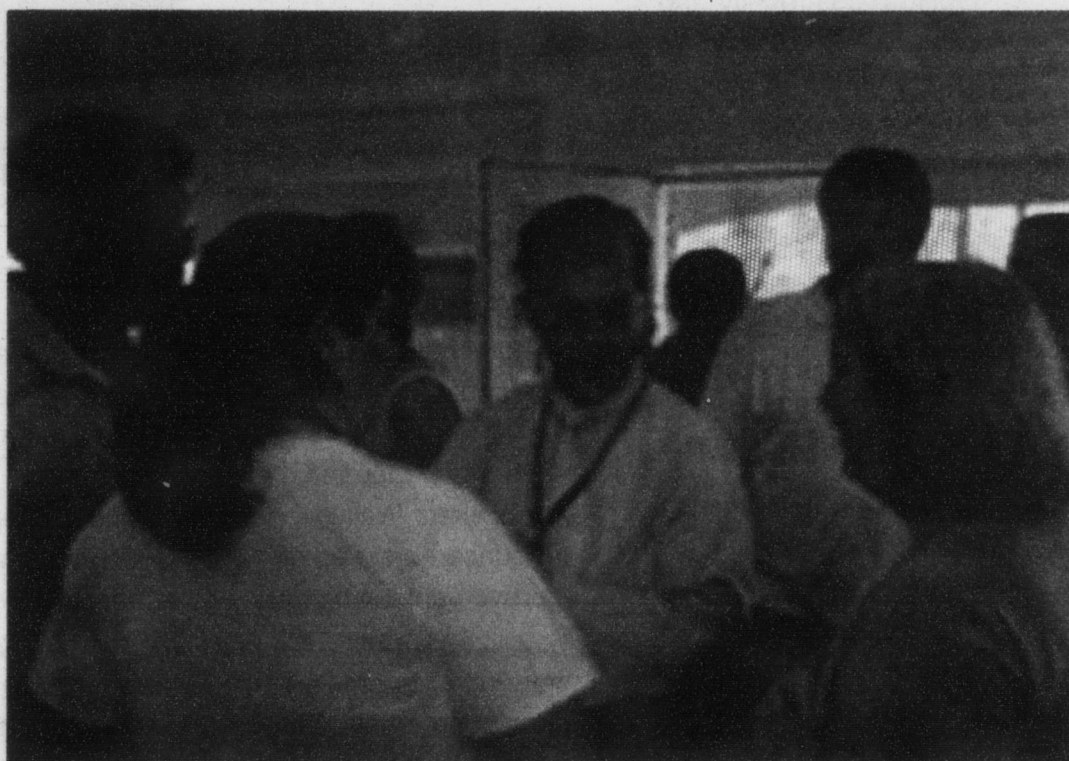
Katie Elliott  
and  
Hannah Winkler

Guilford hasn't been so popular since 1965.

This year Guilford College beat its previous enrollment record, set over three decades ago. In 1965, enrollment peaked at 1,862. This year, the student body numbers 2,125. The 303 first years helped.

"We've only had five consecutive years of 300 or more once before, and we're on our fourth year now," said Randy Doss, Vice President for Enrollment and Campus Life. "Obviously our goal is to have 300 every year."

Simultaneously, however, Guilford has raised its standards. Acceptance rates have dropped 12% in the last two years, meaning it is increasingly harder to get into Guilford.



President Kent Chabotar welcomes first-years at a Ragsdale House reception. Mary Layton Atkinson

Grade-point averages of first-years have improved. This year, the average high school GPA was 3.05, compared to last year's 2.97. Average ACT and SAT scores have also increased.

Doss was equally impressed by the students. "I've met many of them and I am encour-

aged by their enthusiasm and their willingness to get involved in Avanti and CHAOS programs," he said. "They seem like a very energetic bunch."

This year's CHAOS (Community, Health, Advisement, Orientation, Services) program featured standards such as a hypno-

tist and Playfair, as well as new events like diversity training and a "Pirates of the Caribbean"-themed night.

For first-year Noah Forman, however, "the best part of CHAOS was the non-organized events—just meeting people and playing foosball."

Continued on pg 6